



SZABO SCANDIC

Part of Europa Biosite

Produktinformation



Forschungsprodukte & Biochemikalien



Zellkultur & Verbrauchsmaterial



Diagnostik & molekulare Diagnostik



Laborgeräte & Service

Weitere Information auf den folgenden Seiten!
See the following pages for more information!



Lieferung & Zahlungsart

siehe unsere [Liefer- und Versandbedingungen](#)

Zuschläge

- Mindermengenzuschlag
- Trockeneiszuschlag
- Gefahrgutzuschlag
- Expressversand

SZABO-SCANDIC HandelsgmbH

Quellenstraße 110, A-1100 Wien

T. +43(0)1 489 3961-0

F. +43(0)1 489 3961-7

mail@szabo-scandic.com

www.szabo-scandic.com

[linkedin.com/company/szaboscandic](https://www.linkedin.com/company/szaboscandic) 

Dopamine Transporter antibody

Cat. No. GTX04527

Host	Rabbit
Clonality	Polyclonal
Isotype	IgG
Application	WB, ICC/IF, FACS
Reactivity	Mouse, Rat

Package
50 µl

APPLICATION

Application Note

*Optimal dilutions/concentrations should be determined by the researcher.

Suggested dilution	Recommended dilution
WB	Assay dependent
ICC/IF	Assay dependent
FACS	Assay dependent

Not tested in other applications.

Calculated MW 69 kDa. ([Note](#))

PROPERTIES

Form	Liquid
Buffer	PBS pH 7.4, 1% BSA
Preservative	0.05% Sodium Azide
Storage	Store as concentrated solution. Centrifuge briefly prior to opening vial. For short-term storage (1-2 weeks), store at 4°C. For long-term storage, aliquot and store at -20°C or below. Avoid multiple freeze-thaw cycles.
Concentration	0.8 mg/ml (Please refer to the vial label for the specific concentration.)
Immunogen	Peptide (C)DAHASNSSDGLGLND, corresponding to amino acids residues 191-205 of rat DAT (Accession P23977) 2nd extracellular loop.
Purification	Purified by antigen-affinity chromatography
Conjugation	Unconjugated

Note

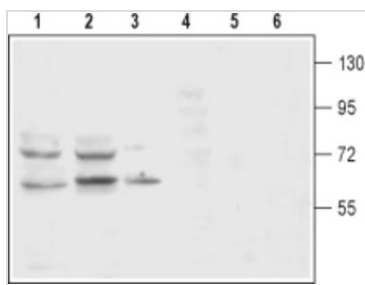
For laboratory research use only. Not for any clinical, therapeutic, or diagnostic use in humans or animals. Not for animal or human consumption.

Purchasers shall not, and agree not to enable third parties to, analyze, copy, reverse engineer or otherwise attempt to determine the structure or sequence of the product.



For full product information, images and publications, please visit our [website](#).

DATA IMAGES

**GTX04527 WB Image**

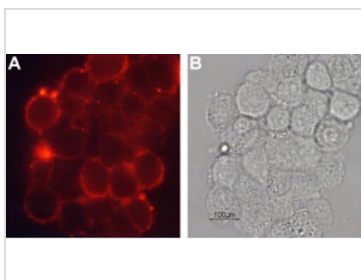
WB analysis of various lysates using GTX04527 Dopamine Transporter antibody prior incubated with (Lane 4-6) or without (Lane 1-3) blocking peptide.

Lane 1 and 4 : Rat brain membrane tissue lysate

Lane 2 and 5 : Mouse brain membrane tissue lysate

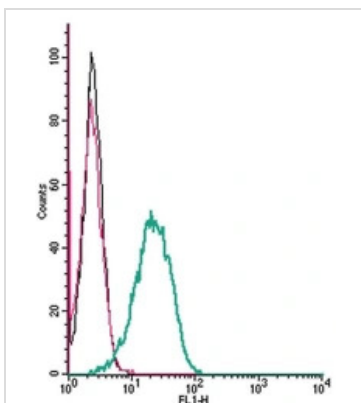
Lane 3 and 6 : PC-12 whole cell lysate

Dilution : 1:200

**GTX04527 ICC/IF Image**

ICC/IF analysis of PC-12 cells using GTX04527 Dopamine transporter antibody.

Dilution : 1:100

**GTX04527 FACS Image**

FACS analysis of J774 cells using GTX04527 Dopamine transporter antibody.

Green : Primary antibody

Red : Secondary antibody only

Black : Unlabeled cells

Dilution : 2.5 μ g



For full product information, images and publications, please visit our [website](#).