



# SZABO SCANDIC

Part of Europa Biosite

## Produktinformation



Forschungsprodukte & Biochemikalien



Zellkultur & Verbrauchsmaterial



Diagnostik & molekulare Diagnostik



Laborgeräte & Service

Weitere Information auf den folgenden Seiten!  
See the following pages for more information!



### Lieferung & Zahlungsart

siehe unsere [Liefer- und Versandbedingungen](#)

### Zuschläge

- Mindermengenzuschlag
- Trockeneiszuschlag
- Gefahrgutzuschlag
- Expressversand

### SZABO-SCANDIC HandelsgmbH

Quellenstraße 110, A-1100 Wien

T. +43(0)1 489 3961-0

F. +43(0)1 489 3961-7

[mail@szabo-scandic.com](mailto:mail@szabo-scandic.com)

[www.szabo-scandic.com](http://www.szabo-scandic.com)

[linkedin.com/company/szaboscandic](https://www.linkedin.com/company/szaboscandic) 

## FAM38A antibody

Cat. No. GTX04534

Host	Rabbit
Clonality	Polyclonal
Isotype	IgG
Application	WB, ICC/IF, IHC-P
Reactivity	Human, Mouse, Rat

Package  
100 µl

## APPLICATION

## Application Note

\*Optimal dilutions/concentrations should be determined by the researcher.

Suggested dilution	Recommended dilution
WB	1:500-1:2000
ICC/IF	1:100-500
IHC-P	1:50-1:200

Not tested in other applications.

Calculated MW 287 kDa. ([Note](#))

## PROPERTIES

Form	Liquid
Buffer	PBS, 150mM NaCl, 50% Glycerol
Preservative	0.02% sodium azide
Storage	Store as concentrated solution. Centrifuge briefly prior to opening vial. For short-term storage (1-2 weeks), store at 4°C. For long-term storage, aliquot and store at -20°C or below. Avoid multiple freeze-thaw cycles.
Concentration	1 mg/ml (Please refer to the vial label for the specific concentration.)
Immunogen	A synthesized peptide derived from human PIEZO1(Accession Q92508), corresponding to amino acid residues I642-L692.
Purification	Purified by antigen-affinity chromatography From serum
Conjugation	Unconjugated

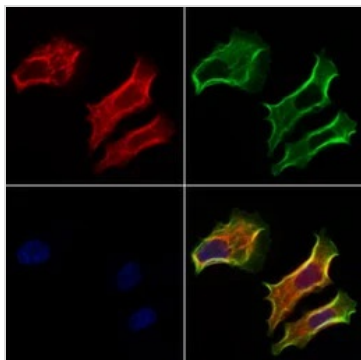
**Note** For laboratory research use only. Not for any clinical, therapeutic, or diagnostic use in humans or animals. Not for animal or human consumption.

Purchasers shall not, and agree not to enable third parties to, analyze, copy, reverse engineer or otherwise attempt to determine the structure or sequence of the product.



For full product information, images and publications, please visit our [website](#).

## DATA IMAGES

**GTX04534 ICC/IF Image**

ICC/IF analysis of PFA-fixed HeLa cells using GTX04534 FAM38A antibody.

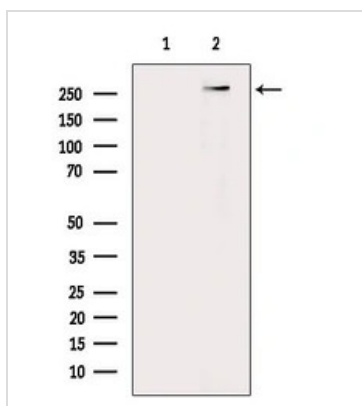
Red : Primary antibody

Green : beta Tubulin

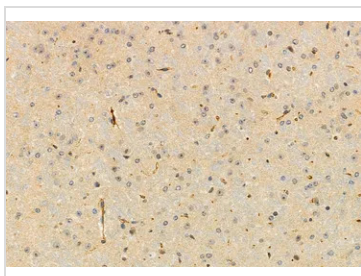
Blue : DAPI

Permeabilization : 0.1% Triton X-100

Dilution : 1:200

**GTX04534 WB Image**

WB analysis of mouse spleen tissue lysates using GTX04534 FAM38A antibody. The lane on the left was treated with blocking peptide.

**GTX04534 IHC-P Image**

IHC-P analysis of mouse brain tissue using GTX04534 FAM38A antibody.

Antigen retrieval : Heat mediated citrate buffer

Dilution : 1:100

**GTX04534 IHC-P Image**

IHC-P analysis of rat brain tissue using GTX04534 FAM38A antibody.

Antigen retrieval : Heat mediated citrate buffer

Dilution : 1:100



For full product information, images and publications, please visit our [website](#).