



SZABO SCANDIC

Part of Europa Biosite

Produktinformation



Forschungsprodukte & Biochemikalien



Zellkultur & Verbrauchsmaterial



Diagnostik & molekulare Diagnostik



Laborgeräte & Service

Weitere Information auf den folgenden Seiten!
See the following pages for more information!



Lieferung & Zahlungsart

siehe unsere [Liefer- und Versandbedingungen](#)

Zuschläge

- Mindermengenzuschlag
- Trockeneiszuschlag
- Gefahrgutzuschlag
- Expressversand

SZABO-SCANDIC HandelsgmbH

Quellenstraße 110, A-1100 Wien

T. +43(0)1 489 3961-0

F. +43(0)1 489 3961-7

mail@szabo-scandic.com

www.szabo-scandic.com

[linkedin.com/company/szaboscandic](https://www.linkedin.com/company/szaboscandic)

FAM38A antibody

Cat. No. GTX04535

Host	Rabbit
Clonality	Polyclonal
Isotype	IgG
Application	WB, ICC/IF, IHC-Fr, FACS, LCI
Reactivity	Mouse, Rat

Package
50 µl

APPLICATION

Application Note

*Optimal dilutions/concentrations should be determined by the researcher.

Suggested dilution	Recommended dilution
WB	Assay dependent
ICC/IF	Assay dependent
IHC-Fr	Assay dependent
FACS	Assay dependent
LCI	Assay dependent

Not tested in other applications.

Calculated MW 287 kDa. ([Note](#))

Product Note Not recommended for use with human samples.

PROPERTIES

Form	Liquid
Buffer	PBS pH 7.4, 1% BSA
Preservative	0.05% Sodium Azide
Storage	Store as concentrated solution. Centrifuge briefly prior to opening vial. For short-term storage (1-2 weeks), store at 4°C. For long-term storage, aliquot and store at -20°C or below. Avoid multiple freeze-thaw cycles.
Concentration	0.85 mg/ml (Please refer to the vial label for the specific concentration.)
Immunogen	Peptide (C)EDLKPQHRRHISIR, corresponding to amino acid residues 1863-1876 of rat extracellular Piezo1 (Accession Q0KL00).
Purification	Purified by antigen-affinity chromatography
Conjugation	Unconjugated



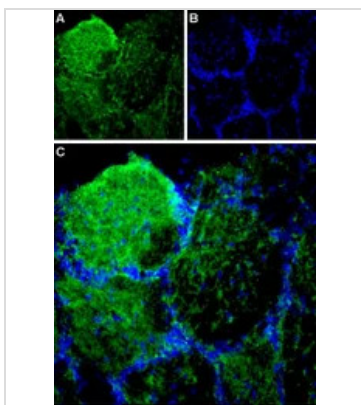
For full product information, images and publications, please visit our [website](#).

For laboratory research use only. Not for any clinical, therapeutic, or diagnostic use in humans or animals. Not for animal or human consumption.

Note

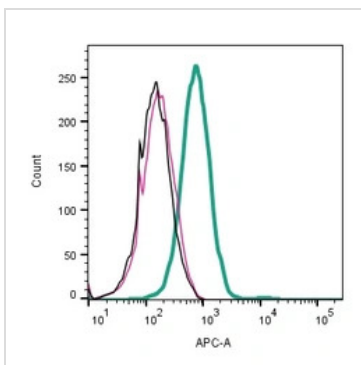
Purchasers shall not, and agree not to enable third parties to, analyze, copy, reverse engineer or otherwise attempt to determine the structure or sequence of the product.

DATA IMAGES



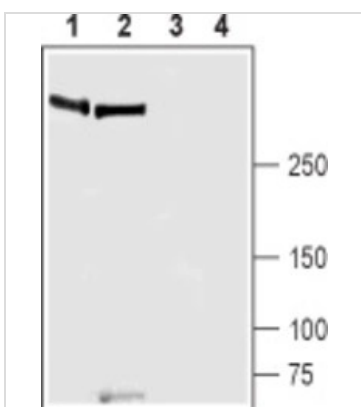
GTX04535 IHC-Fr Image

IHC-Fr analysis of rat olfactory bulb tissue using GTX04535 FAM38A antibody.
Piezo1 staining (green) appears in the neuropil with varying intensity within and between glomeruli.
Green : Primary antibody
Blue : DAPI



GTX04535 FACS Image

FACS analysis of J774 cells using GTX04535 FAM37A antibody.
Green : Primary antibody
Red : Isotype control
Black : Unlabeled cells
Dilution : 2.5 µg



GTX04535 WB Image

WB analysis of various tissue lysate using GTX04535 FAM38A antibody prior incubated with (Lane 3-4) or without (Lane 1-2) blocking peptide.
Lane 1 and 3 : Rat lung tissue lysate
Lane 2 and 4 : Mouse lung tissue lysate
Dilution : 1:600



For full product information, images and publications, please visit our [website](#).