



SZABO SCANDIC

Part of Europa Biosite

Produktinformation



Forschungsprodukte & Biochemikalien



Zellkultur & Verbrauchsmaterial



Diagnostik & molekulare Diagnostik



Laborgeräte & Service

Weitere Information auf den folgenden Seiten!
See the following pages for more information!



Lieferung & Zahlungsart

siehe unsere [Liefer- und Versandbedingungen](#)

Zuschläge

- Mindermengenzuschlag
- Trockeneiszuschlag
- Gefahrgutzuschlag
- Expressversand

SZABO-SCANDIC HandelsgmbH

Quellenstraße 110, A-1100 Wien

T. +43(0)1 489 3961-0

F. +43(0)1 489 3961-7

mail@szabo-scandic.com

www.szabo-scandic.com

[linkedin.com/company/szaboscandic](https://www.linkedin.com/company/szaboscandic) 

FAM38B antibody

Cat. No. GTX04536

Host	Rabbit
Clonality	Polyclonal
Isotype	IgG
Application	WB, IHC-Fr
Reactivity	Human, Mouse, Rat

Package
50 µl

APPLICATION

Application Note

*Optimal dilutions/concentrations should be determined by the researcher.

Suggested dilution	Recommended dilution
WB	Assay dependent
IHC-Fr	Assay dependent

Not tested in other applications.

Calculated MW 318 kDa. ([Note](#))

PROPERTIES

Form	Liquid
Buffer	PBS pH 7.4, 1% BSA
Preservative	0.05% Sodium Azide
Storage	Store as concentrated solution. Centrifuge briefly prior to opening vial. For short-term storage (1-2 weeks), store at 4°C. For long-term storage, aliquot and store at -20°C or below. Avoid multiple freeze-thaw cycles.
Concentration	0.8 mg/ml (Please refer to the vial label for the specific concentration.)
Immunogen	Peptide (C)RTIFHDITRLHLD, corresponding to amino acid residues 1092 - 1104 of human Piezo2 (Accession Q9H5I5).
Purification	Purified by antigen-affinity chromatography
Conjugation	Unconjugated

Note

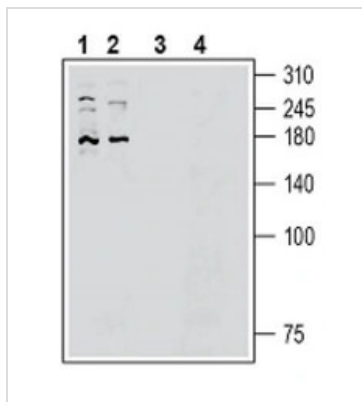
For laboratory research use only. Not for any clinical, therapeutic, or diagnostic use in humans or animals. Not for animal or human consumption.

Purchasers shall not, and agree not to enable third parties to, analyze, copy, reverse engineer or otherwise attempt to determine the structure or sequence of the product.



For full product information, images and publications, please visit our [website](#).

DATA IMAGES

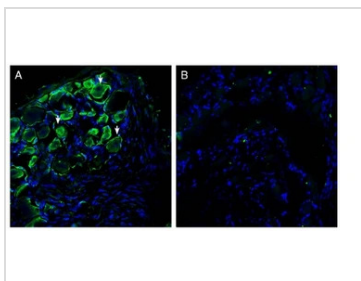
**GTX04536 WB Image**

WB analysis of various samples using GTX04536 FAM38B antibody prior incubated with (Lane 3-4) or without (Lane 1-2) blocking peptide.

Lane 1 and 3 : HepG2 whole cell lysate

Lane 2 and 4 : HUVEC whole cell lysate

Dilution : 1:200

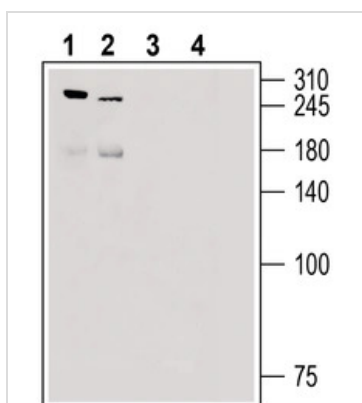
**GTX04536 IHC-Fr Image**

IHC-Fr analysis of rat dorsal root ganglion tissue using GTX04536 FAM38A antibody prior incubated with (Panel B) or without (Panel A) immunogen peptide. FAM38B immunoreactivity appeared in neuron profiles (arrows).

Green : Primary antibody

Blue : DAPI

Dilution : 1:200

**GTX04536 WB Image**

WB analysis of various tissue lysate using GTX04536 FAM38B antibody prior incubated with (Lane 3-4) or without (Lane 1-2) blocking peptide.

Lane 1 and 3 : Rat dorsal root ganglion tissue lysate

Lane 2 and 4 : Mouse lung tissue lysate

Dilution : 1:200



For full product information, images and publications, please visit our [website](#).