



SZABO SCANDIC

Part of Europa Biosite

Produktinformation



Forschungsprodukte & Biochemikalien



Zellkultur & Verbrauchsmaterial



Diagnostik & molekulare Diagnostik



Laborgeräte & Service

Weitere Information auf den folgenden Seiten!
See the following pages for more information!



Lieferung & Zahlungsart

siehe unsere [Liefer- und Versandbedingungen](#)

Zuschläge

- Mindermengenzuschlag
- Trockeneiszuschlag
- Gefahrgutzuschlag
- Expressversand

SZABO-SCANDIC HandelsgmbH

Quellenstraße 110, A-1100 Wien

T. +43(0)1 489 3961-0

F. +43(0)1 489 3961-7

mail@szabo-scandic.com

www.szabo-scandic.com

[linkedin.com/company/szaboscandic](https://www.linkedin.com/company/szaboscandic) 

NCAM2 antibody

Cat. No. GTX04542

Host	Rabbit
Clonality	Polyclonal
Isotype	IgG
Application	WB, IHC-Fr
Reactivity	Human, Mouse, Rat

Package
50 µl

APPLICATION

Application Note

*Optimal dilutions/concentrations should be determined by the researcher.

Suggested dilution	Recommended dilution
WB	Assay dependent
IHC-Fr	Assay dependent

Not tested in other applications.

Calculated MW 93 kDa. ([Note](#))

PROPERTIES

Form	Liquid
Buffer	PBS pH 7.4, 1% BSA
Preservative	0.05% Sodium Azide
Storage	Store as concentrated solution. Centrifuge briefly prior to opening vial. For short-term storage (1-2 weeks), store at 4°C. For long-term storage, aliquot and store at -20°C or below. Avoid multiple freeze-thaw cycles.
Concentration	0.8 mg/ml (Please refer to the vial label for the specific concentration.)
Immunogen	Peptide (C)KEDQWLEKKVQGNKDH, corresponding to amino acid residues 635-650 of mouse NCAM-2 (Accession O35136).
Purification	Purified by antigen-affinity chromatography
Conjugation	Unconjugated

Note

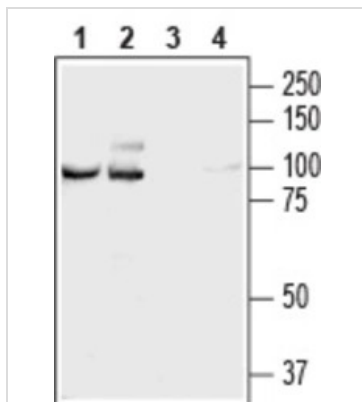
For laboratory research use only. Not for any clinical, therapeutic, or diagnostic use in humans or animals. Not for animal or human consumption.

Purchasers shall not, and agree not to enable third parties to, analyze, copy, reverse engineer or otherwise attempt to determine the structure or sequence of the product.



For full product information, images and publications, please visit our [website](#).

DATA IMAGES



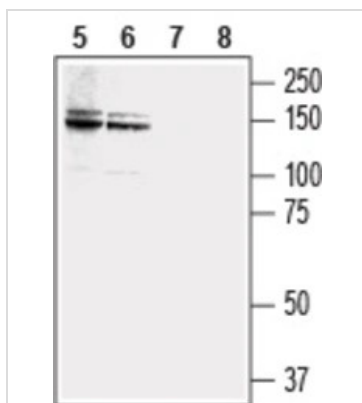
GTX04542 WB Image

WB analysis of various samples using GTX04542 NCAM2 antibody prior incubated with (Lane 3-4) or without (Lane 1-2) blocking peptide.

Lane 1 and 3 : Rat brain tissue lysate

Lane 2 and 4 : Mouse brain tissue lysate

Dilution : 1:200



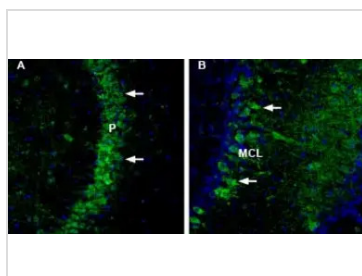
GTX04542 WB Image

WB analysis of various samples using GTX04542 NCAM2 antibody prior incubated with (Lane 7-8) or without (Lane 5-6) blocking peptide.

Lane 5 and 7 : LNCaP whole cell lysate

Lane 6 and 8 : MCF-7 whole cell lysate

Dilution : 1:200



GTX04542 IHC-Fr Image

IHC-Fr analysis analysis of mouse brain tissue using GTX04542 NCAM2 antibody.

Panel A : In the hippocampal CA3 region, NCAM2 appears in the pyramidal layer (P, arrows).

Panel B : In the olfactory bulb, NCAM2 appears in the Mitral cell layer (MCL, arrows).

Green : Primary antibody

Blue : DAPI



For full product information, images and publications, please visit our [website](#).