



SZABO SCANDIC

Part of Europa Biosite

Produktinformation



Forschungsprodukte & Biochemikalien



Zellkultur & Verbrauchsmaterial



Diagnostik & molekulare Diagnostik



Laborgeräte & Service

Weitere Information auf den folgenden Seiten!
See the following pages for more information!



Lieferung & Zahlungsart

siehe unsere [Liefer- und Versandbedingungen](#)

Zuschläge

- Mindermengenzuschlag
- Trockeneiszuschlag
- Gefahrgutzuschlag
- Expressversand

SZABO-SCANDIC HandelsgmbH

Quellenstraße 110, A-1100 Wien

T. +43(0)1 489 3961-0

F. +43(0)1 489 3961-7

mail@szabo-scandic.com

www.szabo-scandic.com

[linkedin.com/company/szaboscandic](https://www.linkedin.com/company/szaboscandic) 

CDH11 antibody

Cat. No. GTX04544

Host	Rabbit
Clonality	Polyclonal
Isotype	IgG
Application	WB, IHC-P, FACS, ELISA
Reactivity	Human, Mouse, Rat

Package
100 µg

APPLICATION

Application Note

*Optimal dilutions/concentrations should be determined by the researcher.

Suggested dilution	Recommended dilution
WB	0.25-0.5 µg/mL
IHC-P	2-5 µg/mL
FACS	1-3 µg/1x10 ⁶ cells
ELISA	0.1-0.5 µg/mL

Not tested in other applications.

Calculated MW 88 kDa. ([Note](#))

PROPERTIES

Form	Liquid
Buffer	4mg Trehalose, 0.9mg NaCl, 0.2 mg Na ₂ HPO ₄
Preservative	No preservatives
Storage	Store as concentrated solution. Centrifuge briefly prior to opening vial. For short-term storage (1-2 weeks), store at 4°C. For long-term storage, aliquot and store at -20°C or below. Avoid multiple freeze-thaw cycles.
Concentration	0.5 mg/ml (Please refer to the vial label for the specific concentration.)
Immunogen	E.coli-derived human OB Cadherin/CDH11 recombinant protein (Position: K371-S796).
Purification	Purified by affinity chromatography
Conjugation	Unconjugated

Note

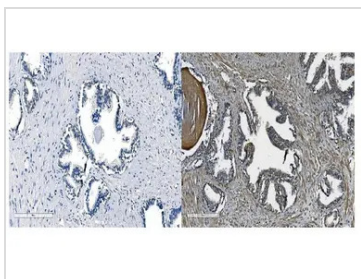
For laboratory research use only. Not for any clinical, therapeutic, or diagnostic use in humans or animals. Not for animal or human consumption.

Purchasers shall not, and agree not to enable third parties to, analyze, copy, reverse engineer or otherwise attempt to determine the structure or sequence of the product.



For full product information, images and publications, please visit our [website](#).

DATA IMAGES

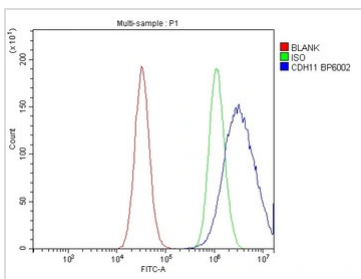


GTX04544 IHC-P Image

IHC-P analysis of human prostate cancer tissue using GTX04544 CDH11 antibody.

Antigen retrieval : Heat mediated EDTA buffer (pH8.0)

Dilution : 2 µg/mL



GTX04544 FACS Image

FACS analysis of PC-3 cells using GTX04544 CDH11 antibody.

Blue : Primary antibody

Green : Isotype control

Red : Unlabelled sample

Dilution : 1 µg/1x10⁶ cells

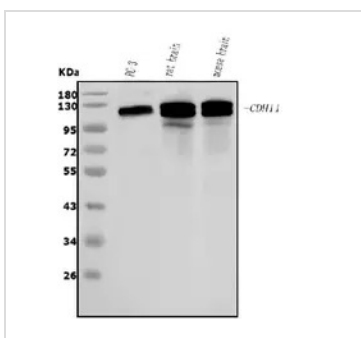


GTX04544 IHC-P Image

IHC-P analysis of human liver cancer tissue using GTX04544 CDH11 antibody.

Antigen retrieval : Heat mediated EDTA buffer (pH8.0)

Dilution : 2 µg/mL



GTX04544 WB Image

WB analysis of various whole cell lysates using GTX04544 CDH11 antibody.

Lane 1: PC-3 whole cell lysate

Lane 2 : Rat brain tissue lysate

Lane 3 : Mouse brain tissue lysate

Dilution : 0.5 µg/mL

Loading : 50 µg



For full product information, images and publications, please visit our [website](#).