



# SZABO SCANDIC

Part of Europa Biosite

## Produktinformation



Forschungsprodukte & Biochemikalien



Zellkultur & Verbrauchsmaterial



Diagnostik & molekulare Diagnostik



Laborgeräte & Service

Weitere Information auf den folgenden Seiten!  
See the following pages for more information!



### Lieferung & Zahlungsart

siehe unsere [Liefer- und Versandbedingungen](#)

### Zuschläge

- Mindermengenzuschlag
- Trockeneiszuschlag
- Gefahrgutzuschlag
- Expressversand

### SZABO-SCANDIC HandelsgmbH

Quellenstraße 110, A-1100 Wien

T. +43(0)1 489 3961-0

F. +43(0)1 489 3961-7

[mail@szabo-scandic.com](mailto:mail@szabo-scandic.com)

[www.szabo-scandic.com](http://www.szabo-scandic.com)

[linkedin.com/company/szaboscandic](https://www.linkedin.com/company/szaboscandic) 

## TGF beta Receptor I antibody

Cat. No. GTX04547

Host	Rabbit
Clonality	Polyclonal
Isotype	IgG
Application	WB, ICC/IF, IHC-P
Reactivity	Human, Mouse, Rat, Bovine

Package  
100 µl

## APPLICATION

## Application Note

\*Optimal dilutions/concentrations should be determined by the researcher.

Suggested dilution	Recommended dilution
WB	1:300-1:5000
ICC/IF	1:50-1:200
IHC-P	1:200-1:400

Not tested in other applications.

Calculated MW 56 kDa. ([Note](#))

## PROPERTIES

Form	Liquid
Buffer	0.01M TBS, 1% BSA, 50% Glycerol
Preservative	0.03% Proclin300
Storage	Store as concentrated solution. Centrifuge briefly prior to opening vial. For short-term storage (1-2 weeks), store at 4°C. For long-term storage, aliquot and store at -20°C or below. Avoid multiple freeze-thaw cycles.
Concentration	1 mg/ml (Please refer to the vial label for the specific concentration.)
Immunogen	KLH conjugated synthetic peptide derived from human TGF-beta R1 (301-400aa)
Purification	Protein A purified
Conjugation	Unconjugated

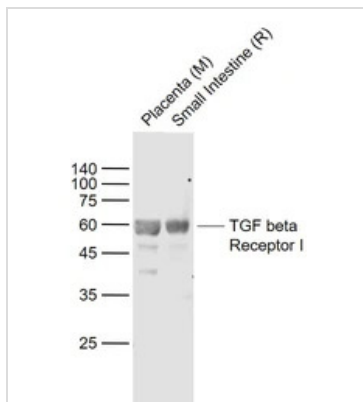
**Note** For laboratory research use only. Not for any clinical, therapeutic, or diagnostic use in humans or animals. Not for animal or human consumption.

Purchasers shall not, and agree not to enable third parties to, analyze, copy, reverse engineer or otherwise attempt to determine the structure or sequence of the product.



For full product information, images and publications, please visit our [website](#).

DATA IMAGES



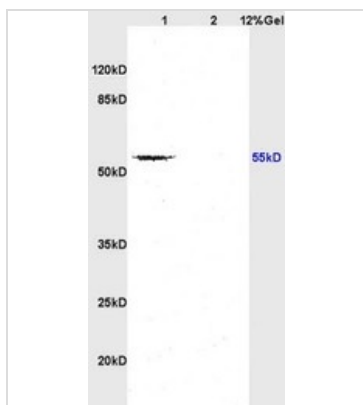
**GTX04547 WB Image**

WB analysis of various tissue lysates using GTX04547 TGF beta Receptor I antibody.

Lane1 : Mouse placenta tissue lysate

Lane2 : Rat small intestine tissue lysate

Dilution : 1:1000



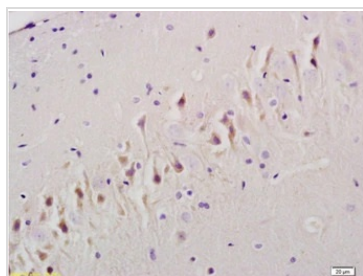
**GTX04547 WB Image**

WB analysis of various tissue lysates using GTX04547 TGF beta Receptor I antibody.

Lane1 : Rat brain tissue lysate

Lane2 : Mouse embryo tissue lysate

Dilution : 1:200



**GTX04547 IHC-P Image**

IHC-P analysis of rat brain tissue using GTX04547 TGF beta Receptor I antibody.

Dilution : 1:200



For full product information, images and publications, please visit our [website](http://www.genetex.com).