



SZABO SCANDIC

Part of Europa Biosite

Produktinformation



Forschungsprodukte & Biochemikalien



Zellkultur & Verbrauchsmaterial



Diagnostik & molekulare Diagnostik



Laborgeräte & Service

Weitere Information auf den folgenden Seiten!
See the following pages for more information!



Lieferung & Zahlungsart

siehe unsere [Liefer- und Versandbedingungen](#)

Zuschläge

- Mindermengenzuschlag
- Trockeneiszuschlag
- Gefahrgutzuschlag
- Expressversand

SZABO-SCANDIC HandelsgmbH

Quellenstraße 110, A-1100 Wien

T. +43(0)1 489 3961-0

F. +43(0)1 489 3961-7

mail@szabo-scandic.com

www.szabo-scandic.com

[linkedin.com/company/szaboscandic](https://www.linkedin.com/company/szaboscandic) 

GLIS1 antibody

Cat. No. GTX04548

Host	Rabbit
Clonality	Polyclonal
Isotype	IgG
Application	WB, ICC/IF, IHC-P, FACS, ELISA
Reactivity	Human

Package
100 µg

APPLICATION

Application Note

*Optimal dilutions/concentrations should be determined by the researcher.

Suggested dilution	Recommended dilution
WB	0.25-0.5 µg/mL
ICC/IF	5 µg/ml/ml
IHC-P	2-5 µg/mL
FACS	1-3 µg/1x10 ⁶ cells
ELISA	0.1-0.5 µg/mL

Not tested in other applications.

Calculated MW 66 kDa. ([Note](#))

PROPERTIES

Form	Liquid
Buffer	4 mg Trehalose, 0.9 mg NaCl, 0.2 mg Na ₂ HPO ₄
Preservative	No preservatives
Storage	Store as concentrated solution. Centrifuge briefly prior to opening vial. For short-term storage (1-2 weeks), store at 4°C. For long-term storage, aliquot and store at -20°C or below. Avoid multiple freeze-thaw cycles.
Concentration	0.5 mg/ml (Please refer to the vial label for the specific concentration.)
Immunogen	E.coli-derived human GLIS1 recombinant protein (Position: M1-T620).
Purification	Purified by antigen-affinity chromatography
Conjugation	Unconjugated



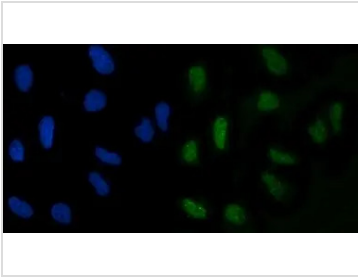
For full product information, images and publications, please visit our [website](#).

For laboratory research use only. Not for any clinical, therapeutic, or diagnostic use in humans or animals. Not for animal or human consumption.

Note

Purchasers shall not, and agree not to enable third parties to, analyze, copy, reverse engineer or otherwise attempt to determine the structure or sequence of the product.

DATA IMAGES

**GTX04548 ICC/IF Image**

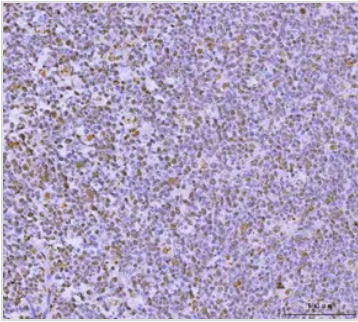
ICC/IF analysis of HeLa cells using GTX04548 GLIS1 antibody.

Green : Primary antibody

Blue : DAPI

Antigen retrieval : IHC enzyme antigen retrieval reagent

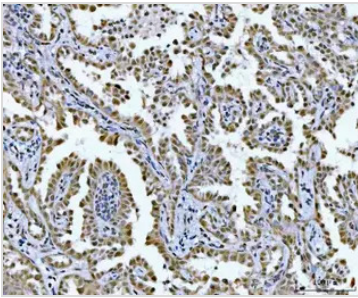
Dilution : 5 µg/mL

**GTX04548 IHC-P Image**

IHC-P analysis of human tonsil tissue using GTX04548 GLIS1 antibody.

Antigen retrieval : Heat mediated EDTA buffer (pH8.0)

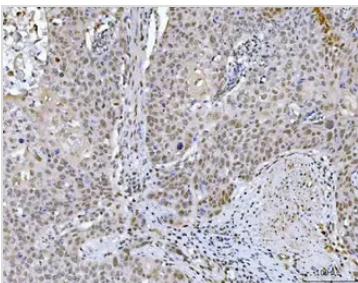
Dilution : 2 µg/mL

**GTX04548 IHC-P Image**

IHC-P analysis of human lung cancer tissue using GTX04548 GLIS1 antibody.

Antigen retrieval : Heat mediated EDTA buffer (pH8.0)

Dilution : 2 µg/mL

**GTX04548 IHC-P Image**

IHC-P analysis of human esophageal squamous carcinoma tissue using GTX04548 GLIS1 antibody.

Antigen retrieval : Heat mediated EDTA buffer (pH8.0)

Dilution : 2 µg/mL



For full product information, images and publications, please visit our [website](#).