



SZABO SCANDIC

Part of Europa Biosite

Produktinformation



Forschungsprodukte & Biochemikalien



Zellkultur & Verbrauchsmaterial



Diagnostik & molekulare Diagnostik



Laborgeräte & Service

Weitere Information auf den folgenden Seiten!
See the following pages for more information!



Lieferung & Zahlungsart

siehe unsere [Liefer- und Versandbedingungen](#)

Zuschläge

- Mindermengenzuschlag
- Trockeneiszuschlag
- Gefahrgutzuschlag
- Expressversand

SZABO-SCANDIC HandelsgmbH

Quellenstraße 110, A-1100 Wien

T. +43(0)1 489 3961-0

F. +43(0)1 489 3961-7

mail@szabo-scandic.com

www.szabo-scandic.com

[linkedin.com/company/szaboscandic](https://www.linkedin.com/company/szaboscandic) 

IL1F8 antibody

Cat. No. GTX04549

| | |
|-------------|-------------------|
| Host | Rabbit |
| Clonality | Polyclonal |
| Isotype | IgG |
| Application | WB, ICC/IF, IHC-P |
| Reactivity | Human, Mouse |

Package
100 µl

APPLICATION

Application Note

*Optimal dilutions/concentrations should be determined by the researcher.

| Suggested dilution | Recommended dilution |
|--------------------|----------------------|
| WB | 1:500-1:2000 |
| ICC/IF | 1:100-1:500 |
| IHC-P | 1:50-1:200 |

Not tested in other applications.

Calculated MW 19 kDa. ([Note](#))

PROPERTIES

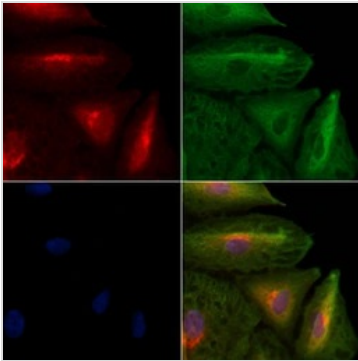
| | |
|---------------|--|
| Form | Liquid |
| Buffer | PBS, 150mM NaCl, 50% Glycerol |
| Preservative | 0.02% Sodium Azide |
| Storage | Store as concentrated solution. Centrifuge briefly prior to opening vial. For short-term storage (1-2 weeks), store at 4°C. For long-term storage, aliquot and store at -20°C or below. Avoid multiple freeze-thaw cycles. |
| Concentration | 1 mg/ml (Please refer to the vial label for the specific concentration.) |
| Immunogen | A synthesized peptide derived from human IL36B(Accession Q9NZH7), corresponding to amino acid residues W126-M164. |
| Purification | Purified by affinity chromatography From serum |
| Conjugation | Unconjugated |

Note For laboratory research use only. Not for any clinical, therapeutic, or diagnostic use in humans or animals. Not for animal or human consumption.

Purchasers shall not, and agree not to enable third parties to, analyze, copy, reverse engineer or otherwise attempt to determine the structure or sequence of the product.



For full product information, images and publications, please visit our [website](#).

DATA IMAGES

GTX04549 ICC/IF Image

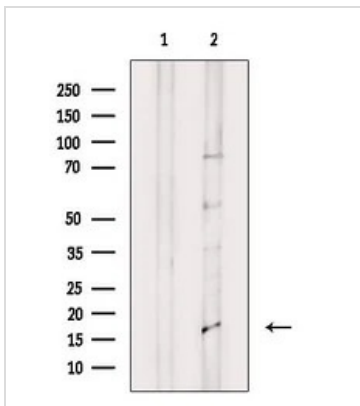
ICC/IF analysis of PFA fixed A549 cells using GTX04549 IL1F8 antibody.

Red : Primary antibody

Green : Beta tubulin

Blue : DAPI

Permeabilization : 0.1% Triton X-100


GTX04549 WB Image

WB analysis of HepG2 whole cell lysate with serum starvation treatment using GTX04549 IL1F8 antibody.

The lane on the left was treated with blocking peptide.



For full product information, images and publications, please visit our [website](#).