



SZABO SCANDIC

Part of Europa Biosite

Produktinformation



Forschungsprodukte & Biochemikalien



Zellkultur & Verbrauchsmaterial



Diagnostik & molekulare Diagnostik



Laborgeräte & Service

Weitere Information auf den folgenden Seiten!
See the following pages for more information!



Lieferung & Zahlungsart

siehe unsere [Liefer- und Versandbedingungen](#)

Zuschläge

- Mindermengenzuschlag
- Trockeneiszuschlag
- Gefahrgutzuschlag
- Expressversand

SZABO-SCANDIC HandelsgmbH

Quellenstraße 110, A-1100 Wien

T. +43(0)1 489 3961-0

F. +43(0)1 489 3961-7

mail@szabo-scandic.com

www.szabo-scandic.com

[linkedin.com/company/szaboscandic](https://www.linkedin.com/company/szaboscandic) 

LGR5 antibody

Cat. No. GTX04555

Host	Rabbit
Clonality	Polyclonal
Isotype	IgG
Application	WB, ICC/IF, IHC-P
Reactivity	Human, Mouse

Package
100 µl

APPLICATION

Application Note

*Optimal dilutions/concentrations should be determined by the researcher.

Suggested dilution	Recommended dilution
WB	1:500-1:2000
ICC/IF	1:100-1:500
IHC-P	1:50-1:200

Not tested in other applications.

Calculated MW 100 kDa. ([Note](#))

PROPERTIES

Form	Liquid
Buffer	PBS, 150mM NaCl, 50% Glycerol
Preservative	0.02% sodium azide
Storage	Store as concentrated solution. Centrifuge briefly prior to opening vial. For short-term storage (1-2 weeks), store at 4°C. For long-term storage, aliquot and store at -20°C or below. Avoid multiple freeze-thaw cycles.
Concentration	1 mg/ml (Please refer to the vial label for the specific concentration.)
Immunogen	A synthesized peptide derived from human LGR5(Accession O75473), corresponding to amino acid residues F672-T722.
Purification	Purified by antigen-affinity chromatography From serum
Conjugation	Unconjugated (Please refer to the vial label for the specific concentration.)



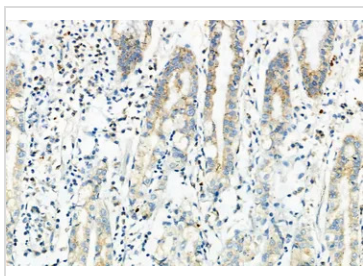
For full product information, images and publications, please visit our [website](#).

For laboratory research use only. Not for any clinical, therapeutic, or diagnostic use in humans or animals. Not for animal or human consumption.

Note

Purchasers shall not, and agree not to enable third parties to, analyze, copy, reverse engineer or otherwise attempt to determine the structure or sequence of the product.

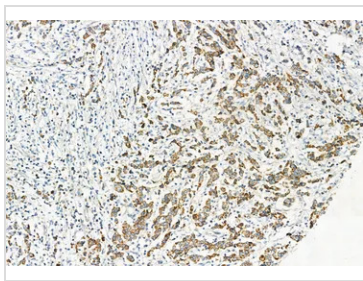
DATA IMAGES

**GTX04555 IHC-P Image**

IHC-P analysis of human normal tissues adjacent to gastric cancer tissue using GTX04555 LGR5 antibody.

Antigen retrieval : Heat mediated citrate buffer

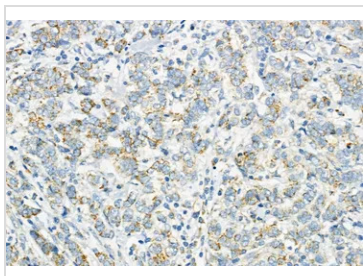
Dilution : 1:100

**GTX04555 IHC-P Image**

IHC-P analysis of human colorectal cancer tissue using GTX04555 LGR5 antibody.

Antigen retrieval : Heat mediated citrate buffer

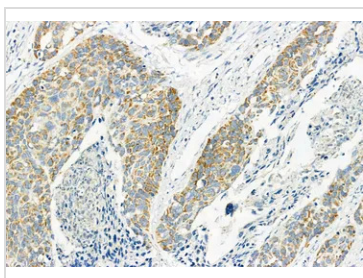
Dilution : 1:100

**GTX04555 IHC-P Image**

IHC-P analysis of human mammary cancer tissue using GTX04555 LGR5 antibody.

Antigen retrieval : Heat mediated citrate buffer

Dilution : 1:100

**GTX04555 IHC-P Image**

IHC-P analysis of human esophageal cancer tissue using GTX04555 LGR5 antibody.

Antigen retrieval : Heat mediated citrate buffer

Dilution : 1:100



For full product information, images and publications, please visit our [website](#).