



# SZABO SCANDIC

Part of Europa Biosite

## Produktinformation



Forschungsprodukte & Biochemikalien



Zellkultur & Verbrauchsmaterial



Diagnostik & molekulare Diagnostik



Laborgeräte & Service

Weitere Information auf den folgenden Seiten!  
See the following pages for more information!



### Lieferung & Zahlungsart

siehe unsere [Liefer- und Versandbedingungen](#)

### Zuschläge

- Mindermengenzuschlag
- Trockeneiszuschlag
- Gefahrgutzuschlag
- Expressversand

### SZABO-SCANDIC HandelsgmbH

Quellenstraße 110, A-1100 Wien

T. +43(0)1 489 3961-0

F. +43(0)1 489 3961-7

[mail@szabo-scandic.com](mailto:mail@szabo-scandic.com)

[www.szabo-scandic.com](http://www.szabo-scandic.com)

[linkedin.com/company/szaboscandic](https://www.linkedin.com/company/szaboscandic) 

## Adenosine A2a Receptor antibody [7F6-G5-A2]

**Cat. No. GTX04561**

<b>Host</b>	Mouse
<b>Clonality</b>	Monoclonal
<b>Isotype</b>	IgG2a
<b>Application</b>	WB, ICC/IF, IHC-P, IHC-Fr, FACS, CyTOF
<b>Reactivity</b>	Human, Mouse, Rat, Rabbit, Sheep, Dog, Guinea pig, Pig

**Package**  
100 µl

## APPLICATION

**Application Note**

\*Optimal dilutions/concentrations should be determined by the researcher.

Suggested dilution	Recommended dilution
WB	Assay dependent
ICC/IF	Assay dependent
IHC-P	Assay dependent
IHC-Fr	Assay dependent
FACS	Assay dependent
CyTOF	Assay dependent

Not tested in other applications.

**Calculated MW** 45 kDa. ( [Note](#) )

## PROPERTIES

<b>Form</b>	Liquid
<b>Buffer</b>	PBS
<b>Preservative</b>	0.02% sodium azide
<b>Storage</b>	Store as concentrated solution. Centrifuge briefly prior to opening vial. For short-term storage (1-2 weeks), store at 4°C. For long-term storage, aliquot and store at -20°C or below. Avoid multiple freeze-thaw cycles.
<b>Concentration</b>	1 mg/ml (Please refer to the vial label for the specific concentration.)
<b>Immunogen</b>	Full length recombinant human Adenosine A2a R(UniProt# P29274). Epitope mapped to SSQLPGER in the third intracellular loop (PMID 9822147).
<b>Purification</b>	Protein G purified
<b>Conjugation</b>	Unconjugated



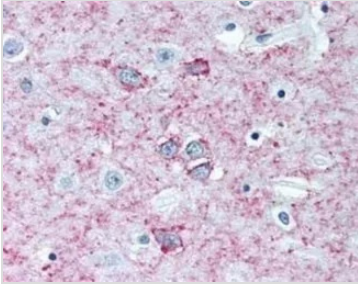
For full product information, images and publications, please visit our [website](#).

For laboratory research use only. Not for any clinical, therapeutic, or diagnostic use in humans or animals. Not for animal or human consumption.

#### Note

Purchasers shall not, and agree not to enable third parties to, analyze, copy, reverse engineer or otherwise attempt to determine the structure or sequence of the product.

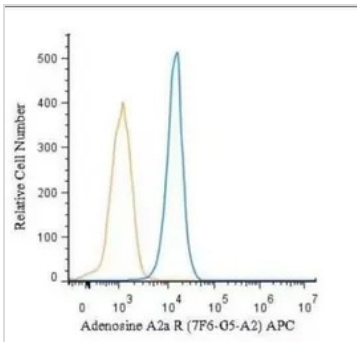
#### DATA IMAGES



#### GTX04561 IHC-P Image

IHC-P analysis of human brain (putamen) tissue using GTX04561 Adenosine A2a Receptor antibody [7F6-G5-A2].

Dilution : 5 µg/mL



#### GTX04561 FACS Image

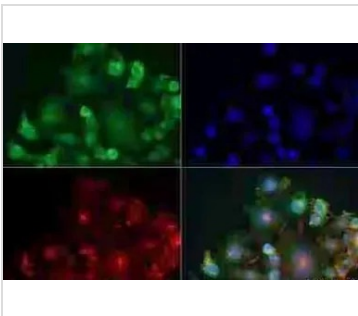
FACS analysis of 4% PFA fixed U-937 cells using GTX04561 Adenosine A2a Receptor antibody [7F6-G5-A2].

Blue : Primary antibody

Orange : Isotype control

Permeabilization : 0.1% saponin

Dilution : 1 µg/mL



#### GTX04561 ICC/IF Image

ICC/IF analysis of 4% PFA fixed Neuro2a cells using GTX04561 Adenosine A2a Receptor antibody [7F6-G5-A2].

Green : Primary antibody

Red : Actin

Blue : DAPI

Permeabilization : 0.5% Triton X-100

Dilution : 1:50



For full product information, images and publications, please visit our [website](#).