



SZABO SCANDIC

Part of Europa Biosite

Produktinformation



Forschungsprodukte & Biochemikalien



Zellkultur & Verbrauchsmaterial



Diagnostik & molekulare Diagnostik



Laborgeräte & Service

Weitere Information auf den folgenden Seiten!
See the following pages for more information!



Lieferung & Zahlungsart

siehe unsere [Liefer- und Versandbedingungen](#)

Zuschläge

- Mindermengenzuschlag
- Trockeneiszuschlag
- Gefahrgutzuschlag
- Expressversand

SZABO-SCANDIC HandelsgmbH

Quellenstraße 110, A-1100 Wien

T. +43(0)1 489 3961-0

F. +43(0)1 489 3961-7

mail@szabo-scandic.com

www.szabo-scandic.com

[linkedin.com/company/szaboscandic](https://www.linkedin.com/company/szaboscandic) 

Cytokeratin 20 antibody

Cat. No. GTX04562

Host	Rabbit
Clonality	Polyclonal
Isotype	IgG
Application	WB
Reactivity	Human, Mouse

Package
100 µl

APPLICATION

Application Note

*Optimal dilutions/concentrations should be determined by the researcher.

Suggested dilution **Recommended dilution**

WB Assay dependent

Not tested in other applications.

Calculated MW 48 kDa. ([Note](#))

PROPERTIES

Form Liquid**Buffer** PBS, 50% Glycerol**Preservative** 0.02% sodium azide**Storage** Store as concentrated solution. Centrifuge briefly prior to opening vial. For short-term storage (1-2 weeks), store at 4°C. For long-term storage, aliquot and store at -20°C or below. Avoid multiple freeze-thaw cycles.**Concentration** Batch dependent (Please refer to the vial label for the specific concentration.)**Immunogen** Recombinant fusion protein containing a sequence corresponding to amino acids 245-424 of human Cytokeratin 20 (KRT20) (NP_061883.1).**Purification** Purified by affinity chromatography**Conjugation** Unconjugated**Note**

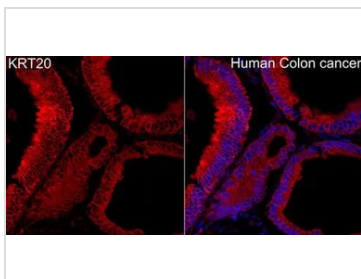
For laboratory research use only. Not for any clinical, therapeutic, or diagnostic use in humans or animals. Not for animal or human consumption.

Purchasers shall not, and agree not to enable third parties to, analyze, copy, reverse engineer or otherwise attempt to determine the structure or sequence of the product.



For full product information, images and publications, please visit our [website](#).

DATA IMAGES

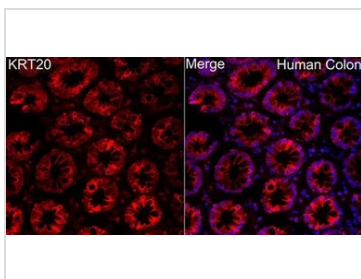
**GTX04562 Image**

IHC-P analysis of human colon carcinoma tissue using GTX04562 Cytokeratin 20 antibody.

Orange : Primary antibody

Blue : DAPI

Dilution : 1:100

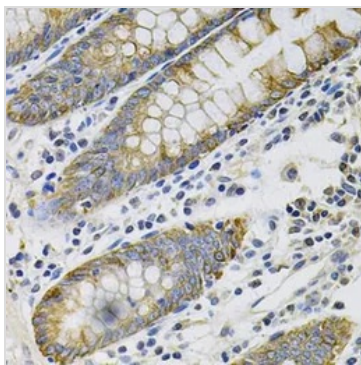
**GTX04562 Image**

IHC-P analysis of human colon tissue using GTX04562 Cytokeratin 20 antibody.

Orange : Primary antibody

Blue : DAPI

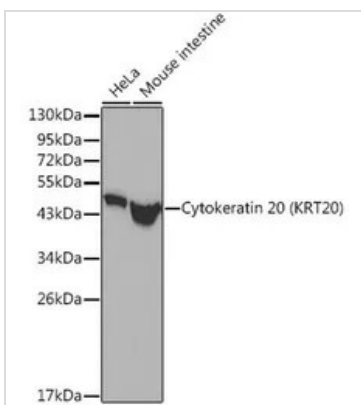
Dilution : 1:100

**GTX04562 Image**

IHC-P analysis of human colon tissue using GTX04562 Cytokeratin 20 antibody.

Antigen retrieval : Heat mediated with 10 mM PBS buffer pH 7.2

Dilution : 1:100

**GTX04562 WB Image**

WB analysis of various samples using GTX04562 Cytokeratin 20 antibody.

Lane 1 : HeLa whole cell lysate

Lane 2 : mouse intestine tissue lysate

Loading : 25 μ g



For full product information, images and publications, please visit our [website](#).