



# SZABO SCANDIC

Part of Europa Biosite

## Produktinformation



Forschungsprodukte & Biochemikalien



Zellkultur & Verbrauchsmaterial



Diagnostik & molekulare Diagnostik



Laborgeräte & Service

Weitere Information auf den folgenden Seiten!  
See the following pages for more information!



### Lieferung & Zahlungsart

siehe unsere [Liefer- und Versandbedingungen](#)

### Zuschläge

- Mindermengenzuschlag
- Trockeneiszuschlag
- Gefahrgutzuschlag
- Expressversand

### SZABO-SCANDIC HandelsgmbH

Quellenstraße 110, A-1100 Wien

T. +43(0)1 489 3961-0

F. +43(0)1 489 3961-7

[mail@szabo-scandic.com](mailto:mail@szabo-scandic.com)

[www.szabo-scandic.com](http://www.szabo-scandic.com)

[linkedin.com/company/szaboscandic](https://www.linkedin.com/company/szaboscandic) 

## Klotho antibody

Cat. No. GTX04569

Host	Rabbit
Clonality	Polyclonal
Isotype	IgG
Application	WB, FACS
Reactivity	Human

Package  
400 µl

## APPLICATION

## Application Note

\*Optimal dilutions/concentrations should be determined by the researcher.

Suggested dilution	Recommended dilution
WB	Assay dependent
FACS	Assay dependent

Not tested in other applications.

Calculated MW 116 kDa. ([Note](#))

## PROPERTIES

Form	Liquid
Buffer	PBS
Preservative	0.09% Sodium Azide
Storage	Store as concentrated solution. Centrifuge briefly prior to opening vial. For short-term storage (1-2 weeks), store at 4°C. For long-term storage, aliquot and store at -20°C or below. Avoid multiple freeze-thaw cycles.
Concentration	Batch dependent (Please refer to the vial label for the specific concentration.)
Immunogen	KLH conjugated synthetic peptide between 986-1012 amino acids from the C-terminal region of human Klotho
Purification	Protein A purified followed by peptide affinity purification
Conjugation	Unconjugated

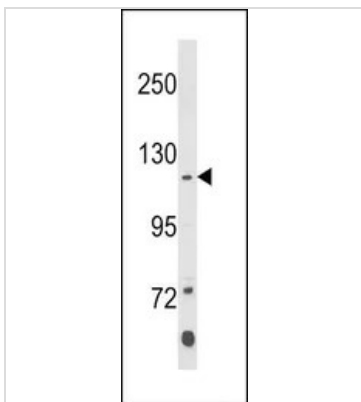
## Note

For laboratory research use only. Not for any clinical, therapeutic, or diagnostic use in humans or animals. Not for animal or human consumption.

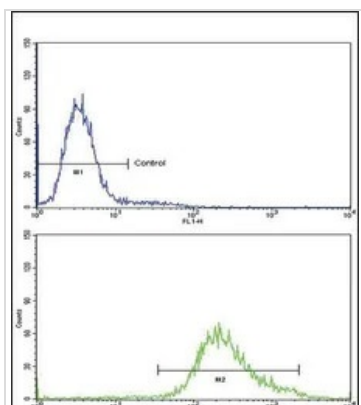
Purchasers shall not, and agree not to enable third parties to, analyze, copy, reverse engineer or otherwise attempt to determine the structure or sequence of the product.



For full product information, images and publications, please visit our [website](#).

**DATA IMAGES**

**GTX04569 WB Image**

WB analysis of K562 whole cell lysate using GTX04569 Klotho antibody.  
Loading : 35  $\mu$ g


**GTX04569 FACS Image**

FACS analysis of K562 cells using GTX04569 Klotho antibody.  
Bottom histogram : Primary antibody  
Top histogram : Negative control cell (Blank)



For full product information, images and publications, please visit our [website](#).