



SZABO SCANDIC

Part of Europa Biosite

Produktinformation



Forschungsprodukte & Biochemikalien



Zellkultur & Verbrauchsmaterial



Diagnostik & molekulare Diagnostik



Laborgeräte & Service

Weitere Information auf den folgenden Seiten!
See the following pages for more information!



Lieferung & Zahlungsart

siehe unsere [Liefer- und Versandbedingungen](#)

Zuschläge

- Mindermengenzuschlag
- Trockeneiszuschlag
- Gefahrgutzuschlag
- Expressversand

SZABO-SCANDIC HandelsgmbH

Quellenstraße 110, A-1100 Wien

T. +43(0)1 489 3961-0

F. +43(0)1 489 3961-7

mail@szabo-scandic.com

www.szabo-scandic.com

[linkedin.com/company/szaboscandic](https://www.linkedin.com/company/szaboscandic) 

IL29 antibody

Cat. No. GTX04572

| | |
|--------------------|------------|
| Host | Rabbit |
| Clonality | Polyclonal |
| Isotype | IgG |
| Application | WB, IHC-P |
| Reactivity | Human |

Package
400 µl

APPLICATION

Application Note

*Optimal dilutions/concentrations should be determined by the researcher.

| Suggested dilution | Recommended dilution |
|--------------------|----------------------|
| WB | Assay dependent |
| IHC-P | Assay dependent |

Not tested in other applications.

Calculated MW 22 kDa. ([Note](#))

PROPERTIES

| | |
|----------------------|--|
| Form | Liquid |
| Buffer | PBS |
| Preservative | 0.09% Sodium Azide |
| Storage | Store as concentrated solution. Centrifuge briefly prior to opening vial. For short-term storage (1-2 weeks), store at 4°C. For long-term storage, aliquot and store at -20°C or below. Avoid multiple freeze-thaw cycles. |
| Concentration | Batch dependent (Please refer to the vial label for the specific concentration.) |
| Immunogen | KLH conjugated synthetic peptide between 54-85 amino acids from the Central region of human IL29. |
| Purification | Purified by Saturated Ammonium Sulfate (SAS) precipitation followed by dialysis against PBS. |
| Conjugation | Unconjugated |

Note

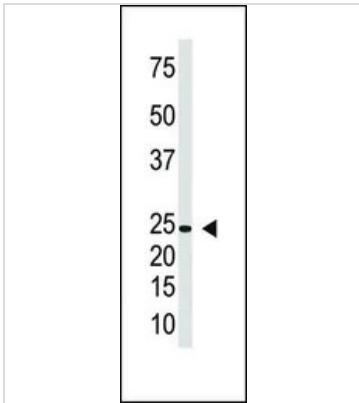
For laboratory research use only. Not for any clinical, therapeutic, or diagnostic use in humans or animals. Not for animal or human consumption.

Purchasers shall not, and agree not to enable third parties to, analyze, copy, reverse engineer or otherwise attempt to determine the structure or sequence of the product.



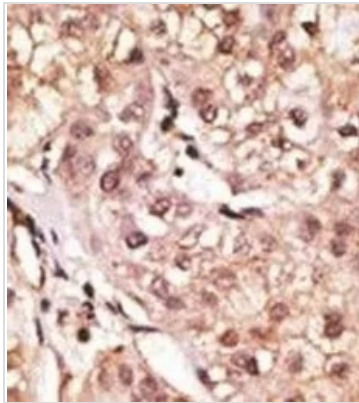
For full product information, images and publications, please visit our [website](#).

DATA IMAGES



GTX04572 WB Image

WB analysis of Jurkat whole cell lysate using GTX04572 IL29 antibody.



GTX04572 IHC-P Image

IHC-P analysis of human hepatocarcinoma tissue using GTX04572 IL29 antibody.



For full product information, images and publications, please visit our [website](#).