



SZABO SCANDIC

Part of Europa Biosite

Produktinformation



Forschungsprodukte & Biochemikalien



Zellkultur & Verbrauchsmaterial



Diagnostik & molekulare Diagnostik



Laborgeräte & Service

Weitere Information auf den folgenden Seiten!
See the following pages for more information!



Lieferung & Zahlungsart

siehe unsere [Liefer- und Versandbedingungen](#)

Zuschläge

- Mindermengenzuschlag
- Trockeneiszuschlag
- Gefahrgutzuschlag
- Expressversand

SZABO-SCANDIC HandelsgmbH

Quellenstraße 110, A-1100 Wien

T. +43(0)1 489 3961-0

F. +43(0)1 489 3961-7

mail@szabo-scandic.com

www.szabo-scandic.com

[linkedin.com/company/szaboscandic](https://www.linkedin.com/company/szaboscandic) 

MMP9 antibody

Cat. No. GTX04573

Host	Rabbit
Clonality	Polyclonal
Isotype	IgG
Application	WB, ICC/IF, IHC-P
Reactivity	Human, Mouse, Rat

Package
100 µl

APPLICATION

Application Note

*Optimal dilutions/concentrations should be determined by the researcher.

Suggested dilution	Recommended dilution
WB	Assay dependent
ICC/IF	Assay dependent
IHC-P	Assay dependent

Not tested in other applications.

Calculated MW 78 kDa. ([Note](#))

PROPERTIES

Form	Liquid
Buffer	PBS pH 7.4, 150 mM NaCl, 50% glycerol
Preservative	0.02% sodium azide
Storage	Store as concentrated solution. Centrifuge briefly prior to opening vial. For short-term storage (1-2 weeks), store at 4°C. For long-term storage, aliquot and store at -20°C or below. Avoid multiple freeze-thaw cycles.
Concentration	1 mg/ml (Please refer to the vial label for the specific concentration.)
Immunogen	A synthesized peptide derived from human MMP9(Accession P14780), corresponding to amino acid residues D660-D707.
Purification	Purified by antigen-affinity chromatography
Conjugation	Unconjugated

Note

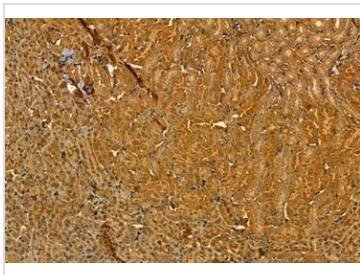
For laboratory research use only. Not for any clinical, therapeutic, or diagnostic use in humans or animals. Not for animal or human consumption.

Purchasers shall not, and agree not to enable third parties to, analyze, copy, reverse engineer or otherwise attempt to determine the structure or sequence of the product.



For full product information, images and publications, please visit our [website](#).

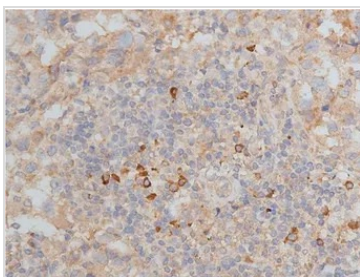
DATA IMAGES

**GTX04573 IHC-P Image**

IHC-P analysis of mouse kidney tissue using GTX04573 MMP9 antibody.

Antigen retrieval : Hear mediated citrate buffer

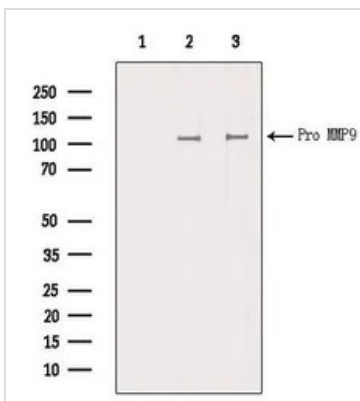
Dilution : 1:100

**GTX04573 IHC-P Image**

IHC-P analysis of human breast cancer tissue using GTX04573 MMP9 antibody.

Antigen retrieval : Hear mediated citrate buffer

Dilution : 1:50

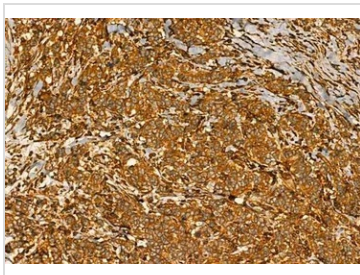
**GTX04573 WB Image**

WB analysis of various lysates using GTX04573 MMP9 antibody.

Lane 1 : B16F10 whole cell lysate with blocking peptide

Lane 2 : B16F10 whole cell lysate

Lane 3 : Mouse muscle tissue lysate

**GTX04573 IHC-P Image**

IHC-P analysis of human mammary cancer tissue using GTX04573 MMP9 antibody.

Antigen retrieval : Hear mediated citrate buffer

Dilution : 1:100



For full product information, images and publications, please visit our [website](#).