



SZABO SCANDIC

Part of Europa Biosite

Produktinformation



Forschungsprodukte & Biochemikalien



Zellkultur & Verbrauchsmaterial



Diagnostik & molekulare Diagnostik



Laborgeräte & Service

Weitere Information auf den folgenden Seiten!
See the following pages for more information!



Lieferung & Zahlungsart

siehe unsere [Liefer- und Versandbedingungen](#)

Zuschläge

- Mindermengenzuschlag
- Trockeneiszuschlag
- Gefahrgutzuschlag
- Expressversand

SZABO-SCANDIC HandelsgmbH

Quellenstraße 110, A-1100 Wien

T. +43(0)1 489 3961-0

F. +43(0)1 489 3961-7

mail@szabo-scandic.com

www.szabo-scandic.com

[linkedin.com/company/szaboscandic](https://www.linkedin.com/company/szaboscandic) 

METTL4 antibody

Cat. No. GTX04574

Host	Rabbit
Clonality	Polyclonal
Isotype	IgG
Application	WB
Reactivity	Rat

Package
100 µl

APPLICATION

Application Note

*Optimal dilutions/concentrations should be determined by the researcher.

Suggested dilution	Recommended dilution
--------------------	----------------------

WB	Assay dependent
----	-----------------

Not tested in other applications.

Calculated MW 54 kDa. ([Note](#))

PROPERTIES

Form Liquid

Buffer PBS, 2% sucrose

Preservative 0.09% Sodium Azide

Storage Store as concentrated solution. Centrifuge briefly prior to opening vial. For short-term storage (1-2 weeks), store at 4°C. For long-term storage, aliquot and store at -20°C or below. Avoid multiple freeze-thaw cycles.

Concentration 0.5 mg/ml (Please refer to the vial label for the specific concentration.)

Immunogen The immunogen is a synthetic peptide directed towards the C terminal region of human Mettl4: SGEFVFPDLSLHKKPYECLVLGRVKEKTALALRNEAVRTPPVDPQRLIVS .

Purification Purified by affinity chromatography

Conjugation Unconjugated

Note

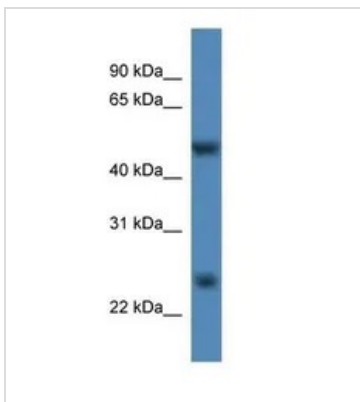
For laboratory research use only. Not for any clinical, therapeutic, or diagnostic use in humans or animals. Not for animal or human consumption.

Purchasers shall not, and agree not to enable third parties to, analyze, copy, reverse engineer or otherwise attempt to determine the structure or sequence of the product.



For full product information, images and publications, please visit our [website](#).

DATA IMAGES

**GTX04574 WB Image**

WB analysis of rat liver tissue lysate using GTX04574 METTL4 antibody.



For full product information, images and publications, please visit our [website](#).