



SZABO SCANDIC

Part of Europa Biosite

Produktinformation



Forschungsprodukte & Biochemikalien



Zellkultur & Verbrauchsmaterial



Diagnostik & molekulare Diagnostik



Laborgeräte & Service

Weitere Information auf den folgenden Seiten!
See the following pages for more information!



Lieferung & Zahlungsart

siehe unsere [Liefer- und Versandbedingungen](#)

Zuschläge

- Mindermengenzuschlag
- Trockeneiszuschlag
- Gefahrgutzuschlag
- Expressversand

SZABO-SCANDIC HandelsgmbH

Quellenstraße 110, A-1100 Wien

T. +43(0)1 489 3961-0

F. +43(0)1 489 3961-7

mail@szabo-scandic.com

www.szabo-scandic.com

[linkedin.com/company/szaboscandic](https://www.linkedin.com/company/szaboscandic) 

Claudin 18.2 antibody [ARC5062-02]

Cat. No. GTX04575

Host	Rabbit
Clonality	Monoclonal
Isotype	IgG
Application	IHC-P
Reactivity	Human

Package
100 µl

APPLICATION

Application Note

*Optimal dilutions/concentrations should be determined by the researcher.

Suggested dilution	Recommended dilution
IHC-P	1:500-1:1000

Not tested in other applications.

Calculated MW 28 kDa. ([Note](#))

PROPERTIES

Form	Liquid
Buffer	PBS pH 7.3, 0.05% BSA, 50% glycerol
Preservative	0.05% proclin300
Storage	Store as concentrated solution. Centrifuge briefly prior to opening vial. For short-term storage (1-2 weeks), store at 4°C. For long-term storage, aliquot and store at -20°C or below. Avoid multiple freeze-thaw cycles.
Concentration	Batch dependent (Please refer to the vial label for the specific concentration.)
Immunogen	A synthetic peptide corresponding to a sequence within amino acids 1-100 of human CLDN18.2 (P56856-2).
Purification	Purified by affinity chromatography
Conjugation	Unconjugated

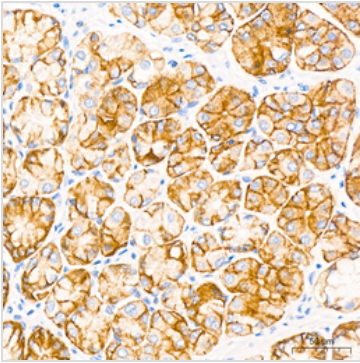
Note For laboratory research use only. Not for any clinical, therapeutic, or diagnostic use in humans or animals. Not for animal or human consumption.

Purchasers shall not, and agree not to enable third parties to, analyze, copy, reverse engineer or otherwise attempt to determine the structure or sequence of the product.



For full product information, images and publications, please visit our [website](#).

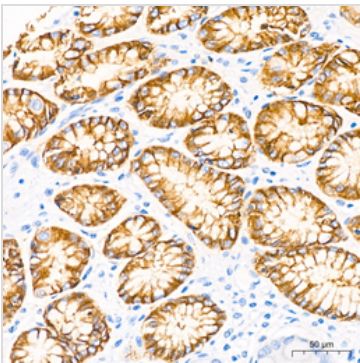
DATA IMAGES

**GTX04575 IHC-P Image**

IHC-P analysis of human stomach tissue using GTX04575 Claudin 18.2 antibody [ARC5062-02].

Antigen retrieval : 10 mM Tris/EDTA buffer, pH 9.0

Dilution : 1:50

**GTX04575 IHC-P Image**

IHC-P analysis of human stomach tissue using GTX04575 Claudin 18.2 antibody [ARC5062-02].

Antigen retrieval : 10 mM Tris/EDTA buffer, pH 9.0

Dilution : 1:50



For full product information, images and publications, please visit our [website](#).