



SZABO SCANDIC

Part of Europa Biosite

Produktinformation



Forschungsprodukte & Biochemikalien



Zellkultur & Verbrauchsmaterial



Diagnostik & molekulare Diagnostik



Laborgeräte & Service

Weitere Information auf den folgenden Seiten!
See the following pages for more information!



Lieferung & Zahlungsart

siehe unsere [Liefer- und Versandbedingungen](#)

Zuschläge

- Mindermengenzuschlag
- Trockeneiszuschlag
- Gefahrgutzuschlag
- Expressversand

SZABO-SCANDIC HandelsgmbH

Quellenstraße 110, A-1100 Wien

T. +43(0)1 489 3961-0

F. +43(0)1 489 3961-7

mail@szabo-scandic.com

www.szabo-scandic.com

[linkedin.com/company/szaboscandic](https://www.linkedin.com/company/szaboscandic) 

NMUR1 antibody

Cat. No. GTX04577

Host	Rabbit
Clonality	Polyclonal
Isotype	IgG
Application	WB, IHC-Fr, FACS
Reactivity	Human, Mouse, Rat

Package
50 µl

APPLICATION

Application Note

*Optimal dilutions/concentrations should be determined by the researcher.

Suggested dilution	Recommended dilution
WB	Assay dependent
IHC-Fr	Assay dependent
FACS	Assay dependent

Not tested in other applications.

Calculated MW 48 kDa. ([Note](#))

PROPERTIES

Form	Liquid
Buffer	PBS pH 7.4, 1% BSA
Preservative	0.05% Sodium azide
Storage	Store as concentrated solution. Centrifuge briefly prior to opening vial. For short-term storage (1-2 weeks), store at 4°C. For long-term storage, aliquot and store at -20°C or below. Avoid multiple freeze-thaw cycles.
Concentration	0.8 mg/ml (Please refer to the vial label for the specific concentration.)
Immunogen	Peptide (C)DRLMWSMVSHWTDGLR, corresponding to amino acid residues 316 - 331 of rat NMUR1 (Accession Q9JJ15). Extracellular, 3rd loop.
Purification	Purified by antigen-affinity chromatography
Conjugation	Unconjugated

Note

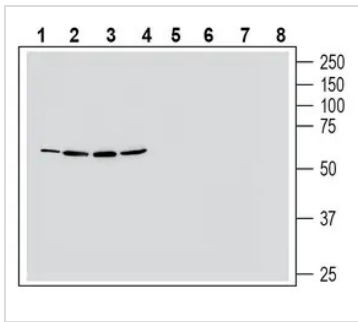
For laboratory research use only. Not for any clinical, therapeutic, or diagnostic use in humans or animals. Not for animal or human consumption.

Purchasers shall not, and agree not to enable third parties to, analyze, copy, reverse engineer or otherwise attempt to determine the structure or sequence of the product.



For full product information, images and publications, please visit our [website](#).

DATA IMAGES

**GTX04577 WB Image**

WB analysis of various samples using GTX04577 NMUR1 antibody prior incubated with (Lane 5-8) or without (Lane 1-4) blocking peptide.

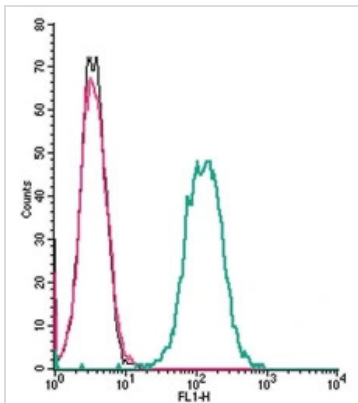
Lane 1 and 5 : HT-29 whole cell lysate

Lane 2 and 6 : Jurkat whole cell lysate

Lane 3 and 7 : K562 whole cell lysate

Lane 4 and 8 : NK-92 whole cell lysate

Dilution : 1:400

**GTX04577 FACS Image**

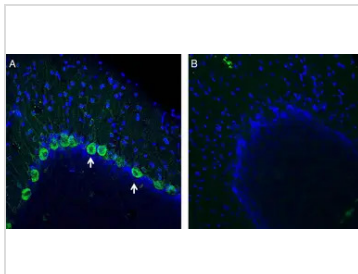
FACS analysis of J774 cells using GTX04577 NMUR1 antibody.

Green : Primary antibody

Red : Secondary antibody only

Black : Unlabeled cells

Dilution : 2.5 µg

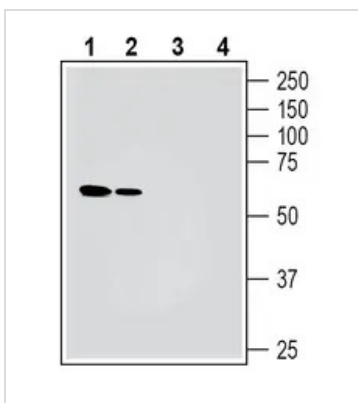
**GTX04577 IHC-Fr Image**

IHC-Fr analysis of rat brain tissue using GTX04577 NMUR1 antibody prior incubated with (Panel B) or without (Panel A) immunogen peptide. NMUR1 immunoreactivity appears in neuron profiles (arrows).

Green : Primary antibody

Blue : DAPI

Dilution : 1:300

**GTX04577 WB Image**

WB analysis of various samples using GTX04577 NMUR1 antibody prior incubated with (Lane 3-4) or without (Lane 1-2) blocking peptide.

Lane 1 and 3 : Mouse brain tissue lysate

Lane 2 and 4 : Rat brain tissue lysate

Dilution : 1:500



For full product information, images and publications, please visit our [website](#).