



SZABO SCANDIC

Part of Europa Biosite

Produktinformation



Forschungsprodukte & Biochemikalien



Zellkultur & Verbrauchsmaterial



Diagnostik & molekulare Diagnostik



Laborgeräte & Service

Weitere Information auf den folgenden Seiten!
See the following pages for more information!



Lieferung & Zahlungsart

siehe unsere [Liefer- und Versandbedingungen](#)

Zuschläge

- Mindermengenzuschlag
- Trockeneiszuschlag
- Gefahrgutzuschlag
- Expressversand

SZABO-SCANDIC HandelsgmbH

Quellenstraße 110, A-1100 Wien

T. +43(0)1 489 3961-0

F. +43(0)1 489 3961-7

mail@szabo-scandic.com

www.szabo-scandic.com

[linkedin.com/company/szaboscandic](https://www.linkedin.com/company/szaboscandic) 

CDC42 antibody

Cat. No. GTX04584

| | |
|-------------|------------------------|
| Host | Rabbit |
| Clonality | Polyclonal |
| Isotype | IgG |
| Application | WB, IHC-P, FACS, ELISA |
| Reactivity | Human, Mouse, Rat |

Package
100 µg

APPLICATION

Application Note

*Optimal dilutions/concentrations should be determined by the researcher.

| Suggested dilution | Recommended dilution |
|--------------------|------------------------------|
| WB | 0.1-0.5 µg/mL |
| IHC-P | 0.5-1 µg/mL |
| FACS | 1-3 µg/10 ⁶ cells |
| ELISA | 0.1-0.5 µg/mL |

Note : By heat

Not tested in other applications.

Calculated MW 21 kDa. ([Note](#))

PROPERTIES

| | |
|---------------|--|
| Form | Liquid |
| Buffer | 4 mg Trehalose, 0.9 mg NaCl, 0.2 mg Na ₂ HPO ₄ |
| Preservative | 0.05 mg sodium azide |
| Storage | Store as concentrated solution. Centrifuge briefly prior to opening vial. For short-term storage (1-2 weeks), store at 4°C. For long-term storage, aliquot and store at -20°C or below. Avoid multiple freeze-thaw cycles. |
| Concentration | 0.5 mg/ml (Please refer to the vial label for the specific concentration.) |
| Immunogen | E.coli-derived human CDC42 recombinant protein (Position: K16-C188). |
| Purification | Purified by antigen-affinity chromatography |
| Conjugation | Unconjugated |



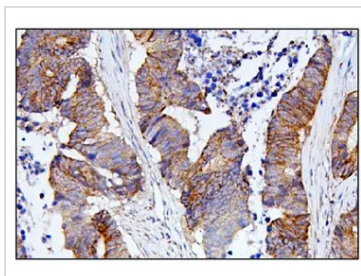
For full product information, images and publications, please visit our [website](#).

For laboratory research use only. Not for any clinical, therapeutic, or diagnostic use in humans or animals. Not for animal or human consumption.

Note

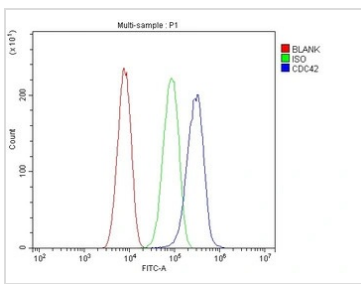
Purchasers shall not, and agree not to enable third parties to, analyze, copy, reverse engineer or otherwise attempt to determine the structure or sequence of the product.

DATA IMAGES



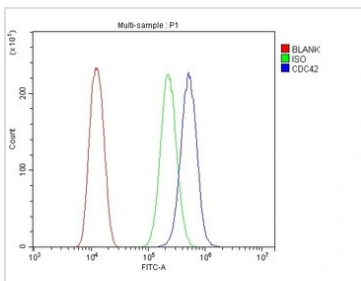
GTX04584 IHC-P Image

IHC-P analysis of human colon cancer tissue using GTX04584 CDC42 antibody.
 Antigen retrieval : Heat mediated EDTA buffer (pH 8.0)
 Dilution : 1 µg/mL



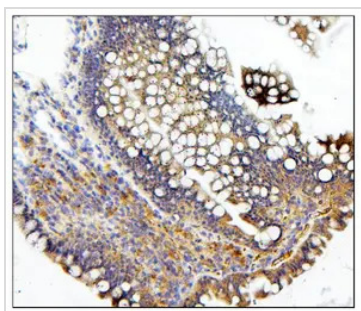
GTX04584 FACS Image

FACS analysis of SiHa cells using GTX04584 CDC42 antibody.
 Blue : Primary antibody
 Green : Isotype control
 Red : Unlabelled sample
 Dilution : 1 µg/10⁶ cells



GTX04584 FACS Image

FACS analysis of U2OS cells using GTX04584 CDC42 antibody.
 Blue : Primary antibody
 Green : Isotype control
 Red : Unlabelled sample
 Dilution : 1 µg/10⁶ cells



GTX04584 IHC-P Image

IHC-P analysis of rat intestine tissue using GTX04584 CDC42 antibody.
 Antigen retrieval : Heat mediated EDTA buffer (pH 8.0)
 Dilution : 1 µg/mL



For full product information, images and publications, please visit our [website](#).