



SZABO SCANDIC

Part of Europa Biosite

Produktinformation



Forschungsprodukte & Biochemikalien



Zellkultur & Verbrauchsmaterial



Diagnostik & molekulare Diagnostik



Laborgeräte & Service

Weitere Information auf den folgenden Seiten!
See the following pages for more information!



Lieferung & Zahlungsart

siehe unsere [Liefer- und Versandbedingungen](#)

Zuschläge

- Mindermengenzuschlag
- Trockeneiszuschlag
- Gefahrgutzuschlag
- Expressversand

SZABO-SCANDIC HandelsgmbH

Quellenstraße 110, A-1100 Wien

T. +43(0)1 489 3961-0

F. +43(0)1 489 3961-7

mail@szabo-scandic.com

www.szabo-scandic.com

[linkedin.com/company/szaboscandic](https://www.linkedin.com/company/szaboscandic) 

GCR2 antibody

Cat. No. GTX04585

Host	Rabbit
Clonality	Polyclonal
Isotype	IgG
Application	WB, ICC/IF, FACS, ELISA
Reactivity	Human

Package
100 µg

APPLICATION

Application Note

*Optimal dilutions/concentrations should be determined by the researcher.

Suggested dilution	Recommended dilution
WB	0.25-0.5 µg/mL
ICC/IF	5 µg/mL
FACS	1-3 µg/10 ⁶ cells
ELISA	0.1-0.5 µg/mL

Not tested in other applications.

Calculated MW 73 kDa. ([Note](#))

PROPERTIES

Form	Liquid
Buffer	4 mg Trehalose, 0.9 mg NaCl, 0.2 mg Na ₂ HPO ₄
Preservative	No preservatives
Storage	Store as concentrated solution. Centrifuge briefly prior to opening vial. For short-term storage (1-2 weeks), store at 4°C. For long-term storage, aliquot and store at -20°C or below. Avoid multiple freeze-thaw cycles.
Concentration	0.5 mg/ml (Please refer to the vial label for the specific concentration.)
Immunogen	E.coli-derived human SGT1/ECD recombinant protein (Position: L50-Q567).
Purification	Purified by antigen-affinity chromatography
Conjugation	Unconjugated

Note

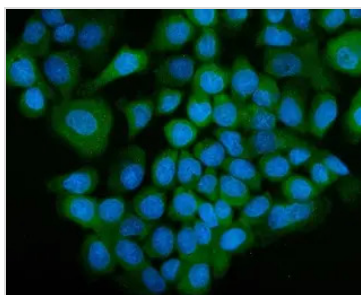
For laboratory research use only. Not for any clinical, therapeutic, or diagnostic use in humans or animals. Not for animal or human consumption.

Purchasers shall not, and agree not to enable third parties to, analyze, copy, reverse engineer or otherwise attempt to determine the structure or sequence of the product.



For full product information, images and publications, please visit our [website](#).

DATA IMAGES



GTX04585 ICC/IF Image

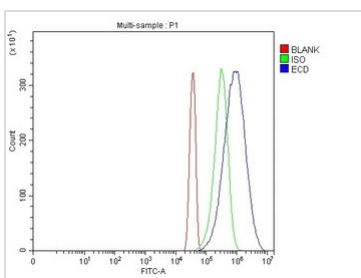
ICC/IF analysis of PFA fixed A431 cells using GTX04585 GCR2 antibody.

Antigen retrieval : Enzyme antigen retrieval was performed.

Green : Primary antibody

Blue : DAPI

Dilution : 5 µg/mL



GTX04585 FACS Image

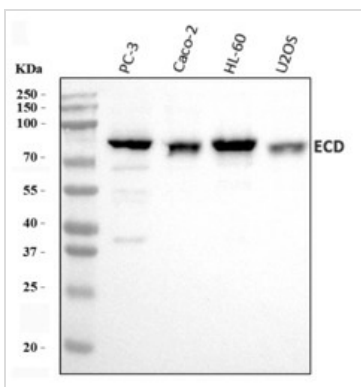
FACS analysis of HeLa cells using GTX04585 GCR2 antibody.

Blue : Primary antibody

Green : Isotype control

Red : Unlabelled sample

Dilution : 1 µg/10⁶ cells



GTX04585 WB Image

WB analysis of various cell lysates using GTX04585 GCR2 antibody.

Loading : 30 µg

Dilution : 0.5 µg/mL



For full product information, images and publications, please visit our [website](#).