



SZABO SCANDIC

Part of Europa Biosite

Produktinformation



Forschungsprodukte & Biochemikalien



Zellkultur & Verbrauchsmaterial



Diagnostik & molekulare Diagnostik



Laborgeräte & Service

Weitere Information auf den folgenden Seiten!
See the following pages for more information!



Lieferung & Zahlungsart

siehe unsere [Liefer- und Versandbedingungen](#)

Zuschläge

- Mindermengenzuschlag
- Trockeneiszuschlag
- Gefahrgutzuschlag
- Expressversand

SZABO-SCANDIC HandelsgmbH

Quellenstraße 110, A-1100 Wien

T. +43(0)1 489 3961-0

F. +43(0)1 489 3961-7

mail@szabo-scandic.com

www.szabo-scandic.com

[linkedin.com/company/szaboscandic](https://www.linkedin.com/company/szaboscandic) 

GABARAPL1 antibody [ARC61739]

Cat. No. GTX04586

Host	Rabbit
Clonality	Monoclonal
Isotype	IgG
Application	WB, IHC-P
Reactivity	Human, Mouse, Rat

Package
100 µl

APPLICATION

Application Note

*Optimal dilutions/concentrations should be determined by the researcher.

Suggested dilution	Recommended dilution
WB	1:1000-1:2000
IHC-P	1:100-1:500

Not tested in other applications.

Calculated MW 14 kDa. ([Note](#))

PROPERTIES

Form	Liquid
Buffer	PBS pH 7.3, 0.05% BSA, 50% glycerol
Preservative	0.05% proclin300
Storage	Store as concentrated solution. Centrifuge briefly prior to opening vial. For short-term storage (1-2 weeks), store at 4°C. For long-term storage, aliquot and store at -20°C or below. Avoid multiple freeze-thaw cycles.
Concentration	Batch dependent (Please refer to the vial label for the specific concentration.)
Immunogen	A synthesized peptide derived from human GABARAPL1.
Purification	Purified by affinity chromatography
Conjugation	Unconjugated

Note

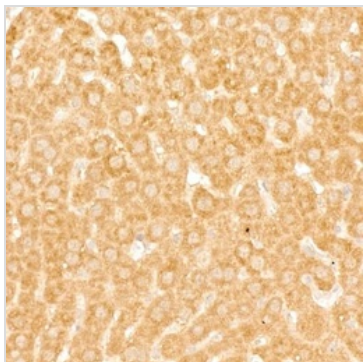
For laboratory research use only. Not for any clinical, therapeutic, or diagnostic use in humans or animals. Not for animal or human consumption.

Purchasers shall not, and agree not to enable third parties to, analyze, copy, reverse engineer or otherwise attempt to determine the structure or sequence of the product.



For full product information, images and publications, please visit our [website](#).

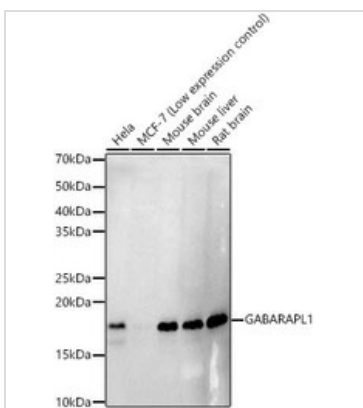
DATA IMAGES

**GTX04586 IHC-P Image**

IHC-P analysis of rat liver tissue using GTX04586 GABARPL1 antibody [ARC61739].

Antigen retrieval : 10 mM citrate buffer (pH 6.0)

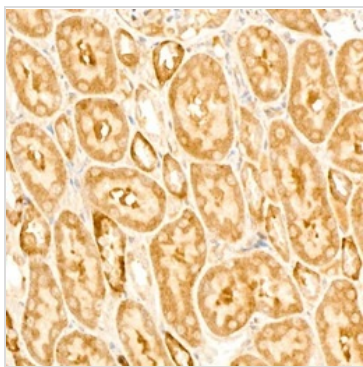
Dilution : 1:300

**GTX04586 WB Image**

WB analysis of various samples using GTX04586 GABARPL1 antibody [ARC61739].

Loading : 25 µg

Dilution : 1:2000

**GTX04586 IHC-P Image**

IHC-P analysis of rat kidney tissue using GTX04586 GABARPL1 antibody [ARC61739].

Antigen retrieval : 10 mM citrate buffer (pH 6.0)

Dilution : 1:300



For full product information, images and publications, please visit our [website](#).