



SZABO SCANDIC

Part of Europa Biosite

Produktinformation



Forschungsprodukte & Biochemikalien



Zellkultur & Verbrauchsmaterial



Diagnostik & molekulare Diagnostik



Laborgeräte & Service

Weitere Information auf den folgenden Seiten!
See the following pages for more information!



Lieferung & Zahlungsart

siehe unsere [Liefer- und Versandbedingungen](#)

Zuschläge

- Mindermengenzuschlag
- Trockeneiszuschlag
- Gefahrgutzuschlag
- Expressversand

SZABO-SCANDIC HandelsgmbH

Quellenstraße 110, A-1100 Wien

T. +43(0)1 489 3961-0

F. +43(0)1 489 3961-7

mail@szabo-scandic.com

www.szabo-scandic.com

[linkedin.com/company/szaboscandic](https://www.linkedin.com/company/szaboscandic) 

GCN2 (phospho Thr899) antibody

Cat. No. GTX04587

Host	Rabbit
Clonality	Polyclonal
Isotype	IgG
Application	WB, FACS
Reactivity	Human, Mouse

Package
100 µl

APPLICATION

Application Note

*Optimal dilutions/concentrations should be determined by the researcher.

Suggested dilution	Recommended dilution
WB	1:300-1:5000
FACS	1:20-1:100

Not tested in other applications.

Calculated MW 187 kDa. ([Note](#))**Product Note** This phosphorylation site is homologous to Thr898 in Mouse and Thr899 in Rat.

PROPERTIES

Form	Liquid
Buffer	0.01M TBS pH 7.4, 1% BSA, 50% Glycerol
Preservative	0.03% Proclin300
Storage	Store as concentrated solution. Centrifuge briefly prior to opening vial. For short-term storage (1-2 weeks), store at 4°C. For long-term storage, aliquot and store at -20°C or below. Avoid multiple freeze-thaw cycles.
Concentration	1 mg/ml (Please refer to the vial label for the specific concentration.)
Immunogen	KLH conjugated synthetic phosphopeptide derived from human GCN2 around the phosphorylation site of Thr899.
Purification	Protein A purified
Conjugation	Unconjugated

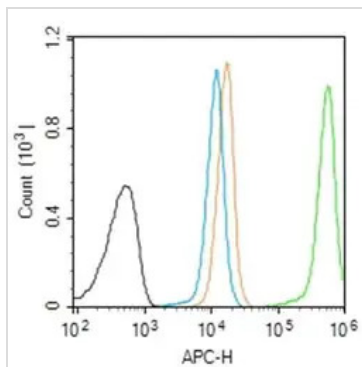
Note

For laboratory research use only. Not for any clinical, therapeutic, or diagnostic use in humans or animals. Not for animal or human consumption.

Purchasers shall not, and agree not to enable third parties to, analyze, copy, reverse engineer or otherwise attempt to determine the structure or sequence of the product.



For full product information, images and publications, please visit our [website](#).

DATA IMAGES

GTX04587 FACS Image

FACS analysis of 4% PFA-fixed Molt-4 cells using GTX04587 GCN2 (phospho Thr899) antibody.

Green : Primary antibody

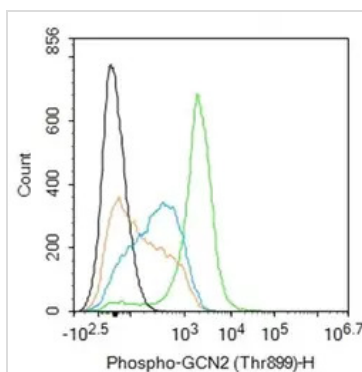
Orange : Isotype control

Blue : Secondary antibody only

Black : Unlabeled cells

Permeabilization : 90% ice-cold methanol

Dilution : 1:50


GTX04587 FACS Image

FACS analysis of 4% PFA-fixed mouse spleen cells using GTX04587 GCN2 (phospho Thr899) antibody.

Green : Primary antibody

Orange : Isotype control

Blue : Secondary antibody only

Black : Unlabeled cells

Permeabilization : 0.1% PBST

Dilution : 1:50



For full product information, images and publications, please visit our [website](#).