



# SZABO SCANDIC

Part of Europa Biosite

## Produktinformation



Forschungsprodukte & Biochemikalien



Zellkultur & Verbrauchsmaterial



Diagnostik & molekulare Diagnostik



Laborgeräte & Service

Weitere Information auf den folgenden Seiten!  
See the following pages for more information!



### Lieferung & Zahlungsart

siehe unsere [Liefer- und Versandbedingungen](#)

### Zuschläge

- Mindermengenzuschlag
- Trockeneiszuschlag
- Gefahrgutzuschlag
- Expressversand

### SZABO-SCANDIC HandelsgmbH

Quellenstraße 110, A-1100 Wien

T. +43(0)1 489 3961-0

F. +43(0)1 489 3961-7

[mail@szabo-scandic.com](mailto:mail@szabo-scandic.com)

[www.szabo-scandic.com](http://www.szabo-scandic.com)

[linkedin.com/company/szaboscandic](https://www.linkedin.com/company/szaboscandic) 

## GCN2 (phospho Thr899) antibody

Cat. No. GTX04588

Host	Rabbit
Clonality	Polyclonal
Isotype	IgG
Application	WB, IHC-P, ELISA
Reactivity	Human, Mouse, Rat

Package  
100 µl

## APPLICATION

## Application Note

\*Optimal dilutions/concentrations should be determined by the researcher.

Suggested dilution	Recommended dilution
WB	1:1000-1:3000
IHC-P	1:50-1:200
ELISA	Assay dependent

Not tested in other applications.

Calculated MW 187 kDa. ([Note](#))

## PROPERTIES

Form	Liquid
Buffer	PBS pH 7.4, 150 mM NaCl, 50% glycerol
Preservative	0.02% sodium azide
Storage	Store as concentrated solution. Centrifuge briefly prior to opening vial. For short-term storage (1-2 weeks), store at 4°C. For long-term storage, aliquot and store at -20°C or below. Avoid multiple freeze-thaw cycles.
Concentration	1 mg/ml (Please refer to the vial label for the specific concentration.)
Immunogen	A synthesized peptide derived from human EIF2AK4(Accession Q9P2K8), corresponding to amino acid residues around phosphorylated Thr899.
Purification	Purified by affinity purification via sequential chromatography on phospho-peptide and non-phospho-peptide affinity columns. From serum
Conjugation	Unconjugated



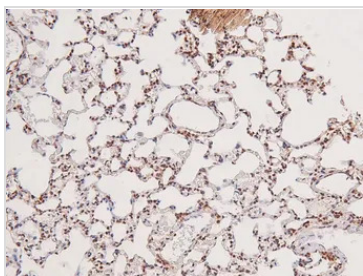
For full product information, images and publications, please visit our [website](#).

For laboratory research use only. Not for any clinical, therapeutic, or diagnostic use in humans or animals. Not for animal or human consumption.

**Note**

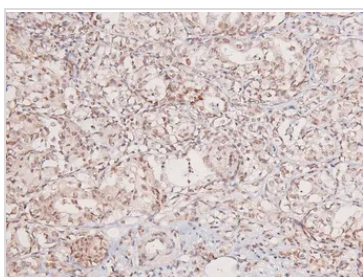
Purchasers shall not, and agree not to enable third parties to, analyze, copy, reverse engineer or otherwise attempt to determine the structure or sequence of the product.

DATA IMAGES



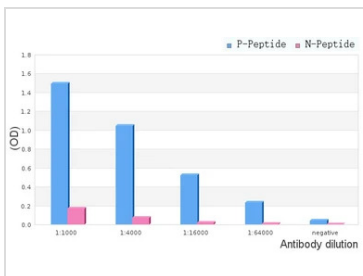
**GTX04588 IHC-P Image**

IHC-P analysis of rat lung tissue using GTX04588 GCN2 (phospho Thr899) antibody.  
 Antigen retrieval : Heat mediated citrate buffer  
 Dilution : 1:200



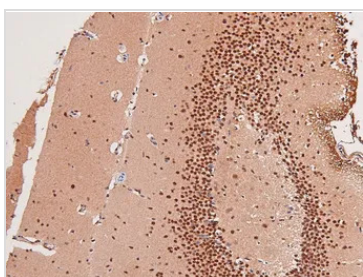
**GTX04588 IHC-P Image**

IHC-P analysis of human liver cancer tissue using GTX04588 GCN2 (phospho Thr899) antibody.  
 Antigen retrieval : Heat mediated citrate buffer  
 Dilution : 1:200



**GTX04588 ELISA Image**

ELISA analysis of phospho- and non phospho- immunogen peptide using serial diluted GTX04588 GCN2 (phospho Thr899) antibody.  
 P-peptide : phospho-peptide  
 N-peptide : non-phospho-peptide  
 Peptides concentration : 1 µg/mL



**GTX04588 IHC-P Image**

IHC-P analysis of mouse brain tissue using GTX04588 GCN2 (phospho Thr899) antibody.  
 Antigen retrieval : Heat mediated citrate buffer  
 Dilution : 1:200



For full product information, images and publications, please visit our [website](#).