



SZABO SCANDIC

Part of Europa Biosite

Produktinformation



Forschungsprodukte & Biochemikalien



Zellkultur & Verbrauchsmaterial



Diagnostik & molekulare Diagnostik



Laborgeräte & Service

Weitere Information auf den folgenden Seiten!
See the following pages for more information!



Lieferung & Zahlungsart

siehe unsere [Liefer- und Versandbedingungen](#)

Zuschläge

- Mindermengenzuschlag
- Trockeneiszuschlag
- Gefahrgutzuschlag
- Expressversand

SZABO-SCANDIC HandelsgmbH

Quellenstraße 110, A-1100 Wien

T. +43(0)1 489 3961-0

F. +43(0)1 489 3961-7

mail@szabo-scandic.com

www.szabo-scandic.com

[linkedin.com/company/szaboscandic](https://www.linkedin.com/company/szaboscandic) 

ASAP1 antibody

Cat. No. GTX04589

Host	Rabbit
Clonality	Polyclonal
Isotype	IgG
Application	WB, ICC/IF, IHC-P
Reactivity	Human, Mouse, Rat

Package
100 µl

APPLICATION

Application Note

*Optimal dilutions/concentrations should be determined by the researcher.

Suggested dilution	Recommended dilution
WB	1:1000-1:3000
ICC/IF	1:100-1:500
IHC-P	1:50-1:200

Not tested in other applications.

Calculated MW 125 kDa. ([Note](#))

PROPERTIES

Form	Liquid
Buffer	PBS pH 7.4, 150 mM NaCl, 50% glycerol
Preservative	0.02% sodium azide
Storage	Store as concentrated solution. Centrifuge briefly prior to opening vial. For short-term storage (1-2 weeks), store at 4°C. For long-term storage, aliquot and store at -20°C or below. Avoid multiple freeze-thaw cycles.
Concentration	1 mg/ml (Please refer to the vial label for the specific concentration.)
Immunogen	A synthesized peptide derived from human ASAP1(Accession Q9ULH1), corresponding to amino acid residues K508-S558.
Purification	Purified by antigen-affinity chromatography From serum
Conjugation	Unconjugated

Note

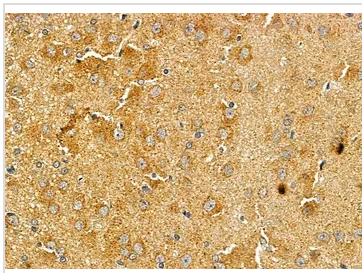
For laboratory research use only. Not for any clinical, therapeutic, or diagnostic use in humans or animals. Not for animal or human consumption.

Purchasers shall not, and agree not to enable third parties to, analyze, copy, reverse engineer or otherwise attempt to determine the structure or sequence of the product.



For full product information, images and publications, please visit our [website](#).

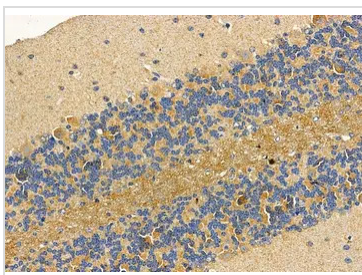
DATA IMAGES

**GTX04589 IHC-P Image**

IHC-P analysis of rat brain tissue using GTX04589 ASAP1 antibody.

Antigen retrieval : Heat mediated citrate buffer

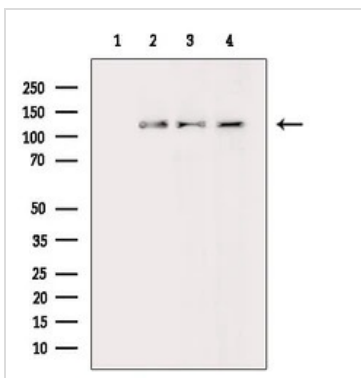
Dilution : 1:100

**GTX04589 IHC-P Image**

IHC-P analysis of mouse brain tissue using GTX04589 ASAP1 antibody.

Antigen retrieval : Heat mediated citrate buffer

Dilution : 1:100

**GTX04589 WB Image**

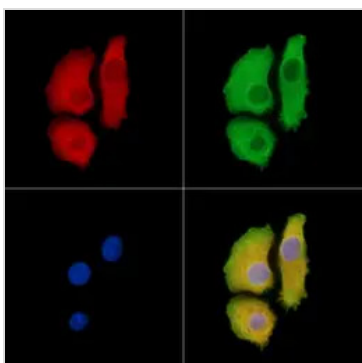
WB analysis of various samples using GTX04589 ASAP1 antibody.

Lane 1 : Mouse brain tissue lysate blocked with antigen-specific peptides

Lane 2 : Mouse brain tissue lysate

Lane 3 : 3T3 cells with LPS treatment

Raw264.7 cells with H₂O₂ treatment

**GTX04589 ICC/IF Image**

ICC/IF analysis of PFA-fixed HeLa cells using GTX04589 ASAP1 antibody.

Red : Primary antibody

Green : Beta-tubulin

Blue : DAPI

Permeabilization : 0.1% Triton X-100



For full product information, images and publications, please visit our [website](#).