



# SZABO SCANDIC

Part of Europa Biosite

## Produktinformation



Forschungsprodukte & Biochemikalien



Zellkultur & Verbrauchsmaterial



Diagnostik & molekulare Diagnostik



Laborgeräte & Service

Weitere Information auf den folgenden Seiten!  
See the following pages for more information!



### Lieferung & Zahlungsart

siehe unsere [Liefer- und Versandbedingungen](#)

### Zuschläge

- Mindermengenzuschlag
- Trockeneiszuschlag
- Gefahrgutzuschlag
- Expressversand

### SZABO-SCANDIC HandelsgmbH

Quellenstraße 110, A-1100 Wien

T. +43(0)1 489 3961-0

F. +43(0)1 489 3961-7

[mail@szabo-scandic.com](mailto:mail@szabo-scandic.com)

[www.szabo-scandic.com](http://www.szabo-scandic.com)

[linkedin.com/company/szaboscandic](https://www.linkedin.com/company/szaboscandic) 

## PPP2R5D antibody [ARC2981]

**Cat. No. GTX04590**

<b>Host</b>	Rabbit
<b>Clonality</b>	Monoclonal
<b>Isotype</b>	IgG
<b>Application</b>	WB, IHC-P
<b>Reactivity</b>	Human, Mouse, Rat

**Package**  
100 µl

## APPLICATION

**Application Note**

\*Optimal dilutions/concentrations should be determined by the researcher.

Suggested dilution	Recommended dilution
WB	1:500-1:1000
IHC-P	1:50-1:200

Not tested in other applications.

**Calculated MW** 70 kDa. ([Note](#))

## PROPERTIES

<b>Form</b>	Liquid
<b>Buffer</b>	PBS pH 7.3, 0.05% BSA, 50% glycerol
<b>Preservative</b>	0.02% sodium azide
<b>Storage</b>	Store as concentrated solution. Centrifuge briefly prior to opening vial. For short-term storage (1-2 weeks), store at 4°C. For long-term storage, aliquot and store at -20°C or below. Avoid multiple freeze-thaw cycles.
<b>Concentration</b>	Batch dependent (Please refer to the vial label for the specific concentration.)
<b>Immunogen</b>	Recombinant protein of Human PPP2R5D.
<b>Purification</b>	Purified by affinity chromatography
<b>Conjugation</b>	Unconjugated

**Note**

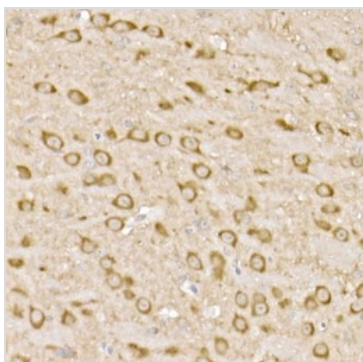
For laboratory research use only. Not for any clinical, therapeutic, or diagnostic use in humans or animals. Not for animal or human consumption.

Purchasers shall not, and agree not to enable third parties to, analyze, copy, reverse engineer or otherwise attempt to determine the structure or sequence of the product.



For full product information, images and publications, please visit our [website](#).

DATA IMAGES

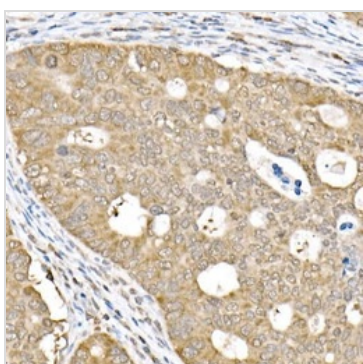


**GTX04590 IHC-P Image**

IHC-P analysis of mouse brain tissue using GTX04590 PPP2R5D antibody [ARC2981].

Antigen retrieval : 10 mM citrate buffer pH 6.0

Dilution : 1:20

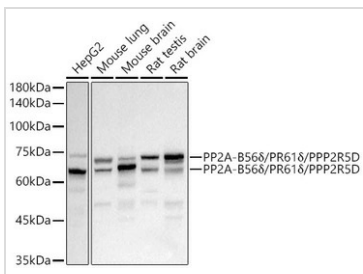


**GTX04590 IHC-P Image**

IHC-P analysis of human colon carcinoma tissue using GTX04590 PPP2R5D antibody [ARC2981].

Antigen retrieval : 10 mM citrate buffer pH 6.0

Dilution : 1:20

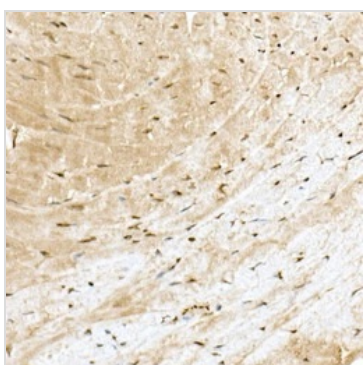


**GTX04590 WB Image**

WB analysis of various samples using GTX04590 PPP2R5D antibody [ARC2981].

Loading : 25 µg

Dilution : 1:1000



**GTX04590 IHC-P Image**

IHC-P analysis of mouse heart tissue using GTX04590 PPP2R5D antibody [ARC2981].

Antigen retrieval : 10 mM citrate buffer pH 6.0

Dilution : 1:20



For full product information, images and publications, please visit our [website](#).