



# SZABO SCANDIC

Part of Europa Biosite

## Produktinformation



Forschungsprodukte & Biochemikalien



Zellkultur & Verbrauchsmaterial



Diagnostik & molekulare Diagnostik



Laborgeräte & Service

Weitere Information auf den folgenden Seiten!  
See the following pages for more information!



### Lieferung & Zahlungsart

siehe unsere [Liefer- und Versandbedingungen](#)

### Zuschläge

- Mindermengenzuschlag
- Trockeneiszuschlag
- Gefahrgutzuschlag
- Expressversand

### SZABO-SCANDIC HandelsgmbH

Quellenstraße 110, A-1100 Wien

T. +43(0)1 489 3961-0

F. +43(0)1 489 3961-7

[mail@szabo-scandic.com](mailto:mail@szabo-scandic.com)

[www.szabo-scandic.com](http://www.szabo-scandic.com)

[linkedin.com/company/szaboscandic](https://www.linkedin.com/company/szaboscandic) 

## PKC beta 1 (phospho Ser661) antibody

**Cat. No. GTX04594**

<b>Host</b>	Rabbit
<b>Clonality</b>	Polyclonal
<b>Isotype</b>	IgG
<b>Application</b>	WB
<b>Reactivity</b>	Human

**Package**  
100 µl

## APPLICATION

**Application Note**

\*Optimal dilutions/concentrations should be determined by the researcher.

**Suggested dilution**                      **Recommended dilution**

WB                                              1:500-1:1000

Not tested in other applications.

**Calculated MW**                      77 kDa. ([Note](#))

## PROPERTIES

**Form**                                      Liquid**Buffer**                                      PBS pH 7.4 (without Mg<sup>2+</sup> and Ca<sup>2+</sup>), 150 mM NaCl, 50% glycerol**Preservative**                              0.02% sodium azide**Storage**                                      Store as concentrated solution. Centrifuge briefly prior to opening vial. For short-term storage (1-2 weeks), store at 4°C. For long-term storage, aliquot and store at -20°C or below. Avoid multiple freeze-thaw cycles.**Concentration**                              1 mg/ml (Please refer to the vial label for the specific concentration.)**Immunogen**                                      Peptide sequence around phosphorylation site of serine 661 (G-F-S(p)-Y-T) derived from Human PKCB.**Purification**                                      Purified by affinity purification via sequential chromatography on phospho-peptide and non-phospho-peptide affinity columns.**Conjugation**                                      Unconjugated**Note**

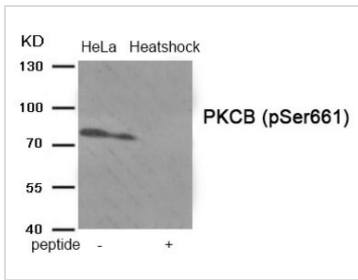
For laboratory research use only. Not for any clinical, therapeutic, or diagnostic use in humans or animals. Not for animal or human consumption.

Purchasers shall not, and agree not to enable third parties to, analyze, copy, reverse engineer or otherwise attempt to determine the structure or sequence of the product.



For full product information, images and publications, please visit our [website](#).

## DATA IMAGES

**GTX04594 WB Image**

WB analysis of HeLa whole cell lysate with/without heat shock treatment using GTX04594 PKC beta 1 (phospho Ser661) antibody. The lane on the right is treated with the antigen-specific peptide.



For full product information, images and publications, please visit our [website](#).