



# SZABO SCANDIC

Part of Europa Biosite

## Produktinformation



Forschungsprodukte & Biochemikalien



Zellkultur & Verbrauchsmaterial



Diagnostik & molekulare Diagnostik



Laborgeräte & Service

Weitere Information auf den folgenden Seiten!  
See the following pages for more information!



### Lieferung & Zahlungsart

siehe unsere [Liefer- und Versandbedingungen](#)

### Zuschläge

- Mindermengenzuschlag
- Trockeneiszuschlag
- Gefahrgutzuschlag
- Expressversand

### SZABO-SCANDIC HandelsgmbH

Quellenstraße 110, A-1100 Wien

T. +43(0)1 489 3961-0

F. +43(0)1 489 3961-7

[mail@szabo-scandic.com](mailto:mail@szabo-scandic.com)

[www.szabo-scandic.com](http://www.szabo-scandic.com)

[linkedin.com/company/szaboscandic](https://www.linkedin.com/company/szaboscandic) 

## LIPT1 antibody

**Cat. No. GTX04597**

|                    |            |
|--------------------|------------|
| <b>Host</b>        | Rabbit     |
| <b>Clonality</b>   | Polyclonal |
| <b>Isotype</b>     | IgG        |
| <b>Application</b> | WB         |
| <b>Reactivity</b>  | Human      |

**Package**  
100 µl

## APPLICATION

**Application Note**

\*Optimal dilutions/concentrations should be determined by the researcher.

| Suggested dilution                | Recommended dilution |
|-----------------------------------|----------------------|
| WB                                | Assay dependent      |
| Not tested in other applications. |                      |

**Calculated MW** 42 kDa. ([Note](#))

## PROPERTIES

|                      |  |
|----------------------|--|
| <b>Form</b>          | Liquid   |
| <b>Buffer</b>        | PBS, 2% sucrose  |
| <b>Preservative</b>  | 0.09% sodium azide   |
| <b>Storage</b>       | Store as concentrated solution. Centrifuge briefly prior to opening vial. For short-term storage (1-2 weeks), store at 4°C. For long-term storage, aliquot and store at -20°C or below. Avoid multiple freeze-thaw cycles. |
| <b>Concentration</b> | 0.5 mg/ml (Please refer to the vial label for the specific concentration.)   |
| <b>Immunogen</b>     | The immunogen is a synthetic peptide directed towards the middle region of Human LIPT protein:<br>RALNAVQPQLDVQATKRFDLLLDGQFKISGTASKIGRTTAYHHCTLLCST   |
| <b>Purification</b>  | Purified by affinity chromatography  |
| <b>Conjugation</b>   | Unconjugated   |

**Note**

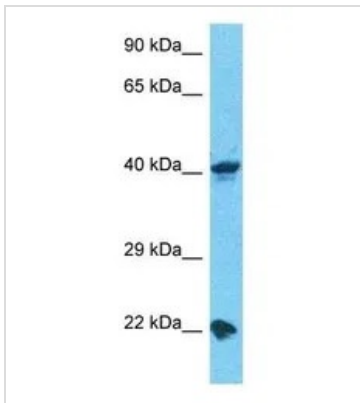
For laboratory research use only. Not for any clinical, therapeutic, or diagnostic use in humans or animals. Not for animal or human consumption.

Purchasers shall not, and agree not to enable third parties to, analyze, copy, reverse engineer or otherwise attempt to determine the structure or sequence of the product.



For full product information, images and publications, please visit our [website](#).

## DATA IMAGES

**GTX04597 WB Image**

WB analysis of COLO205 whole cell lysate using GTX04597 LIPT1 antibody.

Dilution : 1 µg/mL



For full product information, images and publications, please visit our [website](#).