



SZABO SCANDIC

Part of Europa Biosite

Produktinformation



Forschungsprodukte & Biochemikalien



Zellkultur & Verbrauchsmaterial



Diagnostik & molekulare Diagnostik



Laborgeräte & Service

Weitere Information auf den folgenden Seiten!
See the following pages for more information!



Lieferung & Zahlungsart

siehe unsere [Liefer- und Versandbedingungen](#)

Zuschläge

- Mindermengenzuschlag
- Trockeneiszuschlag
- Gefahrgutzuschlag
- Expressversand

SZABO-SCANDIC HandelsgmbH

Quellenstraße 110, A-1100 Wien

T. +43(0)1 489 3961-0

F. +43(0)1 489 3961-7

mail@szabo-scandic.com

www.szabo-scandic.com

[linkedin.com/company/szaboscandic](https://www.linkedin.com/company/szaboscandic) 

CEACAM6 antibody [B6.2]

Cat. No. GTX04601

Host	Mouse
Clonality	Monoclonal
Isotype	IgG1
Application	FACS, IP
Reactivity	Human

Package
100 µg

APPLICATION

Application Note

*Optimal dilutions/concentrations should be determined by the researcher.

Suggested dilution	Recommended dilution
FACS	3-12 µg/mL
IP	Assay dependent

Not tested in other applications.

Calculated MW 37 kDa. ([Note](#))

Product Note

The mouse monoclonal antibody B6.2 recognizes a conformationally dependent epitope of native CD66c, a GPI-anchored extracellular glycoprotein expressed on granulocytes and epithelial cells.

PROPERTIES

Form	Liquid
Buffer	PBS
Preservative	15 mM sodium azide
Storage	Store as concentrated solution. Centrifuge briefly prior to opening vial. Store at 4°C. DO NOT FREEZE.
Concentration	1 mg/ml (Please refer to the vial label for the specific concentration.)
Immunogen	Extracts from human breast carcinoma cells
Purification	Protein A purified
Conjugation	Unconjugated

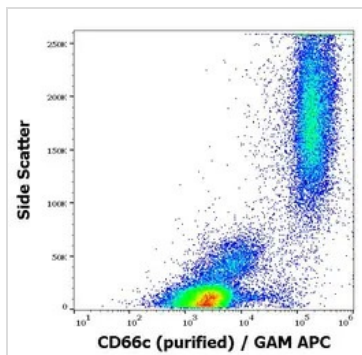
Note

For laboratory research use only. Not for any clinical, therapeutic, or diagnostic use in humans or animals. Not for animal or human consumption.

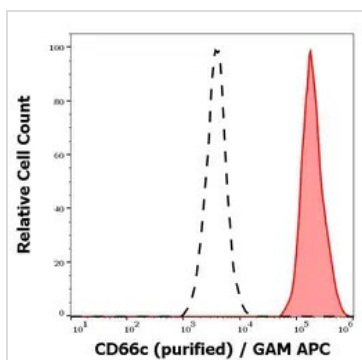
Purchasers shall not, and agree not to enable third parties to, analyze, copy, reverse engineer or otherwise attempt to determine the structure or sequence of the product.



For full product information, images and publications, please visit our [website](#).

DATA IMAGES

GTX04601 FACS Image

FACS analysis of human peripheral whole blood cells using GTX04601 CEACAM6 antibody [B6.2].
Dilution : 3 µg/mL


GTX04601 FACS Image

FACS analysis of human neutrophil granulocytes using GTX04601 CEACAM6 antibody [B6.2].
Red-filled : Primary antibody
Black-dashed : Unlabeled cells
Dilution : 3 µg/mL



For full product information, images and publications, please visit our [website](#).