



SZABO SCANDIC

Part of Europa Biosite

Produktinformation



Forschungsprodukte & Biochemikalien



Zellkultur & Verbrauchsmaterial



Diagnostik & molekulare Diagnostik



Laborgeräte & Service

Weitere Information auf den folgenden Seiten!
See the following pages for more information!



Lieferung & Zahlungsart

siehe unsere [Liefer- und Versandbedingungen](#)

Zuschläge

- Mindermengenzuschlag
- Trockeneiszuschlag
- Gefahrgutzuschlag
- Expressversand

SZABO-SCANDIC HandelsgmbH

Quellenstraße 110, A-1100 Wien

T. +43(0)1 489 3961-0

F. +43(0)1 489 3961-7

mail@szabo-scandic.com

www.szabo-scandic.com

[linkedin.com/company/szaboscandic](https://www.linkedin.com/company/szaboscandic) 

Adenosine A2a Receptor antibody

Cat. No. GTX04602

Host	Rabbit
Clonality	Polyclonal
Isotype	IgG
Application	WB, ICC/IF, IHC-P, IHC (Free Floating)
Reactivity	Human, Mouse, Rat

Package
50 µl

APPLICATION

Application Note

*Optimal dilutions/concentrations should be determined by the researcher.

Suggested dilution	Recommended dilution
WB	Assay dependent
ICC/IF	Assay dependent
IHC-P	Assay dependent
IHC (Free Floating)	Assay dependent

Not tested in other applications.

Calculated MW 45 kDa. ([Note](#))

PROPERTIES

Form	Liquid
Buffer	PBS pH 7.4, 1% BSA
Preservative	0.05% Sodium azide
Storage	Store as concentrated solution. Centrifuge briefly prior to opening vial. For short-term storage (1-2 weeks), store at 4°C. For long-term storage, aliquot and store at -20°C or below. Avoid multiple freeze-thaw cycles.
Concentration	0.75 mg/ml (Please refer to the vial label for the specific concentration.)
Immunogen	Peptide (C)RQLKQMESQPLPGER, corresponding to amino acid residues 201-215 of mouse adenosine A2a receptor (Accession Q60613).
Purification	Purified by antigen-affinity chromatography
Conjugation	Unconjugated



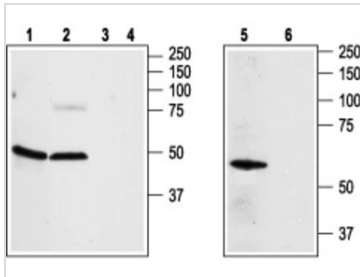
For full product information, images and publications, please visit our [website](#).

For laboratory research use only. Not for any clinical, therapeutic, or diagnostic use in humans or animals. Not for animal or human consumption.

Note

Purchasers shall not, and agree not to enable third parties to, analyze, copy, reverse engineer or otherwise attempt to determine the structure or sequence of the product.

DATA IMAGES



GTX04602 WB Image

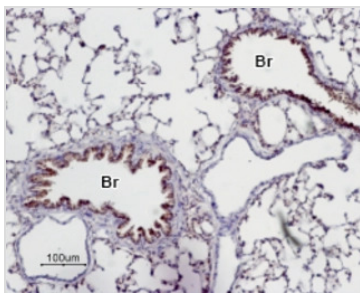
WB analysis of various samples using GTX04602 Adenosine A2a Receptor antibody prior incubated with (Lane 3, 4, 6) or without (Lane 1, 2, 5) blocking peptide.

Lane 1 and 3 : Rat aortic endothelial cells

Lane 2 and 4 : Rat brain tissue lysate

Lane 5 and 6 : Jurkat whole cell lysate

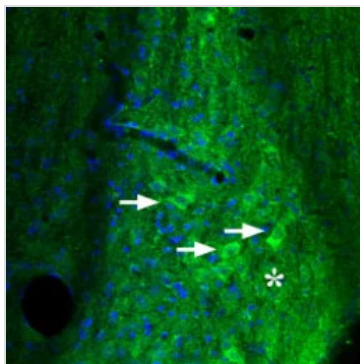
Dilution : 1:200



GTX04602 IHC-P Image

IHC-P analysis of rat lung tissue using GTX04602 Adenosine A2a Receptor antibody. The target signal is expressed in the respiratory epithelium of the bronchioli (Br). And the smooth muscle and endothelium in blood vessels are negative.

Dilution : 1:50



GTX04602 IHC (Free Floating) Image

IHC (Free floating) analysis of mouse diagonal band using GTX04602 Adenosine A2a Receptor antibody.

The target signal appears in the broca of individual neurons (arrows) and in neuropil (asterisk).

Green : Primary antibody

Blue : DAPI



For full product information, images and publications, please visit our [website](#).