



SZABO SCANDIC

Part of Europa Biosite

Produktinformation



Forschungsprodukte & Biochemikalien



Zellkultur & Verbrauchsmaterial



Diagnostik & molekulare Diagnostik



Laborgeräte & Service

Weitere Information auf den folgenden Seiten!
See the following pages for more information!



Lieferung & Zahlungsart

siehe unsere [Liefer- und Versandbedingungen](#)

Zuschläge

- Mindermengenzuschlag
- Trockeneiszuschlag
- Gefahrgutzuschlag
- Expressversand

SZABO-SCANDIC HandelsgmbH

Quellenstraße 110, A-1100 Wien

T. +43(0)1 489 3961-0

F. +43(0)1 489 3961-7

mail@szabo-scandic.com

www.szabo-scandic.com

[linkedin.com/company/szaboscandic](https://www.linkedin.com/company/szaboscandic) 

Adenosine A2b Receptor antibody

Cat. No. GTX04603

Host	Rabbit
Clonality	Polyclonal
Isotype	IgG
Application	WB, ICC/IF, IHC-P, FACS
Reactivity	Human, Mouse, Rat

Package
50 µl

APPLICATION

Application Note

*Optimal dilutions/concentrations should be determined by the researcher.

Suggested dilution	Recommended dilution
WB	Assay dependent
ICC/IF	Assay dependent
IHC-P	Assay dependent
FACS	Assay dependent

Not tested in other applications.

Calculated MW 36 kDa. ([Note](#))

PROPERTIES

Form	Liquid
Buffer	PBS pH 7.4, 1% BSA
Preservative	0.05% Sodium azide
Storage	Store as concentrated solution. Centrifuge briefly prior to opening vial. For short-term storage (1-2 weeks), store at 4°C. For long-term storage, aliquot and store at -20°C or below. Avoid multiple freeze-thaw cycles.
Concentration	0.75 mg/ml (Please refer to the vial label for the specific concentration.)
Immunogen	Peptide KDSATNN*STEPWDGTTNESC, corresponding to amino acid residues 147-166 of human A2BAR with replacement of cysteine 154 (C154) with serine (*S) (Accession P29275).
Purification	Purified by antigen-affinity chromatography
Conjugation	Unconjugated

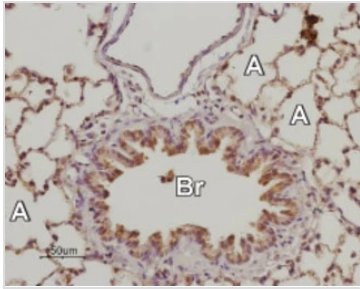


For full product information, images and publications, please visit our [website](#).

For laboratory research use only. Not for any clinical, therapeutic, or diagnostic use in humans or animals. Not for animal or human consumption.

Note
 Purchasers shall not, and agree not to enable third parties to, analyze, copy, reverse engineer or otherwise attempt to determine the structure or sequence of the product.

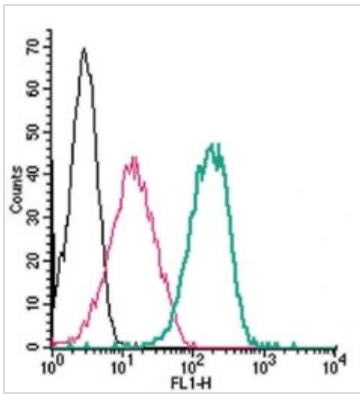
DATA IMAGES



GTX04603 IHC-P Image

IHC-P analysis of rat lung tissue using GTX04603 Adenosine A2b Receptor antibody. Staining is present in the respiratory epithelium of the bronchiole (Br) as well as in the pneumonocytes of the alveolar wall (alveoli, A).

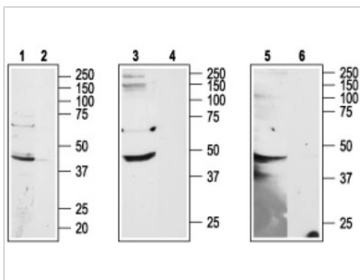
Dilution : 1:50



GTX04603 FACS Image

FACS analysis of the live intact THP-1 cells using GTX04603 Adenosine A2b Receptor antibody.

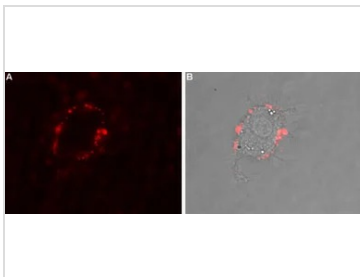
Green : Primary antibody
 Pink : Secondary antibody only
 Black : Unlabeled cells
 Dilution : 2.5 µg



GTX04603 WB Image

WB analysis of various samples using GTX04603 Adenosine A2b Receptor antibody prior incubated with (Lane 2, 4, 6) or without (Lane 1, 3, 5) blocking peptide.

Lane 1 and 2 : HL-60 whole cell lysate
 Lane 3 and 4 : Rat brain tissue lysate
 Lane 5 and 6 : Mouse brain tissue lysate
 Dilution : 1:200



GTX04603 ICC/IF Image

ICC/IF analysis of PC12 cells using GTX04603 Adenosine A2b Receptor antibody.

Panel A : Extracellular staining of cells
 Panel B : Merge of A and live view of the cells
 Dilution : 1:100



For full product information, images and publications, please visit our [website](#).