



SZABO SCANDIC

Part of Europa Biosite

Produktinformation



Forschungsprodukte & Biochemikalien



Zellkultur & Verbrauchsmaterial



Diagnostik & molekulare Diagnostik



Laborgeräte & Service

Weitere Information auf den folgenden Seiten!
See the following pages for more information!



Lieferung & Zahlungsart

siehe unsere [Liefer- und Versandbedingungen](#)

Zuschläge

- Mindermengenzuschlag
- Trockeneiszuschlag
- Gefahrgutzuschlag
- Expressversand

SZABO-SCANDIC HandelsgmbH

Quellenstraße 110, A-1100 Wien

T. +43(0)1 489 3961-0

F. +43(0)1 489 3961-7

mail@szabo-scandic.com

www.szabo-scandic.com

[linkedin.com/company/szaboscandic](https://www.linkedin.com/company/szaboscandic) 

Adenosine A3 Receptor antibody

Cat. No. GTX04605

Host	Rabbit
Clonality	Polyclonal
Isotype	IgG
Application	WB, ICC/IF, IHC-P
Reactivity	Human, Rat

Package
50 µl

APPLICATION

Application Note

*Optimal dilutions/concentrations should be determined by the researcher.

Suggested dilution	Recommended dilution
WB	Assay dependent
ICC/IF	Assay dependent
IHC-P	Assay dependent

Not tested in other applications.

Calculated MW 36 kDa. ([Note](#))

PROPERTIES

Form	Liquid
Buffer	PBS pH 7.4, 1% BSA
Preservative	0.05% Sodium azide
Storage	Store as concentrated solution. Centrifuge briefly prior to opening vial. For short-term storage (1-2 weeks), store at 4°C. For long-term storage, aliquot and store at -20°C or below. Avoid multiple freeze-thaw cycles.
Concentration	0.8 mg/ml (Please refer to the vial label for the specific concentration.)
Immunogen	Peptide (C)KETGAFYGREFKTAK, corresponding to amino acid residues 216-230 of human A3AR (Accession P0DMS8).
Purification	Purified by antigen-affinity chromatography
Conjugation	Unconjugated

Note

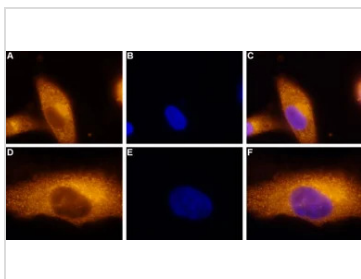
For laboratory research use only. Not for any clinical, therapeutic, or diagnostic use in humans or animals. Not for animal or human consumption.

Purchasers shall not, and agree not to enable third parties to, analyze, copy, reverse engineer or otherwise attempt to determine the structure or sequence of the product.



For full product information, images and publications, please visit our [website](#).

DATA IMAGES



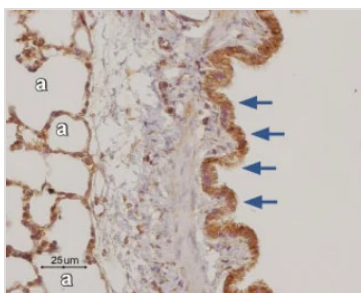
GTX04605 ICC/IF Image

ICC/IF analysis of PFA-fixed A2058 cells using GTX04605 Adenosine A3 Receptor antibody.

Orange : Primary antibody

Blue : Hoechst 33342

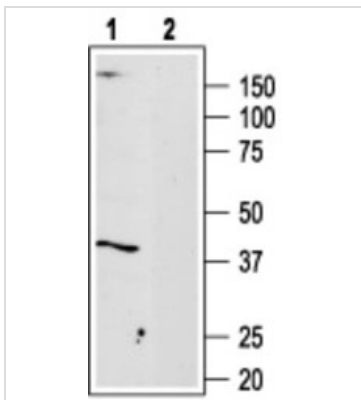
Dilution : 1:100



GTX04605 IHC-P Image

IHC-P analysis of rat lung tissue using GTX04605 Adenosine A3 Receptor antibody. Staining is specific for respiratory epithelial cells of the bronchiole (arrows) and pneumonocytes in the alveolar wall (a).

Dilution : 1:50



GTX04605 WB Image

WB analysis of Malme-3M whole cell lysate using GTX04605 Adenosine A3 Receptor antibody. The lane on the right was treated with blocking peptide.

Dilution : 1:200



For full product information, images and publications, please visit our [website](#).