



SZABO SCANDIC

Part of Europa Biosite

Produktinformation



Forschungsprodukte & Biochemikalien



Zellkultur & Verbrauchsmaterial



Diagnostik & molekulare Diagnostik



Laborgeräte & Service

Weitere Information auf den folgenden Seiten!
See the following pages for more information!



Lieferung & Zahlungsart

siehe unsere [Liefer- und Versandbedingungen](#)

Zuschläge

- Mindermengenzuschlag
- Trockeneiszuschlag
- Gefahrgutzuschlag
- Expressversand

SZABO-SCANDIC HandelsgmbH

Quellenstraße 110, A-1100 Wien

T. +43(0)1 489 3961-0

F. +43(0)1 489 3961-7

mail@szabo-scandic.com

www.szabo-scandic.com

[linkedin.com/company/szaboscandic](https://www.linkedin.com/company/szaboscandic) 

Pannexin 1 antibody

Cat. No. GTX04619

Host	Rabbit
Clonality	Polyclonal
Isotype	IgG
Application	WB, IHC (Free Floating)
Reactivity	Human, Mouse, Rat

Package
50 µl

APPLICATION

Application Note

*Optimal dilutions/concentrations should be determined by the researcher.

Suggested dilution	Recommended dilution
WB	Assay dependent
IHC (Free Floating)	Assay dependent

Not tested in other applications.

Calculated MW 48 kDa. ([Note](#))

PROPERTIES

Form	Liquid
Buffer	PBS, 1% BSA
Preservative	0.05% Sodium azide
Storage	Store as concentrated solution. Centrifuge briefly prior to opening vial. For short-term storage (1-2 weeks), store at 4°C. For long-term storage, aliquot and store at -20°C or below. Avoid multiple freeze-thaw cycles.
Concentration	0.8 mg/ml (Please refer to the vial label for the specific concentration.)
Immunogen	Peptide (C)KEPTEPKFKGLRLE, corresponding to amino acid residues 18- 31 of human PANX1 (Accession Q96RD7).
Purification	Purified by antigen-affinity chromatography
Conjugation	Unconjugated

Note

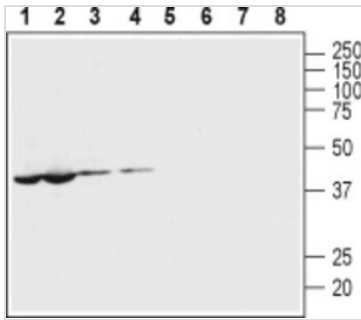
For laboratory research use only. Not for any clinical, therapeutic, or diagnostic use in humans or animals. Not for animal or human consumption.

Purchasers shall not, and agree not to enable third parties to, analyze, copy, reverse engineer or otherwise attempt to determine the structure or sequence of the product.



For full product information, images and publications, please visit our [website](#).

DATA IMAGES

**GTX04619 WB Image**

WB analysis of various samples using GTX04619 Pannexin 1 antibody prior incubated with (Lane 5-8) or without (Lane 1-4) blocking peptide.

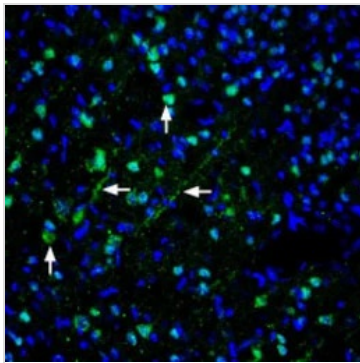
Lane 1 and 5 : Mouse heart tissue lysate

Lane 2 and 6 : Rat heart tissue lysate

Lane 3 and 7 : Mouse brain tissue lysate

Lane 4 and 8 : Rat brain tissue lysate

Dilution : 1:400

**GTX04619 IHC (Free Floating) Image**

IHC (Free floating) analysis of rat brain tissue using GTX04619 Pannexin 1 antibody. PANX1 staining is apparent in cells with neuronal outline (vertical arrows) and apical dendrites (horizontal arrows) in the parietal cingulate cortex region.

Green : Primary antibody

Blue : DAPI



For full product information, images and publications, please visit our [website](#).