



# SZABO SCANDIC

Part of Europa Biosite

## Produktinformation



Forschungsprodukte & Biochemikalien



Zellkultur & Verbrauchsmaterial



Diagnostik & molekulare Diagnostik



Laborgeräte & Service

Weitere Information auf den folgenden Seiten!  
See the following pages for more information!



### Lieferung & Zahlungsart

siehe unsere [Liefer- und Versandbedingungen](#)

### Zuschläge

- Mindermengenzuschlag
- Trockeneiszuschlag
- Gefahrgutzuschlag
- Expressversand

### SZABO-SCANDIC HandelsgmbH

Quellenstraße 110, A-1100 Wien

T. +43(0)1 489 3961-0

F. +43(0)1 489 3961-7

[mail@szabo-scandic.com](mailto:mail@szabo-scandic.com)

[www.szabo-scandic.com](http://www.szabo-scandic.com)

[linkedin.com/company/szaboscandic](https://www.linkedin.com/company/szaboscandic) 

## SNF5 antibody [ARC53139]

**Cat. No. GTX04623**

<b>Host</b>	Rabbit
<b>Clonality</b>	Monoclonal
<b>Isotype</b>	IgG
<b>Application</b>	WB, IHC-P
<b>Reactivity</b>	Human, Mouse, Rat

**Package**  
100 µl

## APPLICATION

**Application Note**

\*Optimal dilutions/concentrations should be determined by the researcher.

Suggested dilution	Recommended dilution
WB	1:1000-1:5000
IHC-P	1:50-1:200

Not tested in other applications.

**Calculated MW** 44 kDa. ([Note](#))

## PROPERTIES

<b>Form</b>	Liquid
<b>Buffer</b>	PBS, 0.05% BSA, 50% Glycerol
<b>Preservative</b>	0.05% proclin300
<b>Storage</b>	Store as concentrated solution. Centrifuge briefly prior to opening vial. For short-term storage (1-2 weeks), store at 4°C. For long-term storage, aliquot and store at -20°C or below. Avoid multiple freeze-thaw cycles.
<b>Concentration</b>	Batch dependent (Please refer to the vial label for the specific concentration.)
<b>Immunogen</b>	A synthetic peptide corresponding to a sequence within amino acids 50-150 of human SMARCB1/SNF5 (NP_003064.2).
<b>Purification</b>	Purified by affinity chromatography
<b>Conjugation</b>	Unconjugated

**Note**

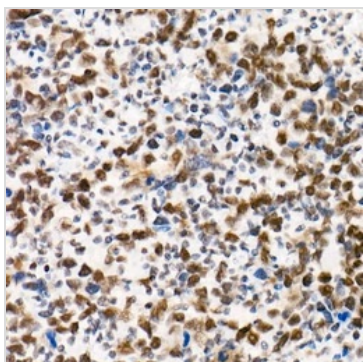
For laboratory research use only. Not for any clinical, therapeutic, or diagnostic use in humans or animals. Not for animal or human consumption.

Purchasers shall not, and agree not to enable third parties to, analyze, copy, reverse engineer or otherwise attempt to determine the structure or sequence of the product.



For full product information, images and publications, please visit our [website](#).

DATA IMAGES

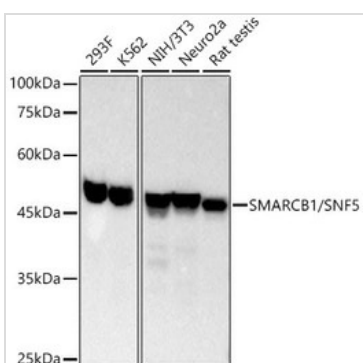


**GTX04623 IHC-P Image**

IHC-P analysis of human undifferentiated carcinoma of esophagus tissue using GTX04623 SNF5 antibody [ARC53139].

Antigen retrieval : 10 mM Tris/EDTA buffer pH 9.0

Dilution : 1:100

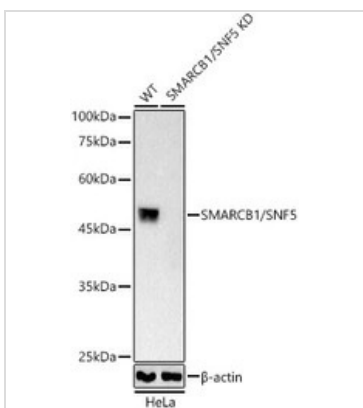


**GTX04623 WB Image**

WB analysis of various samples using GTX04623 SNF5 antibody [ARC53139].

Loading : 25 µg

Dilution : 1:10000

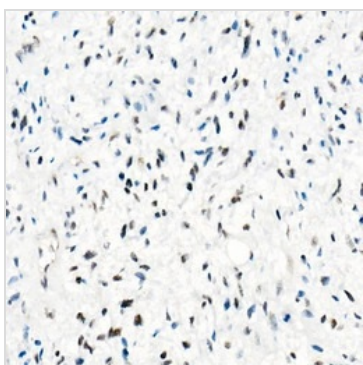


**GTX04623 WB Image**

WB analysis of HeLa cells with/without KD treatment using GTX04623 SNF5 antibody [ARC53139].

Loading : 25 µg

Dilution : 1:2000



**GTX04623 IHC-P Image**

IHC-P analysis of human epithelioid sarcoma (ini-1 deletion) tissue using GTX04623 SNF5 antibody [ARC53139].

Antigen retrieval : 10 mM Tris/EDTA buffer pH 9.0

Dilution : 1:100



For full product information, images and publications, please visit our [website](#).