



SZABO SCANDIC

Part of Europa Biosite

Produktinformation



Forschungsprodukte & Biochemikalien



Zellkultur & Verbrauchsmaterial



Diagnostik & molekulare Diagnostik



Laborgeräte & Service

Weitere Information auf den folgenden Seiten!
See the following pages for more information!



Lieferung & Zahlungsart

siehe unsere [Liefer- und Versandbedingungen](#)

Zuschläge

- Mindermengenzuschlag
- Trockeneiszuschlag
- Gefahrgutzuschlag
- Expressversand

SZABO-SCANDIC HandelsgmbH

Quellenstraße 110, A-1100 Wien

T. +43(0)1 489 3961-0

F. +43(0)1 489 3961-7

mail@szabo-scandic.com

www.szabo-scandic.com

[linkedin.com/company/szaboscandic](https://www.linkedin.com/company/szaboscandic) 

FBXL10 antibody [6F6G11]

Cat. No. GTX04628

Host	Mouse
Clonality	Monoclonal
Isotype	IgG2b
Application	WB, FACS, ELISA
Reactivity	Human

Package
100 µl

APPLICATION

Application Note

*Optimal dilutions/concentrations should be determined by the researcher.

Suggested dilution	Recommended dilution
WB	1:500-1:2000
FACS	1:200-1:400
ELISA	1:10000

Not tested in other applications.

Calculated MW 153 kDa. ([Note](#))

PROPERTIES

Form	Liquid
Buffer	PBS
Preservative	0.05% Sodium azide
Storage	Store as concentrated solution. Centrifuge briefly prior to opening vial. For short-term storage (1-2 weeks), store at 4°C. For long-term storage, aliquot and store at -20°C or below. Avoid multiple freeze-thaw cycles.
Concentration	1 mg/ml (Please refer to the vial label for the specific concentration.)
Immunogen	Purified recombinant fragment of human FBXL10 (AA: 457-555) expressed in E. Coli.
Purification	Purified IgG2b
Conjugation	Unconjugated

Note

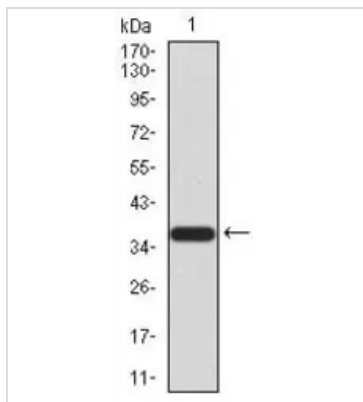
For laboratory research use only. Not for any clinical, therapeutic, or diagnostic use in humans or animals. Not for animal or human consumption.

Purchasers shall not, and agree not to enable third parties to, analyze, copy, reverse engineer or otherwise attempt to determine the structure or sequence of the product.



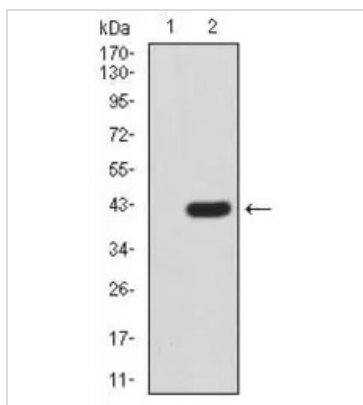
For full product information, images and publications, please visit our [website](#).

DATA IMAGES



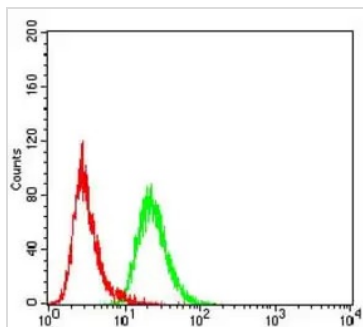
GTX04628 WB Image

WB analysis of human FBXL10 (AA: 457-555) recombinant protein using GTX04628 FBXL10 [6F6G11].



GTX04628 WB Image

WB analysis of HEK293 cells overexpressed with/without FBXL10 (AA: 457-555)-hlgGfc using GTX04628 FBXL10 antibody [6F6G11].

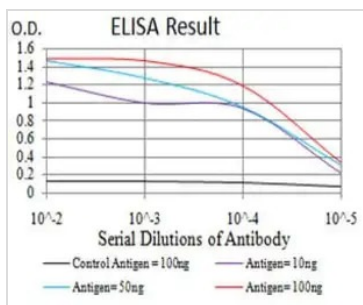


GTX04628 FACS Image

FACS analysis of HeLa cells using GTX04628 FBXL10 antibody [6F6G11].

Green : Primary antibody

Red : Negative control



GTX04628 ELISA Image

ELISA analysis of antigen using serially diluted GTX04628 FBXL10 antibody [6F6G11].

Black : Control antigen 100 ng

Purple : Antigen 10ng

Blue : Antigen 50ng

Red : Antigen 100ng



For full product information, images and publications, please visit our [website](#).