



# SZABO SCANDIC

Part of Europa Biosite

## Produktinformation



Forschungsprodukte & Biochemikalien



Zellkultur & Verbrauchsmaterial



Diagnostik & molekulare Diagnostik



Laborgeräte & Service

Weitere Information auf den folgenden Seiten!  
See the following pages for more information!



### Lieferung & Zahlungsart

siehe unsere [Liefer- und Versandbedingungen](#)

### Zuschläge

- Mindermengenzuschlag
- Trockeneiszuschlag
- Gefahrgutzuschlag
- Expressversand

### SZABO-SCANDIC HandelsgmbH

Quellenstraße 110, A-1100 Wien

T. +43(0)1 489 3961-0

F. +43(0)1 489 3961-7

[mail@szabo-scandic.com](mailto:mail@szabo-scandic.com)

[www.szabo-scandic.com](http://www.szabo-scandic.com)

[linkedin.com/company/szaboscandic](https://www.linkedin.com/company/szaboscandic) 

## Human Papillomavirus type 16 E6 antibody

Cat. No. GTX04630

Host	Rabbit
Clonality	Polyclonal
Isotype	IgG
Application	WB, IHC-P, FACS
Reactivity	Human papillomavirus type 16

Package  
100 µl

## APPLICATION

## Application Note

\*Optimal dilutions/concentrations should be determined by the researcher.

Suggested dilution	Recommended dilution
WB	Assay dependent
IHC-P	1:200-1:400
FACS	Assay dependent

Not tested in other applications.

## PROPERTIES

Form	Liquid
Buffer	10mM TBS, 1% BSA, 50% Glycerol
Preservative	0.03% Proclin300
Storage	Store as concentrated solution. Centrifuge briefly prior to opening vial. For short-term storage (1-2 weeks), store at 4°C. For long-term storage, aliquot and store at -20°C or below. Avoid multiple freeze-thaw cycles.
Concentration	1 mg/ml (Please refer to the vial label for the specific concentration.)
Immunogen	Synthetic peptide from HPV16-E6 conjugated to KLH (aa 85-158)
Purification	Protein A purified
Conjugation	Unconjugated

## Note

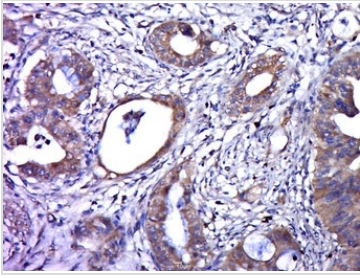
For laboratory research use only. Not for any clinical, therapeutic, or diagnostic use in humans or animals. Not for animal or human consumption.

Purchasers shall not, and agree not to enable third parties to, analyze, copy, reverse engineer or otherwise attempt to determine the structure or sequence of the product.



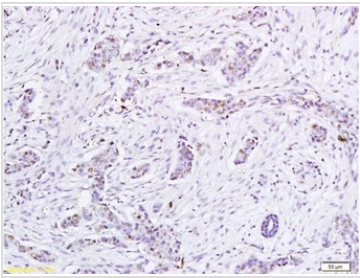
For full product information, images and publications, please visit our [website](#).

DATA IMAGES



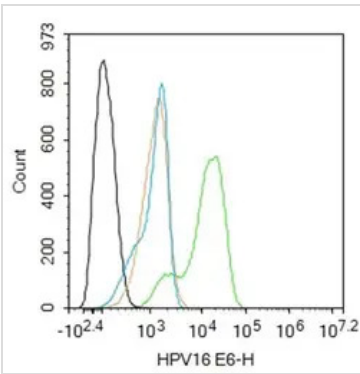
**GTX04630 IHC-P Image**

IHC-P analysis of human cervical cancer tissue using GTX04630 Human Papillomavirus type 16 E6 antibody.  
 Antigen retrieval : Boiled sodium citrate buffer (pH 6.0)  
 Dilution : 1:400



**GTX04630 IHC-P Image**

IHC-P analysis of human cancer tissue using GTX04630 Human Papillomavirus type 16 E6 antibody.  
 Dilution : 1:200



**GTX04630 FACS Image**

FACS analysis of 4% PFA-fixed HeLa cells using GTX04630 Human Papillomavirus type 16 E6 antibody.  
 Green : Primary antibody  
 Orange : Isotype control  
 Light blue : secondary antibody only  
 Block : cell only  
 Permeabilization : 90% ice-cold methanol  
 Dilution : 1:100



For full product information, images and publications, please visit our [website](#).