



SZABO SCANDIC

Part of Europa Biosite

Produktinformation



Forschungsprodukte & Biochemikalien



Zellkultur & Verbrauchsmaterial



Diagnostik & molekulare Diagnostik



Laborgeräte & Service

Weitere Information auf den folgenden Seiten!
See the following pages for more information!



Lieferung & Zahlungsart

siehe unsere [Liefer- und Versandbedingungen](#)

Zuschläge

- Mindermengenzuschlag
- Trockeneiszuschlag
- Gefahrgutzuschlag
- Expressversand

SZABO-SCANDIC HandelsgmbH

Quellenstraße 110, A-1100 Wien

T. +43(0)1 489 3961-0

F. +43(0)1 489 3961-7

mail@szabo-scandic.com

www.szabo-scandic.com

[linkedin.com/company/szaboscandic](https://www.linkedin.com/company/szaboscandic) 

Tau antibody [ARC58125]

Cat. No. GTX04632

Host	Rabbit
Clonality	Monoclonal
Isotype	IgG
Application	WB, IHC-P, IP
Reactivity	Human, Mouse, Rat

Package
100 µl

APPLICATION

Application Note

*Optimal dilutions/concentrations should be determined by the researcher.

Suggested dilution	Recommended dilution
WB	1:1000-1:5000
IHC-P	Assay dependent
IP	1:50-1:200

Not tested in other applications.

Calculated MW 79 kDa. ([Note](#))

PROPERTIES

Form	Liquid
Buffer	PBS, 0.05% BSA, 50% Glycerol
Preservative	0.05% proclin300
Storage	Store as concentrated solution. Centrifuge briefly prior to opening vial. For short-term storage (1-2 weeks), store at 4°C. For long-term storage, aliquot and store at -20°C or below. Avoid multiple freeze-thaw cycles.
Concentration	Batch dependent (Please refer to the vial label for the specific concentration.)
Immunogen	A synthetic peptide corresponding to a sequence within amino acids 1-100 of human MAPT (NM_005910.6)
Purification	Purified by affinity chromatography
Conjugation	Unconjugated

Note

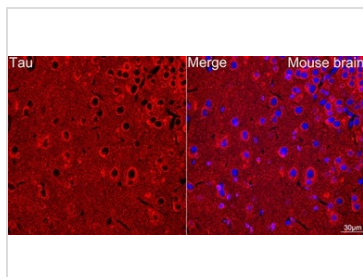
For laboratory research use only. Not for any clinical, therapeutic, or diagnostic use in humans or animals. Not for animal or human consumption.

Purchasers shall not, and agree not to enable third parties to, analyze, copy, reverse engineer or otherwise attempt to determine the structure or sequence of the product.



For full product information, images and publications, please visit our [website](#).

DATA IMAGES



GTX04632 IHC-P Image

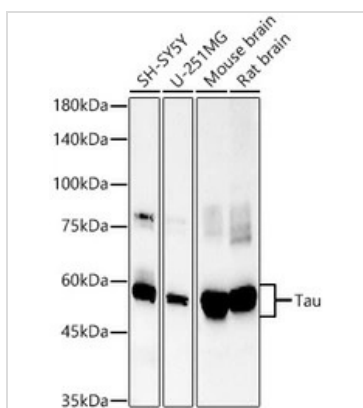
IHC-P analysis of mouse brain tissue using GTX04632 Tau antibody [ARC58125].

Orange : Primary antibody

Blue : DAPI

Antigen retrieval : 10 mM citrate buffer (pH 6.0)

Dilution : 1:100

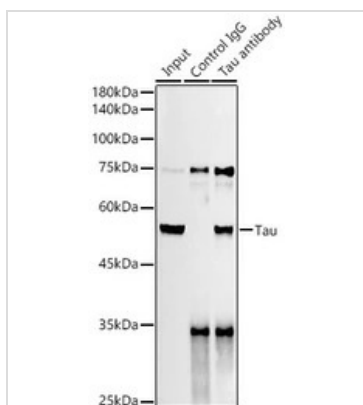


GTX04632 WB Image

WB analysis of various samples using GTX04632 Tau antibody [ARC58125].

Loading : 25 µg

Dilution : 1:2000

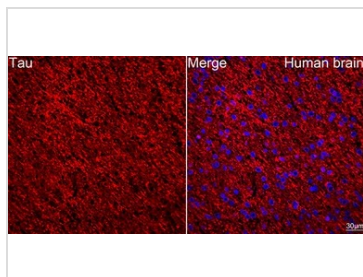


GTX04632 WB IP Image

IP analysis of SH-SY5Y cell lysate using GTX04632 Tau antibody [ARC58125].

Antibody amount : 3µg / 300µg extracts

Dilution : 1:1000



GTX04632 IHC-P Image

IHC-P analysis of human brain tissue using GTX04632 Tau antibody [ARC58125].

Orange : Primary antibody

Blue : DAPI

Antigen retrieval : 10 mM citrate buffer (pH 6.0)

Dilution : 1:100



For full product information, images and publications, please visit our [website](http://www.genetex.com).