



# SZABO SCANDIC

Part of Europa Biosite

## Produktinformation



Forschungsprodukte & Biochemikalien



Zellkultur & Verbrauchsmaterial



Diagnostik & molekulare Diagnostik



Laborgeräte & Service

Weitere Information auf den folgenden Seiten!  
See the following pages for more information!



### Lieferung & Zahlungsart

siehe unsere [Liefer- und Versandbedingungen](#)

### Zuschläge

- Mindermengenzuschlag
- Trockeneiszuschlag
- Gefahrgutzuschlag
- Expressversand

### SZABO-SCANDIC HandelsgmbH

Quellenstraße 110, A-1100 Wien

T. +43(0)1 489 3961-0

F. +43(0)1 489 3961-7

[mail@szabo-scandic.com](mailto:mail@szabo-scandic.com)

[www.szabo-scandic.com](http://www.szabo-scandic.com)

[linkedin.com/company/szaboscandic](https://www.linkedin.com/company/szaboscandic) 

## WISP1 antibody

Cat. No. GTX04633

<b>Host</b>	Rabbit
<b>Clonality</b>	Polyclonal
<b>Isotype</b>	IgG
<b>Application</b>	WB, IHC-P, IHC-Fr, IHC-P (cell pellet)
<b>Reactivity</b>	Human, Mouse, Rat

Package  
100 µg

## APPLICATION

## Application Note

\*Optimal dilutions/concentrations should be determined by the researcher.

Suggested dilution	Recommended dilution
WB	0.1-0.5 µg/mL
IHC-P	0.5-1 µg/mL
IHC-Fr	0.5-1 µg/mL
IHC-P (cell pellet)	Assay dependent

## Note : By heat

Not tested in other applications.

**Calculated MW** 40 kDa. ([Note](#))

## PROPERTIES

<b>Form</b>	Liquid
<b>Buffer</b>	0.2 mg Na <sub>2</sub> HPO <sub>4</sub> , 0.9 mg NaCl, 5 mg BSA
<b>Preservative</b>	0.05 mg Thimerosal, 0.05 mg Sodium azide
<b>Storage</b>	Store as concentrated solution. Centrifuge briefly prior to opening vial. For short-term storage (1-2 weeks), store at 4°C. For long-term storage, aliquot and store at -20°C or below. Avoid multiple freeze-thaw cycles.
<b>Concentration</b>	0.5 mg/ml (Please refer to the vial label for the specific concentration.)
<b>Immunogen</b>	A synthetic peptide corresponding to a sequence at the C-terminus of human WISP1, different from the related mouse and rat sequences by one amino acid.
<b>Purification</b>	Purified by antigen-affinity chromatography
<b>Conjugation</b>	Unconjugated



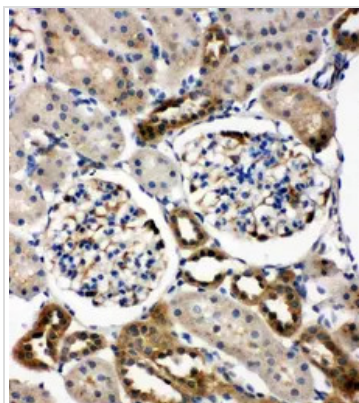
For full product information, images and publications, please visit our [website](#).

For laboratory research use only. Not for any clinical, therapeutic, or diagnostic use in humans or animals. Not for animal or human consumption.

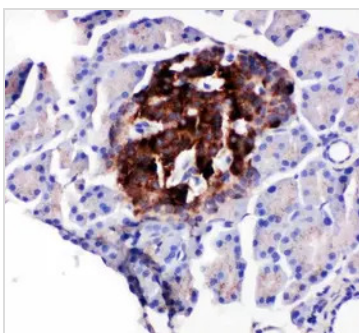
**Note**

Purchasers shall not, and agree not to enable third parties to, analyze, copy, reverse engineer or otherwise attempt to determine the structure or sequence of the product.

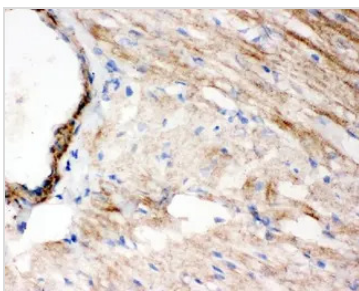
## DATA IMAGES

**GTX04633 IHC-P Image**

IHC-P analysis of rat kidney tissue using GTX04633 WISP1 antibody.

**GTX04633 IHC-P Image**

IHC-P analysis of rat pancreas tissue using GTX04633 WISP1 antibody.

**GTX04633 IHC-Fr Image**

IHC-Fr analysis of rat cardiac muscle tissue using GTX04633 WISP1 antibody.

Dilution : 1 µg/mL



For full product information, images and publications, please visit our [website](#).