



SZABO SCANDIC

Part of Europa Biosite

Produktinformation



Forschungsprodukte & Biochemikalien



Zellkultur & Verbrauchsmaterial



Diagnostik & molekulare Diagnostik



Laborgeräte & Service

Weitere Information auf den folgenden Seiten!
See the following pages for more information!



Lieferung & Zahlungsart

siehe unsere [Liefer- und Versandbedingungen](#)

Zuschläge

- Mindermengenzuschlag
- Trockeneiszuschlag
- Gefahrgutzuschlag
- Expressversand

SZABO-SCANDIC HandelsgmbH

Quellenstraße 110, A-1100 Wien

T. +43(0)1 489 3961-0

F. +43(0)1 489 3961-7

mail@szabo-scandic.com

www.szabo-scandic.com

[linkedin.com/company/szaboscandic](https://www.linkedin.com/company/szaboscandic) 

IL3 Receptor beta antibody [1D5E4]

Cat. No. GTX04642

Host	Mouse
Clonality	Monoclonal
Isotype	IgG1
Application	WB, IHC-P, FACS, ELISA
Reactivity	Human, Mouse, Rat

Package
100 µl

APPLICATION

Application Note

*Optimal dilutions/concentrations should be determined by the researcher.

Suggested dilution	Recommended dilution
WB	1:500-1:2000
IHC-P	1:200-1:1000
FACS	1:200-1:400
ELISA	1:10000

Not tested in other applications.

Calculated MW 97 kDa. ([Note](#))

PROPERTIES

Form	Liquid
Buffer	PBS
Preservative	0.05% Sodium azide
Storage	Store as concentrated solution. Centrifuge briefly prior to opening vial. For short-term storage (1-2 weeks), store at 4°C. For long-term storage, aliquot and store at -20°C or below. Avoid multiple freeze-thaw cycles.
Concentration	1 mg/ml (Please refer to the vial label for the specific concentration.)
Immunogen	Purified recombinant fragment of human CD131 (AA: extra 17-149) expressed in E. Coli.
Purification	Purified IgG1
Conjugation	Unconjugated

Note

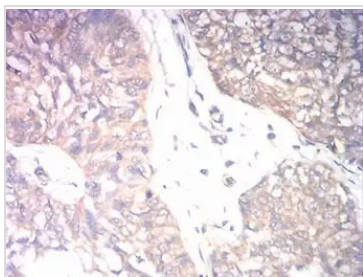
For laboratory research use only. Not for any clinical, therapeutic, or diagnostic use in humans or animals. Not for animal or human consumption.

Purchasers shall not, and agree not to enable third parties to, analyze, copy, reverse engineer or otherwise attempt to determine the structure or sequence of the product.



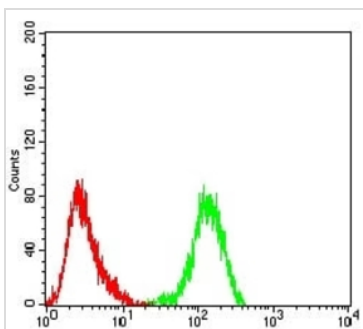
For full product information, images and publications, please visit our [website](#).

DATA IMAGES



GTX04642 IHC-P Image

IHC-P analysis of human bladder cancer tissue using GTX04642 IL3 Receptor beta antibody [1D5E4].

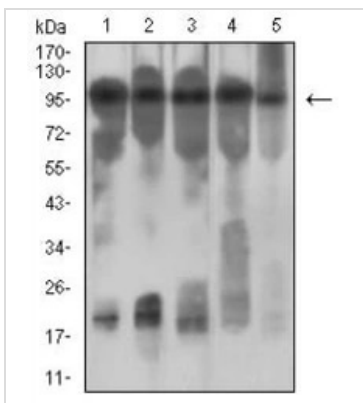


GTX04642 FACS Image

FACS analysis of HeLa cells using GTX04642 IL3 Receptor beta antibody [1D5E4].

Green : Primary antibody

Red : Negative control



GTX04642 WB Image

WB analysis of various samples using GTX04642 IL3 Receptor beta antibody [1D5E4].

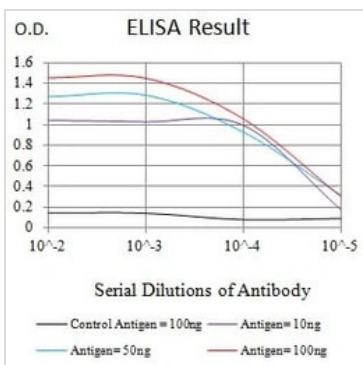
Lane 1 : NIH-3T3 whole cell lysate

Lane 2 : HeLa whole cell lysate

Lane 3 : C6 whole cell lysate

Lane 4 : A549 whole cell lysate

Lane 5 : MCF-7 whole cell lysate



GTX04642 ELISA Image

ELISA analysis of antigen using serially diluted GTX04642 IL3 Receptor beta antibody [1D5E4].

Black : Control antigen 100 ng

Purple : Antigen 10 ng

Blue : Antigen 50 ng

Red : Antigen 100 ng



For full product information, images and publications, please visit our [website](http://www.genetex.com).