



SZABO SCANDIC

Part of Europa Biosite

Produktinformation



Forschungsprodukte & Biochemikalien



Zellkultur & Verbrauchsmaterial



Diagnostik & molekulare Diagnostik



Laborgeräte & Service

Weitere Information auf den folgenden Seiten!
See the following pages for more information!



Lieferung & Zahlungsart

siehe unsere [Liefer- und Versandbedingungen](#)

Zuschläge

- Mindermengenzuschlag
- Trockeneiszuschlag
- Gefahrgutzuschlag
- Expressversand

SZABO-SCANDIC HandelsgmbH

Quellenstraße 110, A-1100 Wien

T. +43(0)1 489 3961-0

F. +43(0)1 489 3961-7

mail@szabo-scandic.com

www.szabo-scandic.com

[linkedin.com/company/szaboscandic](https://www.linkedin.com/company/szaboscandic) 

JNK antibody

Cat. No. GTX04658

Host	Rabbit
Clonality	Polyclonal
Isotype	IgG
Application	WB, ICC/IF, IHC-P, FACS
Reactivity	Human, Mouse, Rat, Chicken, Pig

Package
100 µl

APPLICATION

Application Note

*Optimal dilutions/concentrations should be determined by the researcher.

Suggested dilution	Recommended dilution
WB	1:300-1:5000
ICC/IF	1:50-1:200
IHC-P	1:200-1:400
FACS	1:20-1:100

Not tested in other applications.

Calculated MW 42-47 kDa. ([Note](#))

PROPERTIES

Form	Liquid
Buffer	10mM TBS, 1% BSA, 50% Glycerol
Preservative	0.03% Proclin300
Storage	Store as concentrated solution. Centrifuge briefly prior to opening vial. For short-term storage (1-2 weeks), store at 4°C. For long-term storage, aliquot and store at -20°C or below. Avoid multiple freeze-thaw cycles.
Concentration	1 mg/ml (Please refer to the vial label for the specific concentration.)
Immunogen	KLH conjugated synthetic peptide derived from mouse JNK1/2/3(151-250)
Purification	Protein A purified
Conjugation	Unconjugated

Note

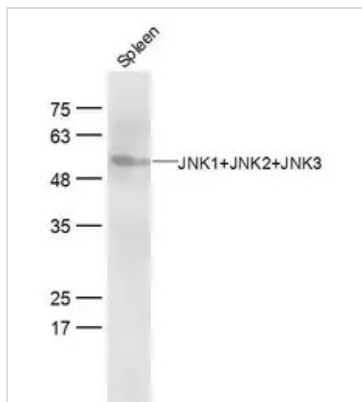
For laboratory research use only. Not for any clinical, therapeutic, or diagnostic use in humans or animals. Not for animal or human consumption.

Purchasers shall not, and agree not to enable third parties to, analyze, copy, reverse engineer or otherwise attempt to determine the structure or sequence of the product.



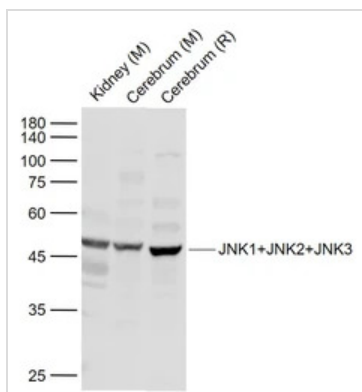
For full product information, images and publications, please visit our [website](#).

DATA IMAGES



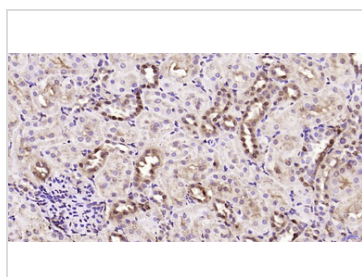
GTX04658 WB Image

WB analysis of mouse spleen tissue lysate using GTX04658 JNK antibody.
Dilution : 1:300



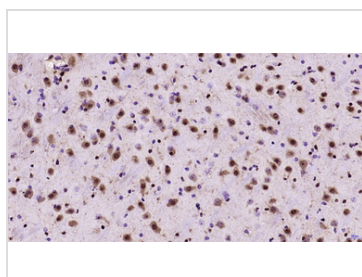
GTX04658 WB Image

WB analysis of various sample lysates using GTX04658 JNK antibody.
Lane 1 : Mouse kidney tissue lysates
Lane 2 : Mouse cerebrum tissue lysate
Lane 3 : Rat cerebrum tissue lysate
Dilution : 1:1000



GTX04658 IHC-P Image

IHC-P analysis of rat kidney tissue using GTX04658 JNK antibody.
Antigen retrieval : Boiled in sodium citrate buffer (pH6.0)
Dilution : 1:200



GTX04658 IHC-P Image

IHC-P analysis of mouse brain tissue using GTX04658 JNK antibody.
Antigen retrieval : Boiled in sodium citrate buffer (pH6.0)
Dilution : 1:200



For full product information, images and publications, please visit our [website](#).