



# SZABO SCANDIC

Part of Europa Biosite

## Produktinformation



Forschungsprodukte & Biochemikalien



Zellkultur & Verbrauchsmaterial



Diagnostik & molekulare Diagnostik



Laborgeräte & Service

Weitere Information auf den folgenden Seiten!  
See the following pages for more information!



### Lieferung & Zahlungsart

siehe unsere [Liefer- und Versandbedingungen](#)

### Zuschläge

- Mindermengenzuschlag
- Trockeneiszuschlag
- Gefahrgutzuschlag
- Expressversand

### SZABO-SCANDIC HandelsgmbH

Quellenstraße 110, A-1100 Wien

T. +43(0)1 489 3961-0

F. +43(0)1 489 3961-7

[mail@szabo-scandic.com](mailto:mail@szabo-scandic.com)

[www.szabo-scandic.com](http://www.szabo-scandic.com)

[linkedin.com/company/szaboscandic](https://www.linkedin.com/company/szaboscandic) 

## PI3 kinase p110 beta antibody

**Cat. No. GTX04662**

<b>Host</b>	Rabbit
<b>Clonality</b>	Polyclonal
<b>Isotype</b>	IgG
<b>Application</b>	WB
<b>Reactivity</b>	Human, Mouse

**Package**  
100 µl

## APPLICATION

**Application Note**

\*Optimal dilutions/concentrations should be determined by the researcher.

**Suggested dilution**                      **Recommended dilution**

WB    1:300-1:5000

Not tested in other applications.

**Calculated MW**                      123 kDa. ([Note](#))

## PROPERTIES

**Form**                                      Liquid**Buffer**                                      10mM TBS, 1% BSA, 50% Glycerol**Preservative**                              0.03% Proclin300**Storage**                                      Store as concentrated solution. Centrifuge briefly prior to opening vial. For short-term storage (1-2 weeks), store at 4°C. For long-term storage, aliquot and store at -20°C or below. Avoid multiple freeze-thaw cycles.**Concentration**                              1 mg/ml (Please refer to the vial label for the specific concentration.)**Immunogen**                                      KLH conjugated synthetic peptide derived from human PI3 Kinase p110 beta (aa 971-1070)**Purification**                                      Protein A purified**Conjugation**                                      Unconjugated**Note**

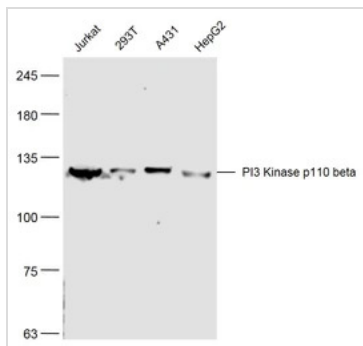
For laboratory research use only. Not for any clinical, therapeutic, or diagnostic use in humans or animals. Not for animal or human consumption.

Purchasers shall not, and agree not to enable third parties to, analyze, copy, reverse engineer or otherwise attempt to determine the structure or sequence of the product.



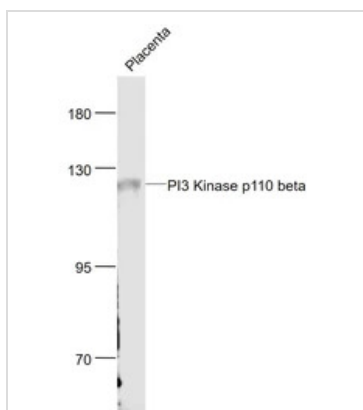
For full product information, images and publications, please visit our [website](#).

DATA IMAGES



**GTX04662 WB Image**

WB analysis of various samples using GTX04662 PI3 kinase p110 beta antibody.  
Dilution : 1:300



**GTX04662 WB Image**

WB analysis of mouse placenta tissue lysate using GTX04662 PI3 kinase p110 beta antibody.  
Dilution : 1:1000



For full product information, images and publications, please visit our [website](#).