



# SZABO SCANDIC

Part of Europa Biosite

## Produktinformation



Forschungsprodukte & Biochemikalien



Zellkultur & Verbrauchsmaterial



Diagnostik & molekulare Diagnostik



Laborgeräte & Service

Weitere Information auf den folgenden Seiten!  
See the following pages for more information!



### Lieferung & Zahlungsart

siehe unsere [Liefer- und Versandbedingungen](#)

### Zuschläge

- Mindermengenzuschlag
- Trockeneiszuschlag
- Gefahrgutzuschlag
- Expressversand

### SZABO-SCANDIC HandelsgmbH

Quellenstraße 110, A-1100 Wien

T. +43(0)1 489 3961-0

F. +43(0)1 489 3961-7

[mail@szabo-scandic.com](mailto:mail@szabo-scandic.com)

[www.szabo-scandic.com](http://www.szabo-scandic.com)

[linkedin.com/company/szaboscandic](https://www.linkedin.com/company/szaboscandic) 

## ARPC1A antibody

**Cat. No. GTX04668**

<b>Host</b>	Goat
<b>Clonality</b>	Polyclonal
<b>Isotype</b>	IgG
<b>Application</b>	WB, IHC-P, ELISA
<b>Reactivity</b>	Human, Mouse, Rat

**Package**  
100 µg

## APPLICATION

**Application Note**

\*Optimal dilutions/concentrations should be determined by the researcher.

Suggested dilution	Recommended dilution
WB	0.1-0.3 µg/mL
IHC-P	5 µg/mL
ELISA	1:64000

Not tested in other applications.

**Calculated MW** 42 kDa. ([Note](#))**Product Note** This antibody is expected to recognize both reported isoforms (NP\_006400.2; NP\_001177925.1). No cross-reactivity expected with ARPC1B.

## PROPERTIES

<b>Form</b>	Liquid
<b>Buffer</b>	TBS, 0.5% BSA
<b>Preservative</b>	0.02% sodium azide
<b>Storage</b>	Store as concentrated solution. Centrifuge briefly prior to opening vial. For short-term storage (1-2 weeks), store at 4°C. For long-term storage, aliquot and store at -20°C or below. Avoid multiple freeze-thaw cycles.
<b>Concentration</b>	0.5 mg/ml (Please refer to the vial label for the specific concentration.)
<b>Immunogen</b>	Peptide with sequence C-DFKTLESSIQGLR, from the C Terminus of the protein sequence according to NP_006400.2, NP_001177925.1.
<b>Purification</b>	Purified by ammonium sulphate precipitation followed by antigen-affinity chromatography From serum
<b>Conjugation</b>	Unconjugated



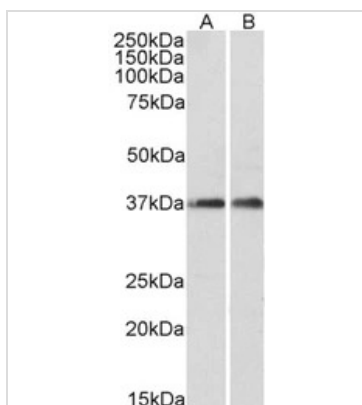
For full product information, images and publications, please visit our [website](#).

For laboratory research use only. Not for any clinical, therapeutic, or diagnostic use in humans or animals. Not for animal or human consumption.

**Note**

Purchasers shall not, and agree not to enable third parties to, analyze, copy, reverse engineer or otherwise attempt to determine the structure or sequence of the product.

## DATA IMAGES

**GTX04668 WB Image**

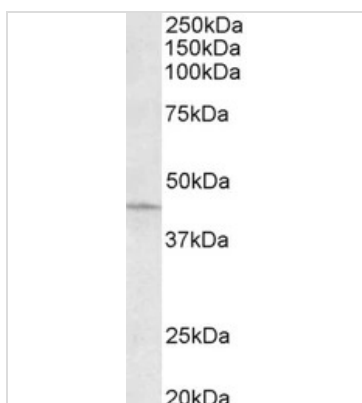
WB analysis of various samples using GTX04668 ARPC1A antibody.

Lane A : Fetal mouse brain tissue lysate

Lane B : Adult rat brain tissue lysate

Loading : 35 µg

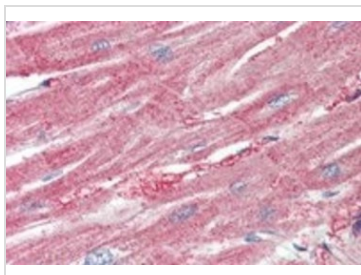
Dilution : 0.1 µg/mL

**GTX04668 WB Image**

WB analysis of HeLa whole cell lysate using GTX04668 ARPC1A antibody.

Loading : 35 µg

Dilution : 0.3 µg/mL

**GTX04668 IHC-P Image**

IHC-P analysis of human heart tissue using GTX04668 ARPC1A antibody.

Antigen retrieval : Heat mediated citrate buffer (pH 6)

Dilution : 5µg/ml



For full product information, images and publications, please visit our [website](#).