



SZABO SCANDIC

Part of Europa Biosite

Produktinformation



Forschungsprodukte & Biochemikalien



Zellkultur & Verbrauchsmaterial



Diagnostik & molekulare Diagnostik



Laborgeräte & Service

Weitere Information auf den folgenden Seiten!
See the following pages for more information!



Lieferung & Zahlungsart

siehe unsere [Liefer- und Versandbedingungen](#)

Zuschläge

- Mindermengenzuschlag
- Trockeneiszuschlag
- Gefahrgutzuschlag
- Expressversand

SZABO-SCANDIC HandelsgmbH

Quellenstraße 110, A-1100 Wien

T. +43(0)1 489 3961-0

F. +43(0)1 489 3961-7

mail@szabo-scandic.com

www.szabo-scandic.com

[linkedin.com/company/szaboscandic](https://www.linkedin.com/company/szaboscandic) 

TRPC6 antibody

Cat. No. GTX04669

Host	Rabbit
Clonality	Polyclonal
Isotype	IgG
Application	WB, ICC/IF, IHC-P, ELISA, IHC-P (cell pellet)
Reactivity	Human, Mouse

Package
100 µg

APPLICATION

Application Note

*Optimal dilutions/concentrations should be determined by the researcher.

Suggested dilution	Recommended dilution
WB	0.5-1 µg/mL
ICC/IF	5 µg/mL
IHC-P	10 µg/mL
ELISA	Assay dependent
IHC-P (cell pellet)	2 µg/mL

Not tested in other applications.

Calculated MW 106 kDa. ([Note](#))

PROPERTIES

Form	Liquid
Buffer	PBS
Preservative	0.02% sodium azide
Storage	Store as concentrated solution. Centrifuge briefly prior to opening vial. For short-term storage (1-2 weeks), store at 4°C. For long-term storage, aliquot and store at -20°C or below. Avoid multiple freeze-thaw cycles.
Concentration	1 mg/ml (Please refer to the vial label for the specific concentration.)
Immunogen	14 amino acid synthetic peptide from near the amino terminus of human TRPC6. The immunogen is located within amino acids 50 - 100 of TRPC6.
Purification	Purified by antigen-affinity chromatography
Conjugation	Unconjugated



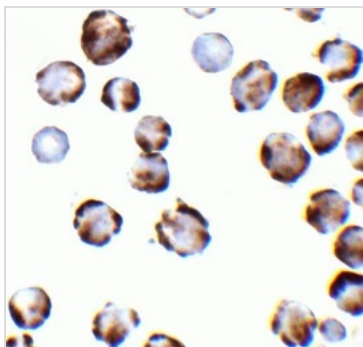
For full product information, images and publications, please visit our [website](#).

For laboratory research use only. Not for any clinical, therapeutic, or diagnostic use in humans or animals. Not for animal or human consumption.

Note

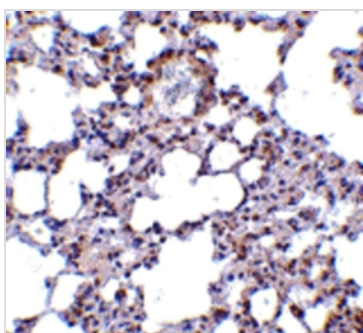
Purchasers shall not, and agree not to enable third parties to, analyze, copy, reverse engineer or otherwise attempt to determine the structure or sequence of the product.

DATA IMAGES

**GTX04669 IHC-P (cell pellet) Image**

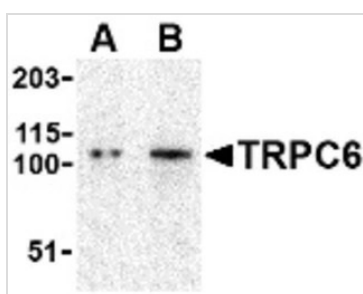
IHC-P (cell pellet) analysis of K562 cells using GTX04669 TRPC6 antibody.

Dilution : 2 µg/mL

**GTX04669 IHC-P Image**

IHC-P analysis of mouse lung tissue using GTX04669 TRPC6 antibody.

Dilution : 10 µg/mL

**GTX04669 WB Image**

WB analysis of K562 whole cell lysate using GTX04669 TRPC6 antibody.

Lane 1 : 0.5 µg/mL

Lane 2 : 1 µg/mL



For full product information, images and publications, please visit our [website](#).