



# SZABO SCANDIC

Part of Europa Biosite

## Produktinformation



Forschungsprodukte & Biochemikalien



Zellkultur & Verbrauchsmaterial



Diagnostik & molekulare Diagnostik



Laborgeräte & Service

Weitere Information auf den folgenden Seiten!  
See the following pages for more information!



### Lieferung & Zahlungsart

siehe unsere [Liefer- und Versandbedingungen](#)

### Zuschläge

- Mindermengenzuschlag
- Trockeneiszuschlag
- Gefahrgutzuschlag
- Expressversand

### SZABO-SCANDIC HandelsgmbH

Quellenstraße 110, A-1100 Wien

T. +43(0)1 489 3961-0

F. +43(0)1 489 3961-7

[mail@szabo-scandic.com](mailto:mail@szabo-scandic.com)

[www.szabo-scandic.com](http://www.szabo-scandic.com)

[linkedin.com/company/szaboscandic](https://www.linkedin.com/company/szaboscandic) 

## Her2 / ErbB2 antibody [24D2] (APC)

Cat. No. GTX04671-07

Host	Mouse
Clonality	Monoclonal
Isotype	IgG1
Application	FACS
Reactivity	Human

Package  
100 test

## APPLICATION

## Application Note

\*Optimal dilutions/concentrations should be determined by the researcher.

Suggested dilution	Recommended dilution
FACS	10 $\mu$ L reagent / 100 $\mu$ L of whole blood or $10^6$ cells in a suspension

Not tested in other applications.

Calculated MW 138 kDa. ([Note](#))

## Product Note

The mouse monoclonal antibody 24D2 recognizes an extracellular epitope of human CD340 (HER-2), a type I transmembrane protein expressed by mesenchymal stem cells, B-lymphoblastic leukemia cells, subsets of C-ALL blasts, and various types of carcinomas.

## PROPERTIES

Form	Liquid
Buffer	PBS
Preservative	15 mM sodium azide
Storage	Store as concentrated solution. Centrifuge briefly prior to opening vial. Store at 4°C. DO NOT FREEZE. Protect from light.
Concentration	Batch dependent (Please refer to the vial label for the specific concentration.)
Immunogen	NIH-3T3 / human CD340 cells
Purification	Purified by size-exclusion chromatography
Conjugation	Allophycocyanin (APC)

## Note

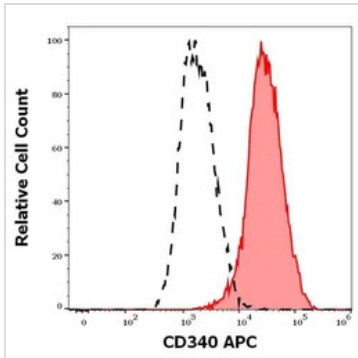
For laboratory research use only. Not for any clinical, therapeutic, or diagnostic use in humans or animals. Not for animal or human consumption.

Purchasers shall not, and agree not to enable third parties to, analyze, copy, reverse engineer or otherwise attempt to determine the structure or sequence of the product.



For full product information, images and publications, please visit our [website](#).

## DATA IMAGES

**GTX04671-07 FACS Image**

FACS analysis of MCF-7 cells using GTX04671-07 Her2 / ErbB2 antibody [24D2] (APC).

Red-filled: Primary antibody

Black-dashed line: Isotype control

Antibody amount : 10  $\mu$ L for 100  $\mu$ L of MCF-7 cells



For full product information, images and publications, please visit our [website](#).