



SZABO SCANDIC

Part of Europa Biosite

Produktinformation



Forschungsprodukte & Biochemikalien



Zellkultur & Verbrauchsmaterial



Diagnostik & molekulare Diagnostik



Laborgeräte & Service

Weitere Information auf den folgenden Seiten!
See the following pages for more information!



Lieferung & Zahlungsart

siehe unsere [Liefer- und Versandbedingungen](#)

Zuschläge

- Mindermengenzuschlag
- Trockeneiszuschlag
- Gefahrgutzuschlag
- Expressversand

SZABO-SCANDIC HandelsgmbH

Quellenstraße 110, A-1100 Wien

T. +43(0)1 489 3961-0

F. +43(0)1 489 3961-7

mail@szabo-scandic.com

www.szabo-scandic.com

[linkedin.com/company/szaboscandic](https://www.linkedin.com/company/szaboscandic) 

SCAMP1 antibody

Cat. No. GTX04672

Host	Rabbit
Clonality	Polyclonal
Isotype	IgG
Application	WB, FACS, ELISA
Reactivity	Human, Mouse, Rat

Package
100 µg

APPLICATION

Application Note

*Optimal dilutions/concentrations should be determined by the researcher.

Suggested dilution	Recommended dilution
WB	0.1-0.25 µg/ml
FACS	1-3 µg/1x10 ⁶ cells
ELISA	0.1-0.5 µg/ml

Not tested in other applications.

Calculated MW 38 kDa. ([Note](#))

PROPERTIES

Form	Liquid
Buffer	4mg Trehalose, 0.9mg NaCl, 0.2mg Na ₂ HPO ₄
Preservative	No preservatives
Storage	Store as concentrated solution. Centrifuge briefly prior to opening vial. For short-term storage (1-2 weeks), store at 4°C. For long-term storage, aliquot and store at -20°C or below. Avoid multiple freeze-thaw cycles.
Concentration	0.5 mg/ml (Please refer to the vial label for the specific concentration.)
Immunogen	E.coli-derived human SCAMP1 recombinant protein (Position: M1-N257).
Purification	Purified by antigen-affinity chromatography
Conjugation	Unconjugated

Note

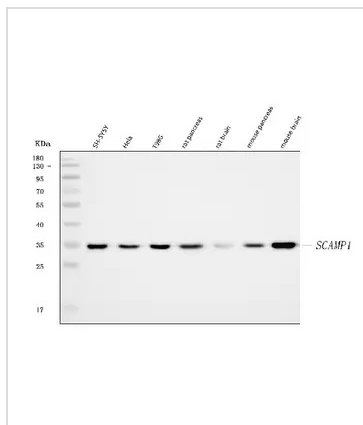
For laboratory research use only. Not for any clinical, therapeutic, or diagnostic use in humans or animals. Not for animal or human consumption.

Purchasers shall not, and agree not to enable third parties to, analyze, copy, reverse engineer or otherwise attempt to determine the structure or sequence of the product.



For full product information, images and publications, please visit our [website](#).

DATA IMAGES



GTX04672 WB Image

WB analysis of various samples using GTX04672 SCAMP1 antibody.

Lane 1: SH-SY5Y whole cell lysates

Lane 2: HeLa whole cell lysates

Lane 3: T98G whole cell lysates

Lane 4: Rat pancreas tissue lysates

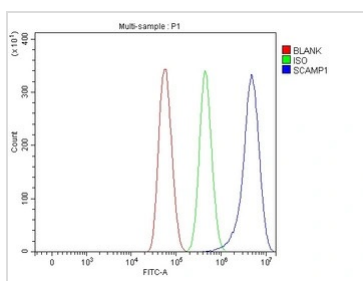
Lane 5: Rat brain tissue lysates

Lane 6: Mouse pancreas tissue lysates

Lane 7: Mouse brain tissue lysates

Loading : 30 µg

Dilution : 0.25 µg/mL



GTX04672 FACS Image

FACS analysis of U87 cells using GTX04672 SCAMP1 antibody.

Blue line: Primary antibody

Green line: Isotype control

Red line: Unlabelled sample

Dilution : 1 µg/1x10⁶ cells



For full product information, images and publications, please visit our [website](#).