



SZABO SCANDIC

Part of Europa Biosite

Produktinformation



Forschungsprodukte & Biochemikalien



Zellkultur & Verbrauchsmaterial



Diagnostik & molekulare Diagnostik



Laborgeräte & Service

Weitere Information auf den folgenden Seiten!
See the following pages for more information!



Lieferung & Zahlungsart

siehe unsere [Liefer- und Versandbedingungen](#)

Zuschläge

- Mindermengenzuschlag
- Trockeneiszuschlag
- Gefahrgutzuschlag
- Expressversand

SZABO-SCANDIC HandelsgmbH

Quellenstraße 110, A-1100 Wien

T. +43(0)1 489 3961-0

F. +43(0)1 489 3961-7

mail@szabo-scandic.com

www.szabo-scandic.com

[linkedin.com/company/szaboscandic](https://www.linkedin.com/company/szaboscandic) 

cGK1 antibody

Cat. No. GTX04678

Host	Rabbit
Clonality	Polyclonal
Isotype	IgG
Application	WB, ICC/IF, IHC-P, FACS, ELISA
Reactivity	Human, Mouse, Rat

Package
100 µg

APPLICATION

Application Note

*Optimal dilutions/concentrations should be determined by the researcher.

Suggested dilution	Recommended dilution
WB	0.25-0.5 µg/mL
ICC/IF	5 µg/mL
IHC-P	2-5 µg/mL
FACS	1-3 µg/1x10 ⁶ cells
ELISA	0.1-0.5 µg/mL

Not tested in other applications.

Calculated MW 76 kDa. ([Note](#))

PROPERTIES

Form	Liquid
Buffer	4mg Trehalose, 0.9mg NaCl, 0.2mg Na ₂ HPO ₄
Preservative	No preservatives
Storage	Store as concentrated solution. Centrifuge briefly prior to opening vial. For short-term storage (1-2 weeks), store at 4°C. For long-term storage, aliquot and store at -20°C or below. Avoid multiple freeze-thaw cycles.
Concentration	0.5 mg/ml (Please refer to the vial label for the specific concentration.)
Immunogen	E.coli-derived human cGKI/PRKG1 recombinant protein (Position: S2-Q44).
Purification	Purified by antigen-affinity chromatography
Conjugation	Unconjugated



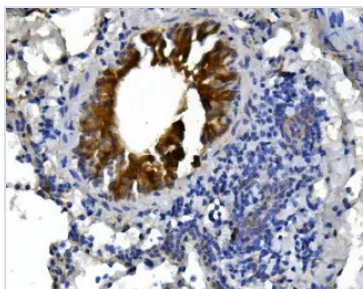
For full product information, images and publications, please visit our [website](#).

For laboratory research use only. Not for any clinical, therapeutic, or diagnostic use in humans or animals. Not for animal or human consumption.

Note

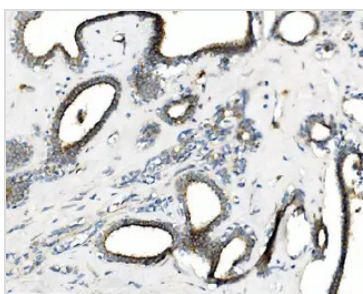
Purchasers shall not, and agree not to enable third parties to, analyze, copy, reverse engineer or otherwise attempt to determine the structure or sequence of the product.

DATA IMAGES



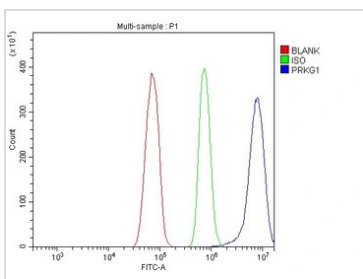
GTX04678 IHC-P Image

IHC-P analysis of mouse lung tissue using GTX04678 cGK1 antibody.
 Antigen retrieval : Heat mediated EDTA buffer (pH 8.0)
 Dilution : 2 µg/mL



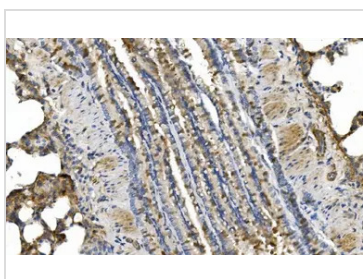
GTX04678 IHC-P Image

IHC-P analysis of human breast cancer tissue using GTX04678 cGK1 antibody.
 Antigen retrieval : Heat mediated EDTA buffer (pH 8.0)
 Dilution : 2 µg/mL



GTX04678 FACS Image

FACS analysis of RH35 cells using GTX04678 cGK1 antibody.
 Blue : Primary antibody
 Green : Isotype control
 Red : Unlabelled sample
 Dilution : 1µg/1x10⁶ cells



GTX04678 IHC-P Image

IHC-P analysis of rat lung tissue using GTX04678 cGK1 antibody.
 Antigen retrieval : Heat mediated EDTA buffer (pH 8.0)
 Dilution : 2 µg/mL



For full product information, images and publications, please visit our [website](#).