



SZABO SCANDIC

Part of Europa Biosite

Produktinformation



Forschungsprodukte & Biochemikalien



Zellkultur & Verbrauchsmaterial



Diagnostik & molekulare Diagnostik



Laborgeräte & Service

Weitere Information auf den folgenden Seiten!
See the following pages for more information!



Lieferung & Zahlungsart

siehe unsere [Liefer- und Versandbedingungen](#)

Zuschläge

- Mindermengenzuschlag
- Trockeneiszuschlag
- Gefahrgutzuschlag
- Expressversand

SZABO-SCANDIC HandelsgmbH

Quellenstraße 110, A-1100 Wien

T. +43(0)1 489 3961-0

F. +43(0)1 489 3961-7

mail@szabo-scandic.com

www.szabo-scandic.com

[linkedin.com/company/szaboscandic](https://www.linkedin.com/company/szaboscandic) 

CD11c antibody

Cat. No. GTX04685

Host	Rabbit
Clonality	Polyclonal
Isotype	IgG
Application	WB, IHC-P, ELISA
Reactivity	Mouse, Rat

Package
100 µg

APPLICATION

Application Note

*Optimal dilutions/concentrations should be determined by the researcher.

Suggested dilution	Recommended dilution
WB	0.25-0.5 µg/mL
IHC-P	2-5 µg/mL
ELISA	0.1-0.5 µg/mL

Not tested in other applications.

Calculated MW 128 kDa. ([Note](#))

PROPERTIES

Form	Liquid
Buffer	4mg Trehalose, 0.9mg NaCl, 0.2mg Na ₂ HPO ₄
Preservative	No preservatives
Storage	Store as concentrated solution. Centrifuge briefly prior to opening vial. For short-term storage (1-2 weeks), store at 4°C. For long-term storage, aliquot and store at -20°C or below. Avoid multiple freeze-thaw cycles.
Concentration	0.5 mg/ml (Please refer to the vial label for the specific concentration.)
Immunogen	E.coli-derived mouse CD11c/Itgax recombinant protein (Position: P140-T342).
Purification	Purified by antigen-affinity chromatography
Conjugation	Unconjugated

Note

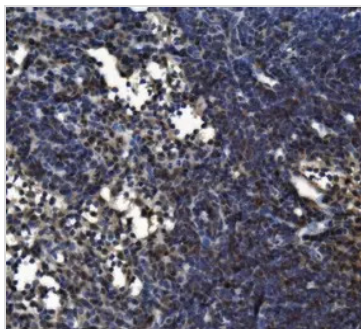
For laboratory research use only. Not for any clinical, therapeutic, or diagnostic use in humans or animals. Not for animal or human consumption.

Purchasers shall not, and agree not to enable third parties to, analyze, copy, reverse engineer or otherwise attempt to determine the structure or sequence of the product.



For full product information, images and publications, please visit our [website](#).

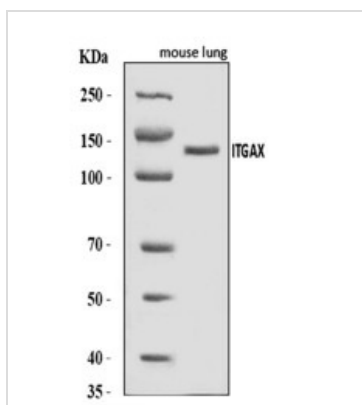
DATA IMAGES

**GTX04685 IHC-P Image**

IHC-P analysis of rat lymph node tissue using GTX04685 CD11c antibody.

Antigen retrieval : Heat mediated EDTA buffer (pH 8.0)

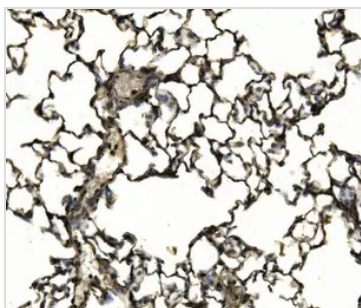
Dilution : 2 µg/mL

**GTX04685 WB Image**

WB analysis of mouse lung tissue lysate using GTX04685 CD11c antibody.

Loading : 30 µg

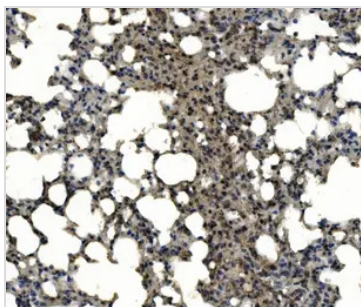
Dilution : 0.5 µg/mL

**GTX04685 IHC-P Image**

IHC-P analysis of rat lung tissue using GTX04685 CD11c antibody.

Antigen retrieval : Heat mediated EDTA buffer (pH 8.0)

Dilution : 2 µg/mL

**GTX04685 IHC-P Image**

IHC-P analysis of mouse lung tissue using GTX04685 CD11c antibody.

Antigen retrieval : Heat mediated EDTA buffer (pH 8.0)

Dilution : 2 µg/mL



For full product information, images and publications, please visit our [website](#).