



SZABO SCANDIC

Part of Europa Biosite

Produktinformation



Forschungsprodukte & Biochemikalien



Zellkultur & Verbrauchsmaterial



Diagnostik & molekulare Diagnostik



Laborgeräte & Service

Weitere Information auf den folgenden Seiten!
See the following pages for more information!



Lieferung & Zahlungsart

siehe unsere [Liefer- und Versandbedingungen](#)

Zuschläge

- Mindermengenzuschlag
- Trockeneiszuschlag
- Gefahrgutzuschlag
- Expressversand

SZABO-SCANDIC HandelsgmbH

Quellenstraße 110, A-1100 Wien

T. +43(0)1 489 3961-0

F. +43(0)1 489 3961-7

mail@szabo-scandic.com

www.szabo-scandic.com

[linkedin.com/company/szaboscandic](https://www.linkedin.com/company/szaboscandic) 

PMP22 antibody [OTI5D1]

Cat. No. GTX04688

Host	Mouse
Clonality	Monoclonal
Isotype	IgG1
Application	WB, IHC-P
Reactivity	Human, Mouse, Rat

Package
100 µl

APPLICATION

Application Note

*Optimal dilutions/concentrations should be determined by the researcher.

Suggested dilution	Recommended dilution
WB	1:500
IHC-P	1:2000

Not tested in other applications.

Calculated MW 18 kDa. ([Note](#))

PROPERTIES

Form	Liquid
Buffer	PBS, 1% BSA, 50% Glycerol
Preservative	0.02% sodium azide
Storage	Store as concentrated solution. Centrifuge briefly prior to opening vial. For short-term storage (1-2 weeks), store at 4°C. For long-term storage, aliquot and store at -20°C or below. Avoid multiple freeze-thaw cycles.
Concentration	1 mg/ml (Please refer to the vial label for the specific concentration.)
Immunogen	Full length human recombinant protein of human PMP22 (NP_000295) produced in HEK293T cell.
Purification	Purified by affinity chromatography
Conjugation	Unconjugated

Note

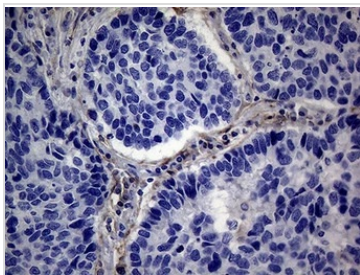
For laboratory research use only. Not for any clinical, therapeutic, or diagnostic use in humans or animals. Not for animal or human consumption.

Purchasers shall not, and agree not to enable third parties to, analyze, copy, reverse engineer or otherwise attempt to determine the structure or sequence of the product.



For full product information, images and publications, please visit our [website](#).

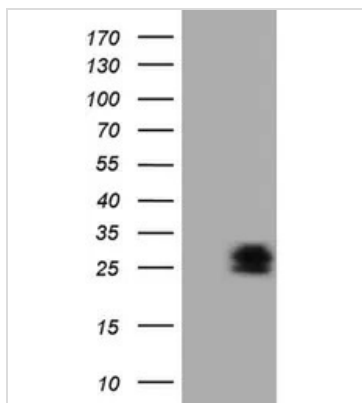
DATA IMAGES

**GTX04688 IHC-P Image**

IHC-P analysis of human lung carcinoma tissue using GTX04688 PMP22 antibody [OTI5D1].

Antigen retrieval : Heat mediated 1mM EDTA in 10mM Tris buffer (pH 8.5)

Dilution : 1:2000

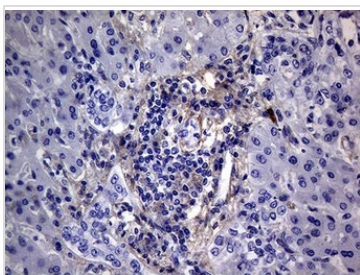
**GTX04688 WB Image**

WB analysis of 293T cells with/without human PMP22 protein transfection using GTX04688 PMP22 antibody [OTI5D1].

Lane 1 : Control vector

Lane 2 : Human PMP22 transfection

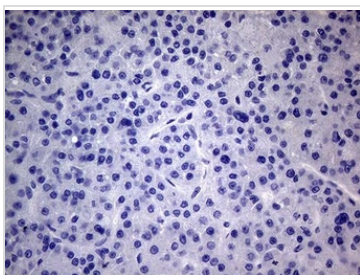
Loading : 5 μ g

**GTX04688 IHC-P Image**

IHC-P analysis of human liver carcinoma tissue using GTX04688 PMP22 antibody [OTI5D1].

Antigen retrieval : Heat mediated 1mM EDTA in 10mM Tris buffer (pH 8.5)

Dilution : 1:2000

**GTX04688 IHC-P Image**

IHC-P analysis of human liver tissue using GTX04688 PMP22 antibody [OTI5D1]. This figure shows negative staining.

Antigen retrieval : Heat mediated 1mM EDTA in 10mM Tris buffer (pH 8.5)

Dilution : 1:2000



For full product information, images and publications, please visit our [website](#).