



SZABO SCANDIC

Part of Europa Biosite

Produktinformation



Forschungsprodukte & Biochemikalien



Zellkultur & Verbrauchsmaterial



Diagnostik & molekulare Diagnostik



Laborgeräte & Service

Weitere Information auf den folgenden Seiten!
See the following pages for more information!



Lieferung & Zahlungsart

siehe unsere [Liefer- und Versandbedingungen](#)

Zuschläge

- Mindermengenzuschlag
- Trockeneiszuschlag
- Gefahrgutzuschlag
- Expressversand

SZABO-SCANDIC HandelsgmbH

Quellenstraße 110, A-1100 Wien

T. +43(0)1 489 3961-0

F. +43(0)1 489 3961-7

mail@szabo-scandic.com

www.szabo-scandic.com

[linkedin.com/company/szaboscandic](https://www.linkedin.com/company/szaboscandic) 

Gasdermin D antibody

Cat. No. GTX04690

Host	Rabbit
Clonality	Polyclonal
Isotype	IgG
Application	WB, ICC/IF, IHC-P
Reactivity	Human, Mouse, Rat

Package
100 µl

APPLICATION

Application Note

*Optimal dilutions/concentrations should be determined by the researcher.

Suggested dilution	Recommended dilution
WB	1:500-1:2000
ICC/IF	1:50-1:200
IHC-P	1:50-1:200

Not tested in other applications.

Calculated MW 53 kDa. ([Note](#))

PROPERTIES

Form	Liquid
Buffer	PBS pH 7.4, 150 mM NaCl, 50% glycerol
Preservative	0.02% sodium azide
Storage	Store as concentrated solution. Centrifuge briefly prior to opening vial. For short-term storage (1-2 weeks), store at 4°C. For long-term storage, aliquot and store at -20°C or below. Avoid multiple freeze-thaw cycles.
Concentration	1 mg/ml (Please refer to the vial label for the specific concentration.)
Immunogen	A synthesized peptide derived from human GSDMD(Accession P57764), corresponding to amino acid residues W50-G100.
Purification	Purified by antigen-affinity chromatography From serum
Conjugation	Unconjugated

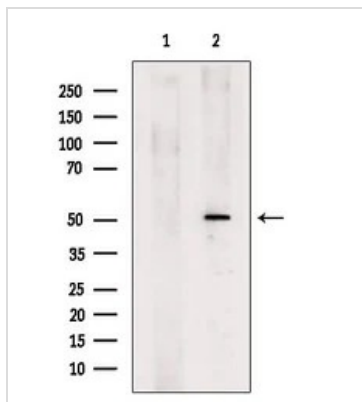
Note For laboratory research use only. Not for any clinical, therapeutic, or diagnostic use in humans or animals. Not for animal or human consumption.

Purchasers shall not, and agree not to enable third parties to, analyze, copy, reverse engineer or otherwise attempt to determine the structure or sequence of the product.



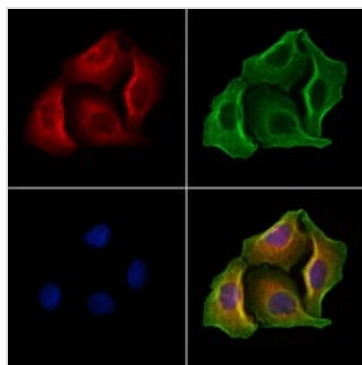
For full product information, images and publications, please visit our [website](#).

DATA IMAGES



GTX04690 WB Image

WB analysis of B16F10 whole cell lysate using GTX04690 Gasdermin D antibody. The lane on the left was treated with blocking peptide.



GTX04690 ICC/IF Image

ICC/IF analysis of PFA-fixed HeLa cells with LPS-treatment using GTX04690 Gasdermin D antibody.

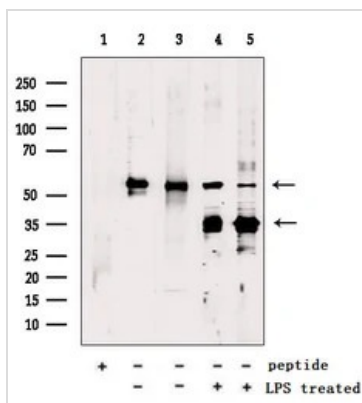
Red : Primary antibody

Green : Beta tubulin

Blue : DAPI

Permeabilization : 0.1% Triton X-100

Dilution : 1:200



GTX04690 WB Image

WB analysis of various samples using GTX04690 Gasdermin D antibody.

Lane 1 : TPA + LPS treated C6 whole cell lysate with blocking peptide

Lane 2 : TPA-treated C6 whole cell lysate

Lane 3 : TPA-treated HepG2 whole cell lysate

Lane 4 : TPA + LPS treated C6 whole cell lysate

Lane 5 : TPA + LPS treated HepG2 whole cell lysate



For full product information, images and publications, please visit our [website](#).