



# SZABO SCANDIC

Part of Europa Biosite

## Produktinformation



Forschungsprodukte & Biochemikalien



Zellkultur & Verbrauchsmaterial



Diagnostik & molekulare Diagnostik



Laborgeräte & Service

Weitere Information auf den folgenden Seiten!  
See the following pages for more information!



### Lieferung & Zahlungsart

siehe unsere [Liefer- und Versandbedingungen](#)

### Zuschläge

- Mindermengenzuschlag
- Trockeneiszuschlag
- Gefahrgutzuschlag
- Expressversand

### SZABO-SCANDIC HandelsgmbH

Quellenstraße 110, A-1100 Wien

T. +43(0)1 489 3961-0

F. +43(0)1 489 3961-7

[mail@szabo-scandic.com](mailto:mail@szabo-scandic.com)

[www.szabo-scandic.com](http://www.szabo-scandic.com)

[linkedin.com/company/szaboscandic](https://www.linkedin.com/company/szaboscandic) 

## CD37 antibody [MB-1] (PE)

Cat. No. GTX04698-08

Host	Mouse
Clonality	Monoclonal
Isotype	IgG1
Application	FACS
Reactivity	Human

Package  
100 test

## APPLICATION

## Application Note

\*Optimal dilutions/concentrations should be determined by the researcher.

Suggested dilution	Recommended dilution
FACS	10 $\mu$ L reagent / 100 $\mu$ L of whole blood or $10^6$ cells in a suspension

Not tested in other applications.

Calculated MW 32 kDa. ([Note](#))

## PROPERTIES

Form	Liquid
Buffer	PBS
Preservative	15 mM sodium azide
Storage	Store as concentrated solution. Centrifuge briefly prior to opening vial. Store at 4°C. DO NOT FREEZE. Protect from light.
Concentration	Batch dependent (Please refer to the vial label for the specific concentration.)
Immunogen	Human lymphomatous lymph node cells
Purification	Purified by size-exclusion chromatography
Conjugation	Phycoerythrin (PE)

## Note

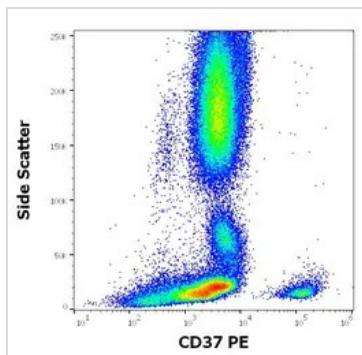
For laboratory research use only. Not for any clinical, therapeutic, or diagnostic use in humans or animals. Not for animal or human consumption.

Purchasers shall not, and agree not to enable third parties to, analyze, copy, reverse engineer or otherwise attempt to determine the structure or sequence of the product.



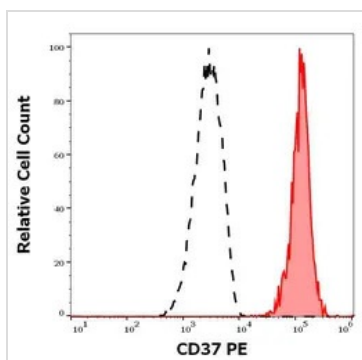
For full product information, images and publications, please visit our [website](#).

DATA IMAGES



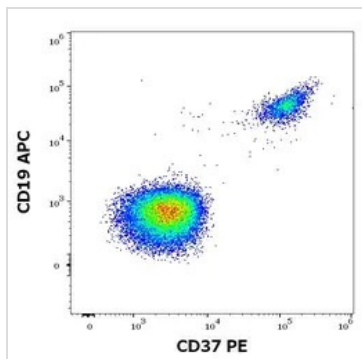
**GTX04698-08 FACS Image**

FACS analysis of human peripheral whole blood cells using GTX04698-08 CD37 antibody [MB-1] (PE).  
Antibody amount : 10  $\mu$ L reagent / 100  $\mu$ L of peripheral whole blood



**GTX04698-08 FACS Image**

FACS analysis of human CD37 positive lymphocytes separated from human peripheral whole blood cells using GTX04698-08 CD37 antibody [MB-1] (PE).  
Red-filled : CD37 positive  
Black-dashed : CD37 negative  
Dilution : 10  $\mu$ L reagent / 100  $\mu$ L of peripheral whole blood



**GTX04698-08 FACS Image**

FACS analysis of human lymphocytes using GTX04698-08 CD37 antibody [MB-1] (PE) and GTX18224 CD19 antibody [LT19] (APC).  
Antibody amount : 10  $\mu$ L reagent / 100  $\mu$ L of peripheral whole blood



For full product information, images and publications, please visit our [website](#).