



SZABO SCANDIC

Part of Europa Biosite

Produktinformation



Forschungsprodukte & Biochemikalien



Zellkultur & Verbrauchsmaterial



Diagnostik & molekulare Diagnostik



Laborgeräte & Service

Weitere Information auf den folgenden Seiten!
See the following pages for more information!



Lieferung & Zahlungsart

siehe unsere [Liefer- und Versandbedingungen](#)

Zuschläge

- Mindermengenzuschlag
- Trockeneiszuschlag
- Gefahrgutzuschlag
- Expressversand

SZABO-SCANDIC HandelsgmbH

Quellenstraße 110, A-1100 Wien

T. +43(0)1 489 3961-0

F. +43(0)1 489 3961-7

mail@szabo-scandic.com

www.szabo-scandic.com

[linkedin.com/company/szaboscandic](https://www.linkedin.com/company/szaboscandic) 

GM130 antibody [4G3]

Cat. No. GTX04700

Host	Mouse
Clonality	Monoclonal
Isotype	IgG2b
Application	WB, ICC/IF, IHC-P, FACS
Reactivity	Human

Package
100 µg

APPLICATION

Application Note

*Optimal dilutions/concentrations should be determined by the researcher.

Suggested dilution	Recommended dilution
WB	0.1-0.5 µg/mL
ICC/IF	5 µg/mL
IHC-P	0.5-1 µg/mL
FACS	1-3 µg/10 ⁶ cells

Not tested in other applications.

Calculated MW 113 kDa. ([Note](#))

PROPERTIES

Form	Liquid
Buffer	4 mg Trehalose, 0.9 mg NaCl, 0.2 mg Na ₂ HPO ₄
Preservative	0.05 mg sodium azide
Storage	Store as concentrated solution. Centrifuge briefly prior to opening vial. For short-term storage (1-2 weeks), store at 4°C. For long-term storage, aliquot and store at -20°C or below. Avoid multiple freeze-thaw cycles.
Concentration	0.5 mg/ml (Please refer to the vial label for the specific concentration.)
Immunogen	E.coli-derived human GM130 recombinant protein (Position: E796-E913).
Purification	Purified by antigen-affinity chromatography
Conjugation	Unconjugated

Note

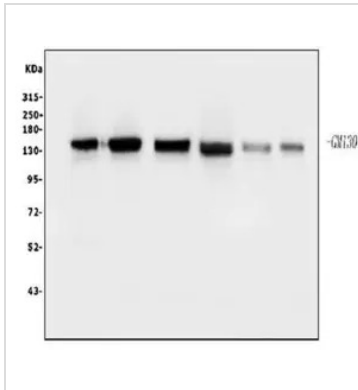
For laboratory research use only. Not for any clinical, therapeutic, or diagnostic use in humans or animals. Not for animal or human consumption.

Purchasers shall not, and agree not to enable third parties to, analyze, copy, reverse engineer or otherwise attempt to determine the structure or sequence of the product.



For full product information, images and publications, please visit our [website](#).

DATA IMAGES

**GTX04700 WB Image**

WB analysis of various samples using GTX04700 GM130 antibody [4G3].

Lane 1 : Human placenta tissue lysate

Lane 2 : K562 whole cell lysate

Lane 3 : Caco-2 whole cell lysate

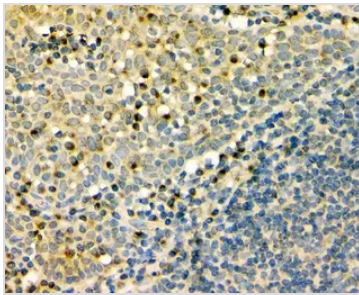
Lane 4 : A549 whole cell lysate

Lane 5 : A431 whole cell lysate

Lane 6 : HEK293 whole cell lysate

Loading : 50 µg

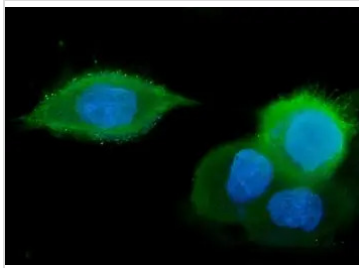
Dilution : 0.5 µg/mL

**GTX04700 IHC-P Image**

IHC-P analysis of human tonsil tissue using GTX04700 GM130 antibody [4G3].

Antigen retrieval : Heat mediated EDTA buffer (pH 8.0)

Dilution : 1 µg/mL

**GTX04700 ICC/IF Image**

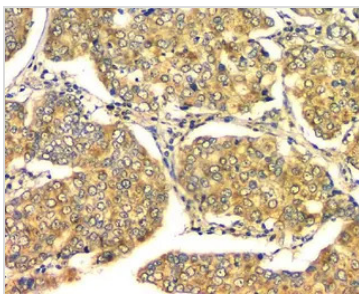
ICC/IF analysis of A431 cells using GTX04700 GM130 antibody [4G3].

Antigen retrieval : Enzyme antigen retrieval was performed.

Green : Primary antibody

Blue : DAPI

Dilution : 5 µg/mL

**GTX04700 IHC-P Image**

IHC-P analysis of human mammary cancer tissue using GTX04700 GM130 antibody [4G3].

Antigen retrieval : Heat mediated EDTA buffer (pH 8.0)

Dilution : 1 µg/mL



For full product information, images and publications, please visit our [website](#).